



Goal 1: World Class Education

Goal Council Meeting

October 2, 2017

Results Washington Updates





1.3.a Increase percentage of eligible students who sign up for College Bound

Rachelle Sharpe, Deputy Executive Director

Sarah Weiss, Associate Director

Michelle Alejano, WCAN Director

Debbie Carlman, Bethel School District

October 2, 2017

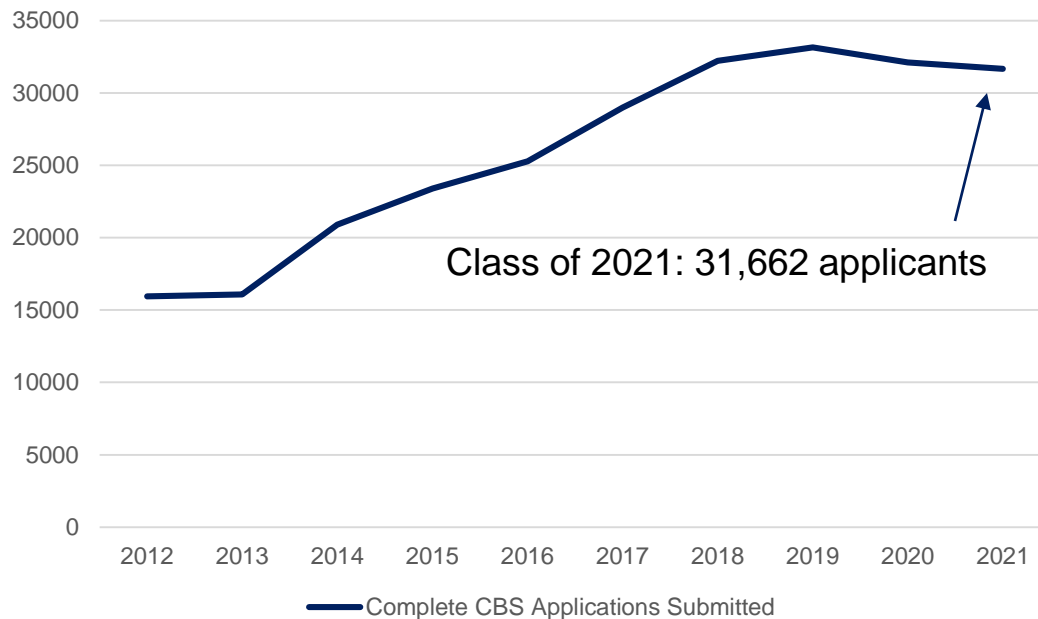


Background:



College Bound is an early commitment of financial aid to middle school students from low-income families.

Complete CBS Applications Submitted

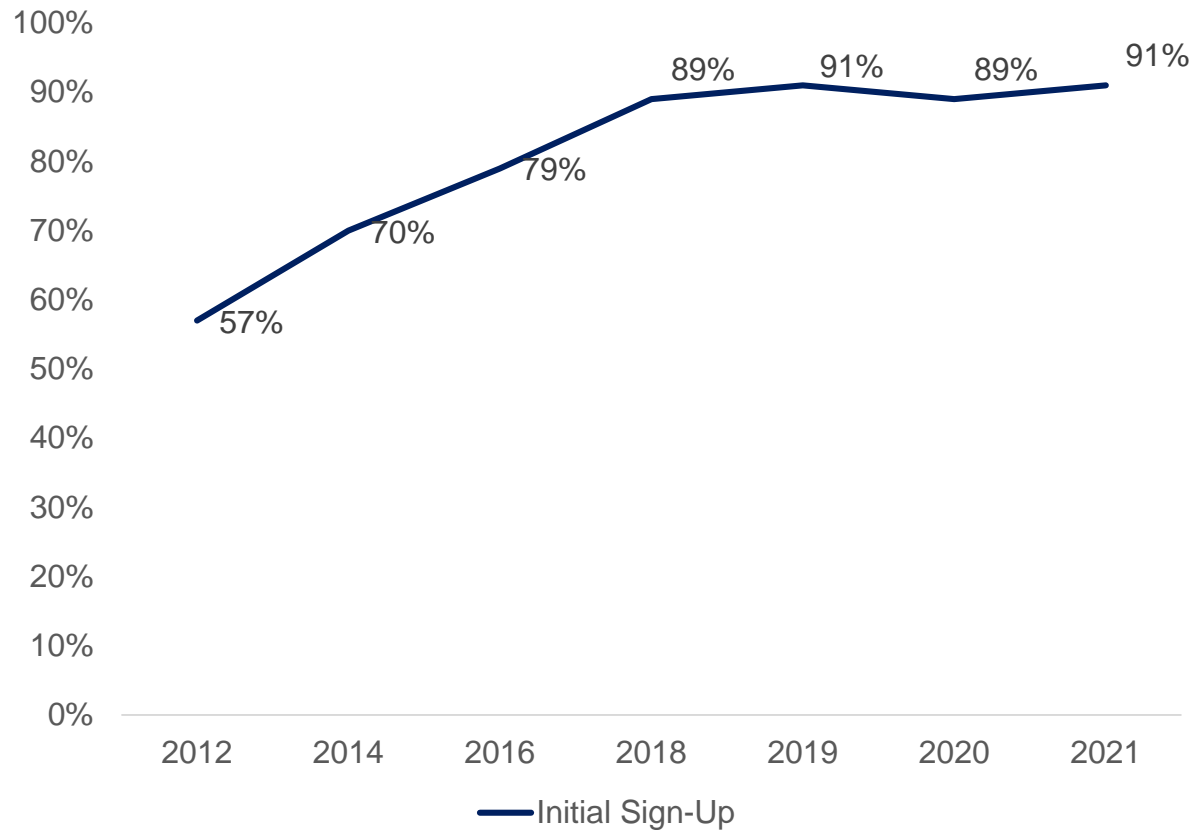


Students pledge to:

- Graduate high school with at least a 2.0 GPA
- Stay crime free
- Prepare for and get admitted to college
- Apply for financial aid in a timely manner

Over 250,000 students have applied for College Bound.

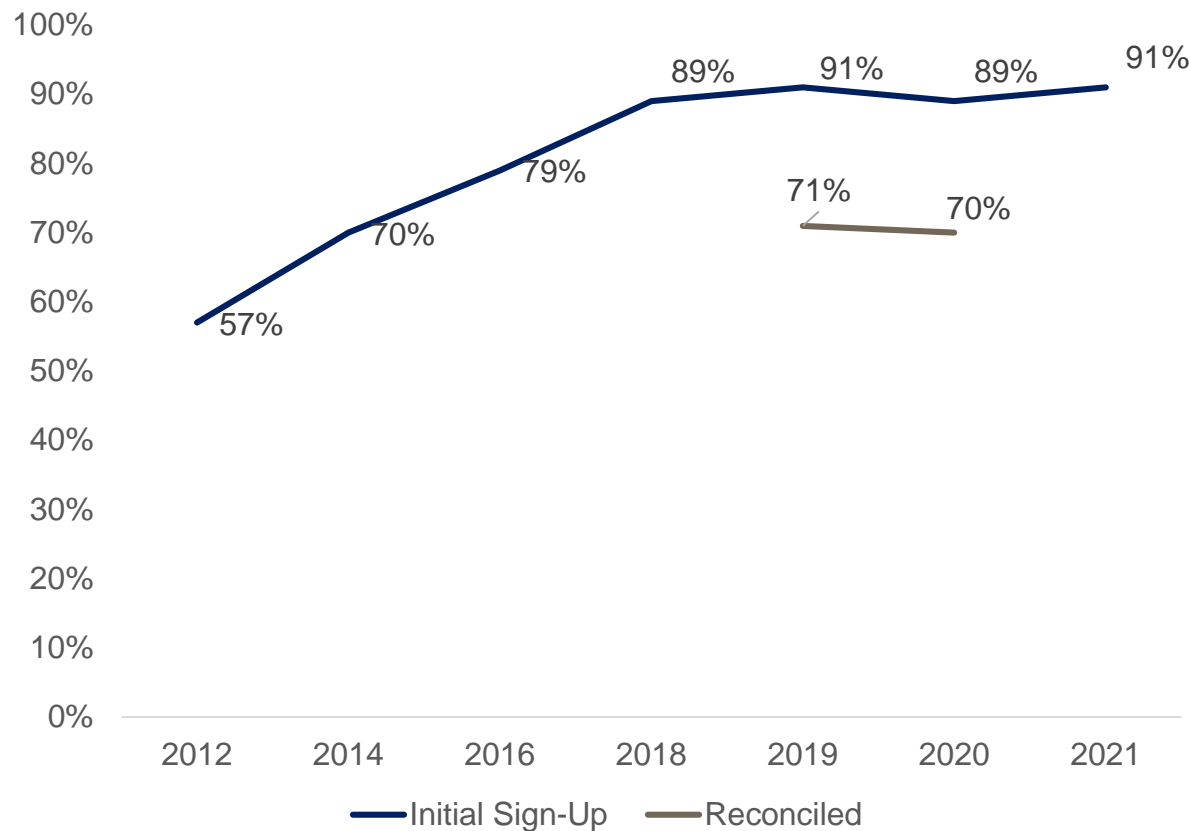
Current State: Reconciliation method demonstrates a wider gap in participation.



- Applications have increased over time

Source: WSAC administrative data, OSPI analysis of CBS applicants.

Current State: Reconciliation method demonstrates a wider gap in participation.

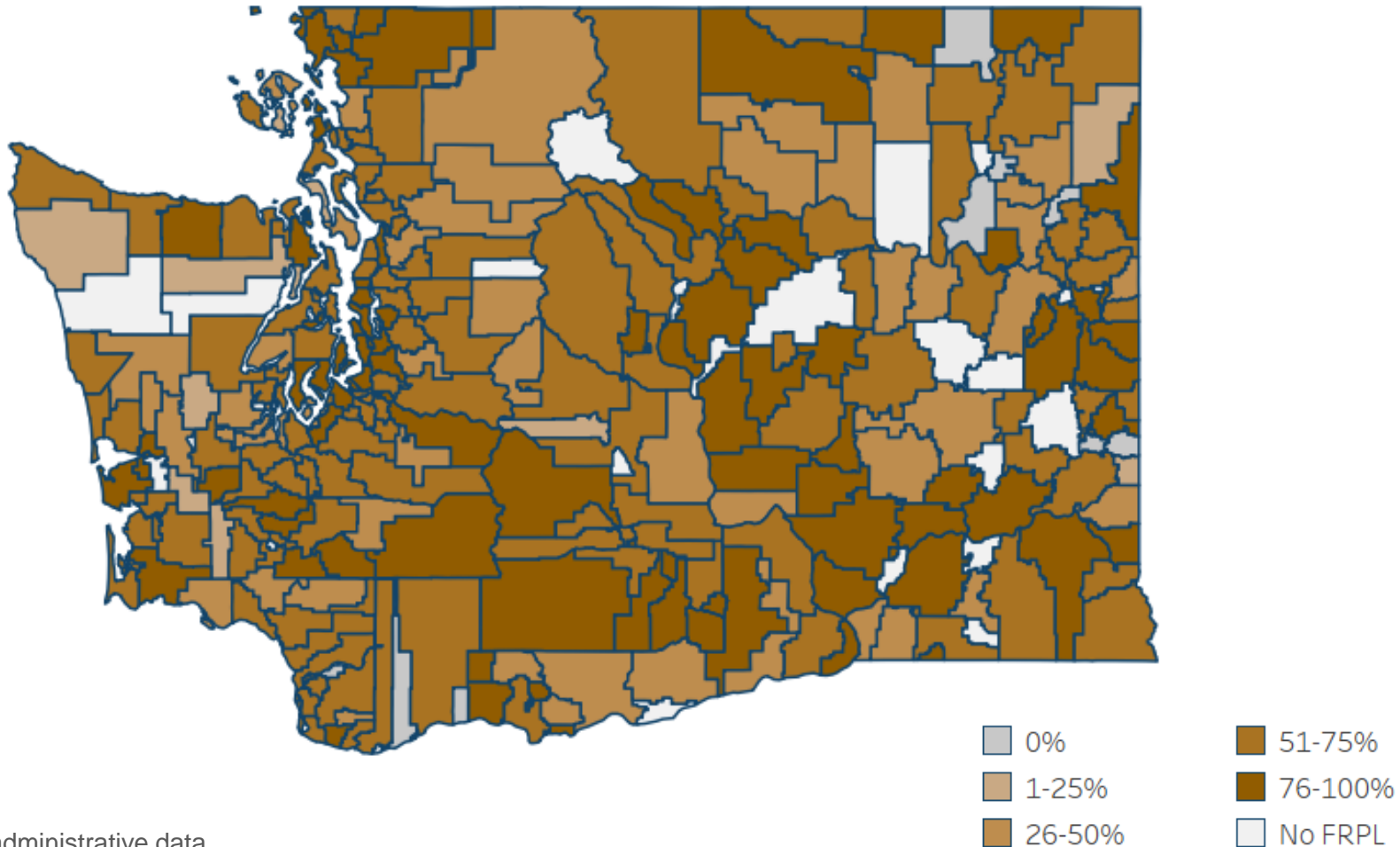


- Applications have increased over time
- Reconciled rates capture increases in the number of eligible students and describe the gap more accurately

Source: WSAC administrative data, OSPI analysis of CBS applicants.

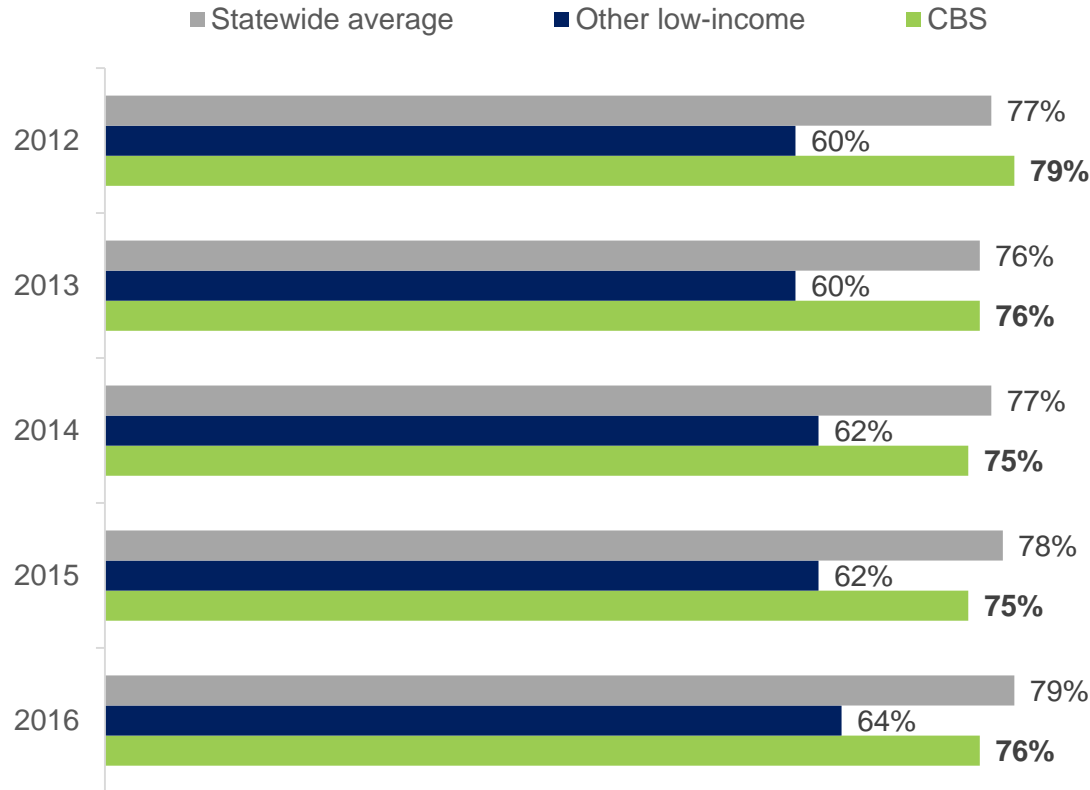
Current State: Sign-ups are strong and consistent statewide.

Reconciled Rate, 2020



Source: WSAC administrative data

Opportunity: College Bound can address dropout prevention as well as postsecondary access and success.



Graduation rates
for CBS students
are 10% higher
than non-CBS
low-income peers

Source: OSPI staff analysis of WSAC CBS applicant data.

Current State: Postsecondary enrollment and persistence rates are above average.

Enrollments

- CB scholars enrolling at higher rates than statewide (64% compared to 61% in 2014)
- Rate of immediate enrollment decreased as the size of the cohort grew
- Of those who enroll, 92% did so immediately
- 47% attend four-year institutions

Persistence

- 1st to 2nd year of college was 74% (2015 to 2016) compared to 70% nationally
- 74% of scholars had HS GPA above 2.5

Income Eligibility

- 85% were income eligible upon enrollment
 - Of those, 65% of costs were covered with non-loan aid
- Caseload Forecast Council projects 20,885 income eligible enrollments in 2019

Opportunity: College Bound high school survey results address need for improved information and awareness.

Students who
believe they qualify
take action

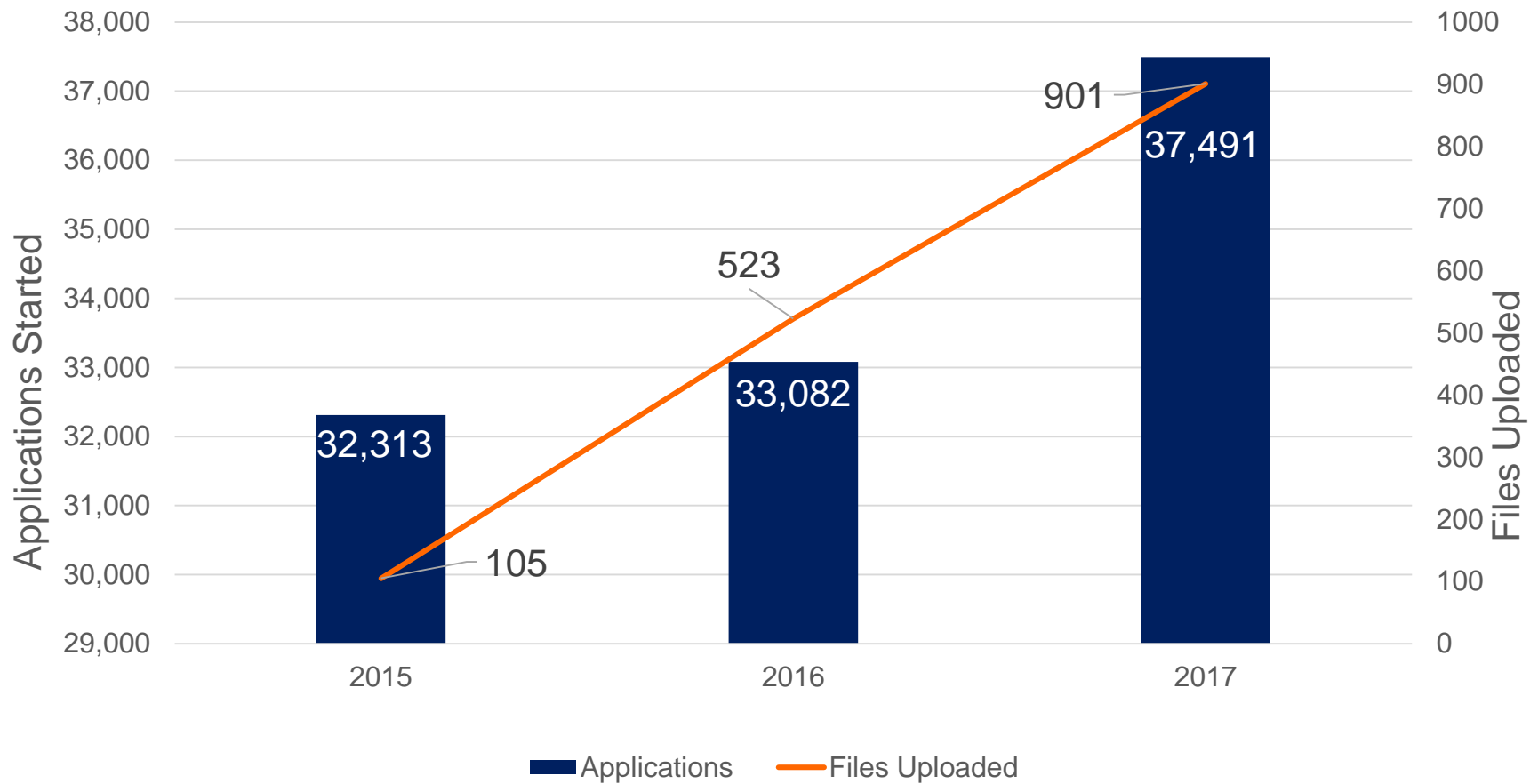
35% do not plan to
enroll immediately –
the majority to earn
money

Most receive
encouragement from
an adult &
participated in
college preparatory

College preparatory
activities lead to
increased
understanding of
program

Students suggest
expanded
information &
supports

Opportunity: Increase automatic file uploads of eligible students.



Source: WSAC administrative data

Strategy: Frequent application entry/uploads at the district level and application tracking through the MS Toolbox.



Debbie Carlman

Director, Equity and Achievement

Bethel School District

Strategy: Expanded information and awareness activities.

12th Year Campaign



- FAFSA/WASFA completion
- Free training, materials and resources
- Event support

Key Partners

- 10 joint workshops with OSPI and WCAN
- New statewide and regional initiatives

College Bound Repledge Campaign

WANT TO GO TO COLLEGE?

There are many college options to help you prepare for your future career: technical colleges, 2-year colleges and 4-year colleges, both public and private.

Need help with our terms? See our **glossary** in the back of this booklet.

HERE'S WHAT YOU NEED TO KNOW.

IN THIS EDITION:

ALL ABOUT:

THE COLLEGE BOUND SCHOLARSHIP.....1

THE PLEDGE:

FOR THE COLLEGE BOUND SCHOLARSHIP.....3

HIGH SCHOOL CHOICES:

PICKING THE RIGHT CLASSES FOR COLLEGE.....5

PAYING FOR COLLEGE:

TYPES OF FINANCIAL AID, QUALIFYING & PAYING.....7

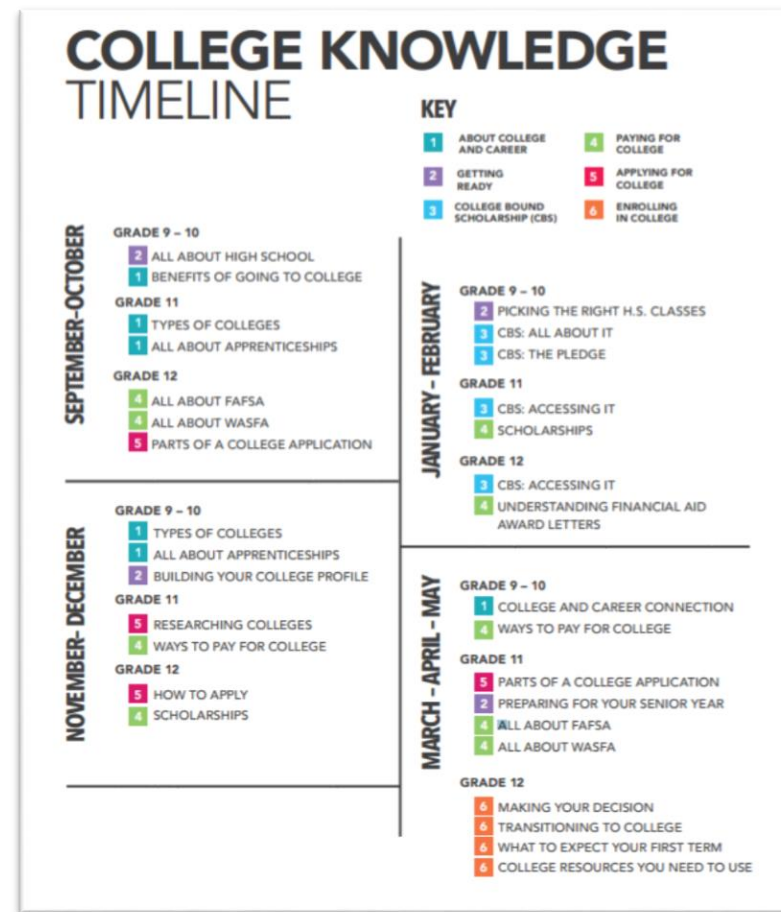
GLOSSARY.....9

ENGAGE EARLY

- Identified 9th grade CBS students
- Developed materials **FOR** students, **WITH** students
- Provided plug-n-play materials to schools
- 146 schools participated
- 17,000 students served

The College Knowledge Project

- Focus groups and surveys of over 800 primarily College Bound Scholarship students from urban, suburban and rural communities.
- 23 digital handouts, covering the most requested college readiness topics.
- Available in the top 5 languages spoken at home by students: English, Russian, Somali, Spanish and Vietnamese. Will be (ADA) accessible.
- Student tested; student approved.



Detailed Action Plan:

Task	Task Lead	Partners	Expected Outcome	Status	Due Date
Increase usage of WSAC portal for upload and application tracking	WSAC	WCAN, regional nonprofits, and districts	Increase in applications started and ultimately completed applications	Started in 2016-17 academic year	Ongoing
Increase resources and ability for districts to monitor their own current CBS sign-up rate	WSAC	WCAN, regional nonprofits, and districts	Increase in completed applications	Started in 2017-18 academic year	Ongoing
New resources for both middle school and high school practitioners working with CBS students	WSAC	WCAN, regional nonprofits	Increase in completed CBS applications and students enrolling directly in college	Started in 2016-17 academic year	Revised annually
Increase understanding of program requirements and postsecondary preparation activities	WSAC	WCAN, regional nonprofits, and districts	More informed students and families and impact of scholarship	Started in 2016-17 academic year	Ongoing

Assistance Needed:

Ensure the College Bound Scholarship is used to its fullest potential to reach the state's educational goals.

Coordinate and enhance student support services for underserved and underrepresented students.

Bonus Discussion: Arts Commission





Washington State Arts Commission

Arts In Education

Update to the World Class Education Goal Council

Lisa Jaret
October 2, 2017

ArtsWA – Quick Facts

- State agency established 1961
- FY18 State Funding: \$1.5M
- FY18 Federal Funding: \$850K
- Key Programs Include
 - Art in Public Places
 - Arts in Education
 - Grants to Organizations
 - Special Initiatives



Arts in Education

- Program Budget: \$480,000
 - Cuts over past decade = 45%
- Core Goals
 - Arts in K-12 Basic Education
 - Arts Orgs + Schools
 - Equity and Access
- Key Initiatives
 - Arts in Education Grants
 - Teaching Artist programs
 - Poetry Out Loud



Vashon Artists In Schools
1st-3rd graders weave in Basketry residency
with Barbara Gustafson



**What do students learn
when they learn in and
through the arts?**

What did YOU learn?



SEATTLE YOUTH SYMPHONY
2015 Grantee



Studio Thinking:

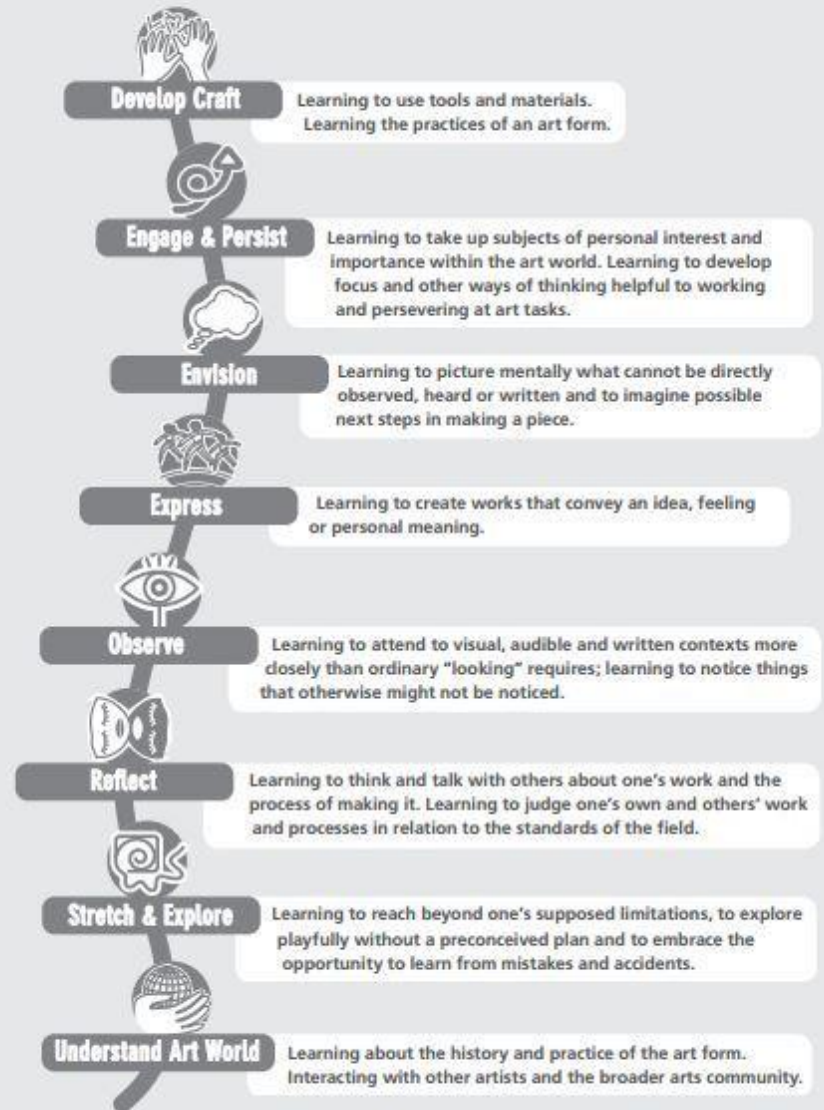
The Real Benefits of Visual Arts Education

by Lois Hetland, Ellen Winner, et.al

Artist Habits of Mind

- Develop Craft
- Engage & Persist
- Envision
- Express
- Observe
- Reflect
- Stretch & Explore
- Understand Art World

Artist Habits of Mind

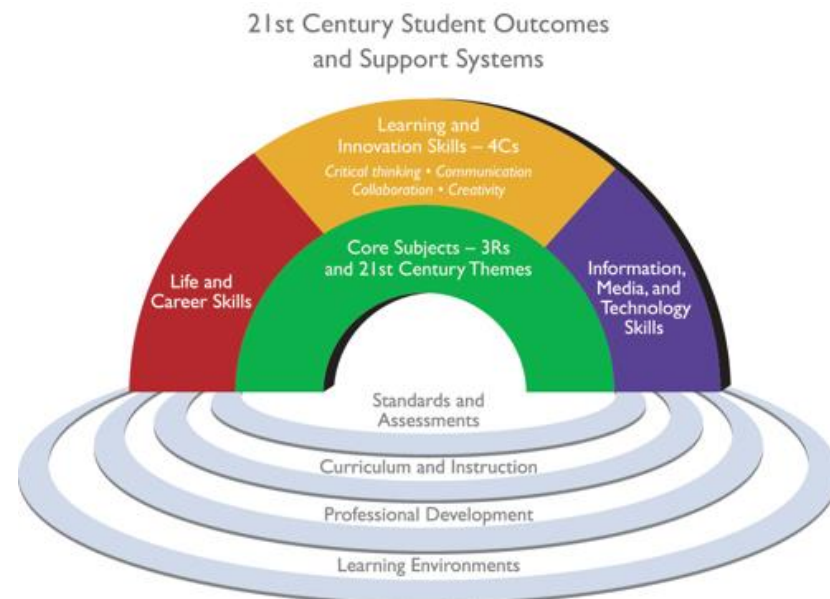


Partnership for 21st Century Skills

Excerpted from www.p21.org

Learning and Innovation Skills: “*The 4Cs*”

- **Creativity** and Innovation
- **Critical Thinking** and Problem Solving
- **Communication** and
- **Collaboration**



TATLAB

— WASHINGTON STATE —
TEACHING ARTIST TRAINING LAB

PD for teaching artists from across the state, in all artistic disciplines, with a focus on:

- Instructional Design
- Arts standards plus 21st Century Skills, Habits of Mind
- Social Justice, Access, and Equity

“TAT Lab has given me clarity around the importance of what I teach and helped me to enrich my lessons with a broader range of skill building than I was using before. “

- TAT Lab Participant, 2017



TEACHING ARTIST TRAINING LAB



Washington State TAT Lab in South Korea!

July 21 – August 5, 2017







- The TAT Lab team led two 2.5-day workshops
- We worked with a total of 53 teaching artists who came from all over South Korea; these teaching artists work in all artistic disciplines, and work both in and out of K-12 schools

Arts Education and ESSA

Opportunity Gap

Arts Integration approaches provide multiple pathways for learning and minimize gaps.

Attendance & Graduation Rates

The Arts positively impact school climate and culture, and student and family engagement.

Whole Child Education

The Arts support SEL, and help students make meaningful connections with all content areas.





DISCOVER DANCE
Pacific Northwest Ballet

Any Questions??

Bonus Discussion: Commission on African American Affairs





Upcoming Meetings

Date	Time	Measure Discussion	Attendance
Oct. 25, 2017	10:30-12:00pm	Goal 4: Healthy & Safe Communities Topic: Opioid overdose deaths (DOH)	Optional
Nov. 6, 2017	1:00-2:30pm	Goal Council Meeting Topic: Results Washington, online learning in 2-year, 4-year colleges	Required
Nov. 27, 2017	1:00-3:00pm	All Goal Council Meeting at the Executive Residence	Required
Dec. 4, 2017	1:00-2:30pm	Goal Council Meeting Topic: Results Washington	Required