



## 1.2.h, i: Supplemental - High School Outcomes



1.2.h: Increase percentage of high school graduates who during the 3rd quarter after graduation are either enrolled in post-secondary education or training or are employed in Washington

1.2.i: Increase the percentage of 9th graders who after 5 years are either employed in Washington or enrolled in post secondary education or training during the third quarter

---

### Workforce Training and Education Coordinating Board

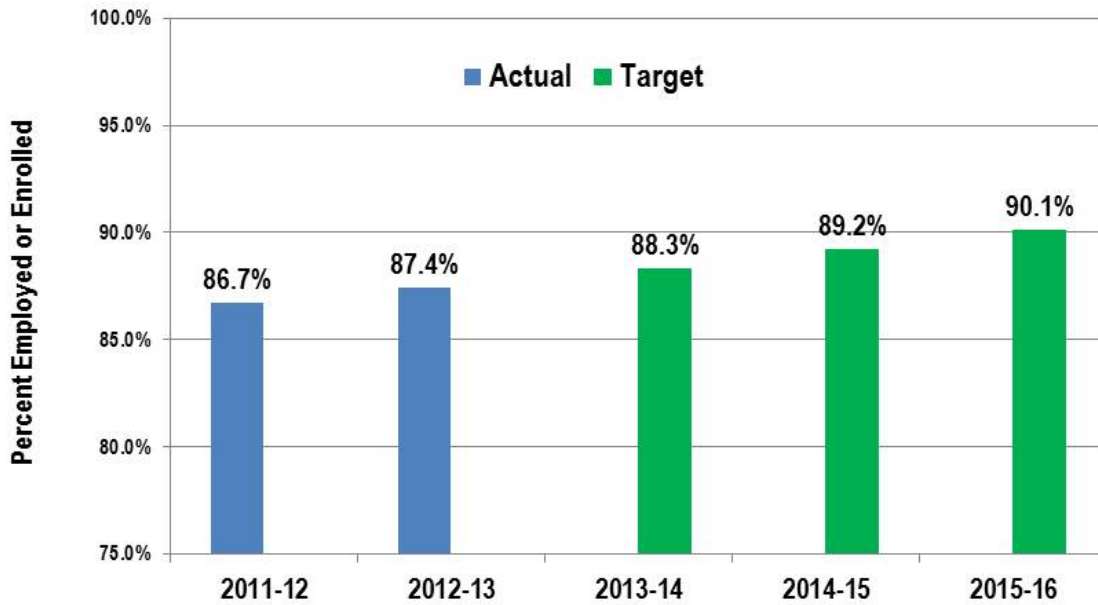
**Eleni Papadakis, Executive Director**

**Dave Wallace, Research Manager**

**April 4, 2016**

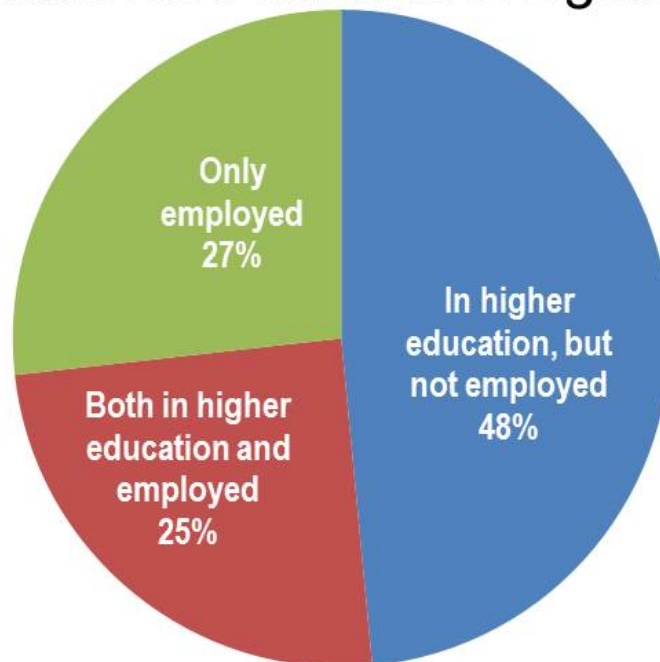


## Percentage of WA high school grads enrolled in postsecondary education & training or employed



Source: Education Research and Data Center

**Current state:** Most of the “engaged” 2011-2012 graduating class were enrolled in higher education



Source: Education Research and Data Center

**1.2.h: Percentage of WA high school grads enrolled in postsecondary education & training or employed to 90.1% for the 2015-16 graduating class**

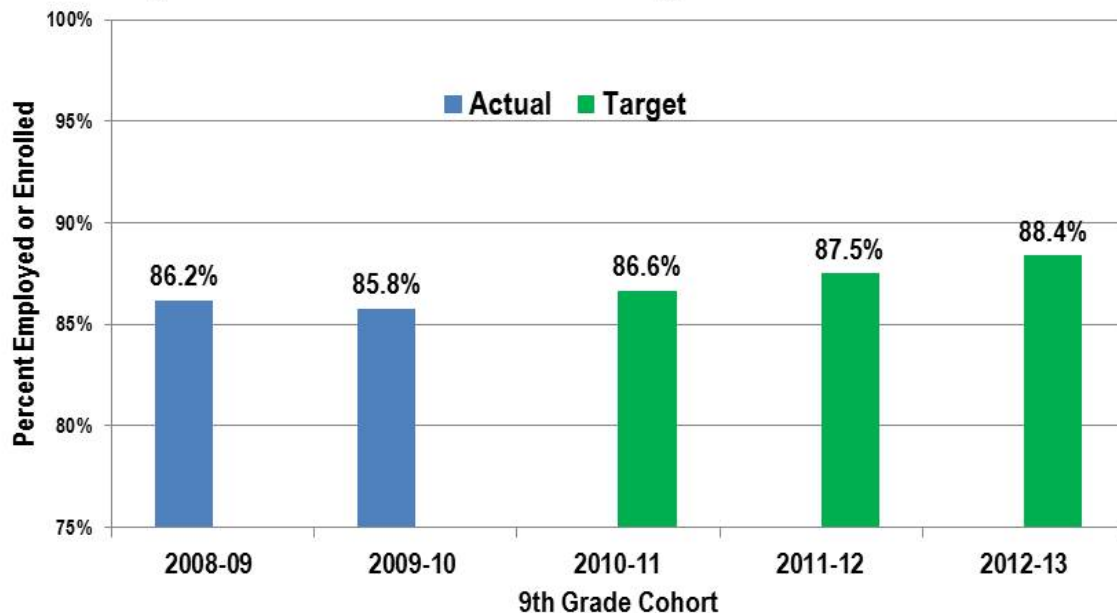
2012-13 High School Graduates		Enrolled in Postsecondary Education or Employed in WA, January - March 2014		
Student Characteristics	Share of students in Category	Share of students in Category		
		Female	Male	Total
All students	100%	89%	85%	87%
<b>Race/Ethnicity</b>				
American Indian and Alaska Native	1%	75%	77%	76%
Asian	8%	95%	92%	94%
Black or African-American	4%	91%	86%	89%
Hispanic	15%	86%	85%	85%
Native Hawaiian or Other Pacific Islander	<1%	89%	83%	86%
Two or more races	5%	89%	86%	88%
White	65%	89%	85%	87%
<b>Income</b>				
Low-Income	37%	86%	82%	84%
Not Low-Income	63%	91%	87%	89%
English Language Learners	2%	85%	84%	85%
Special Education	9%	72%	73%	73%

Source: Education Research and Data Center

4

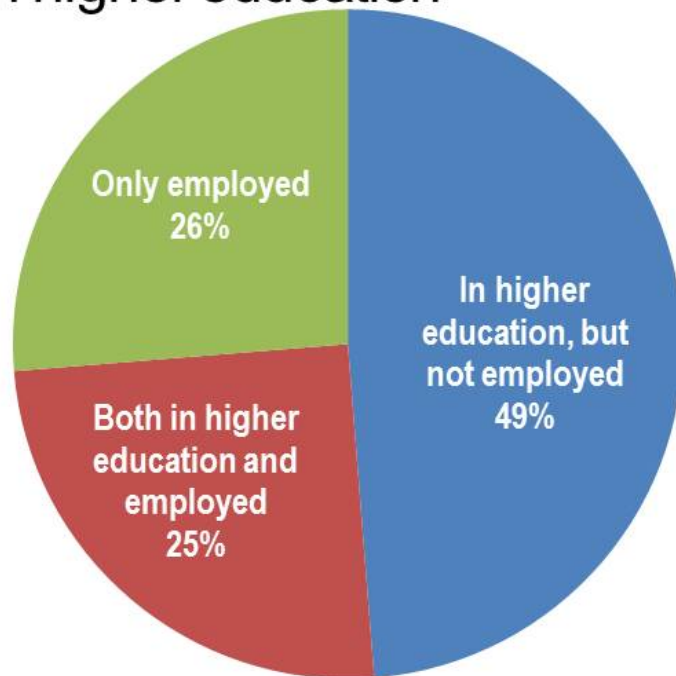
**1.2.i: Percentage of 9<sup>th</sup> graders enrolled in postsecondary education & training or employed to 88.4% for the 2012-13 class**

Percentage of 9<sup>th</sup> graders who after 5 years are either employed in Washington or enrolled in post-secondary education or training



Source: Education Research and Data Center

## Most of the 2008-2009 “engaged” cohort were enrolled in higher education



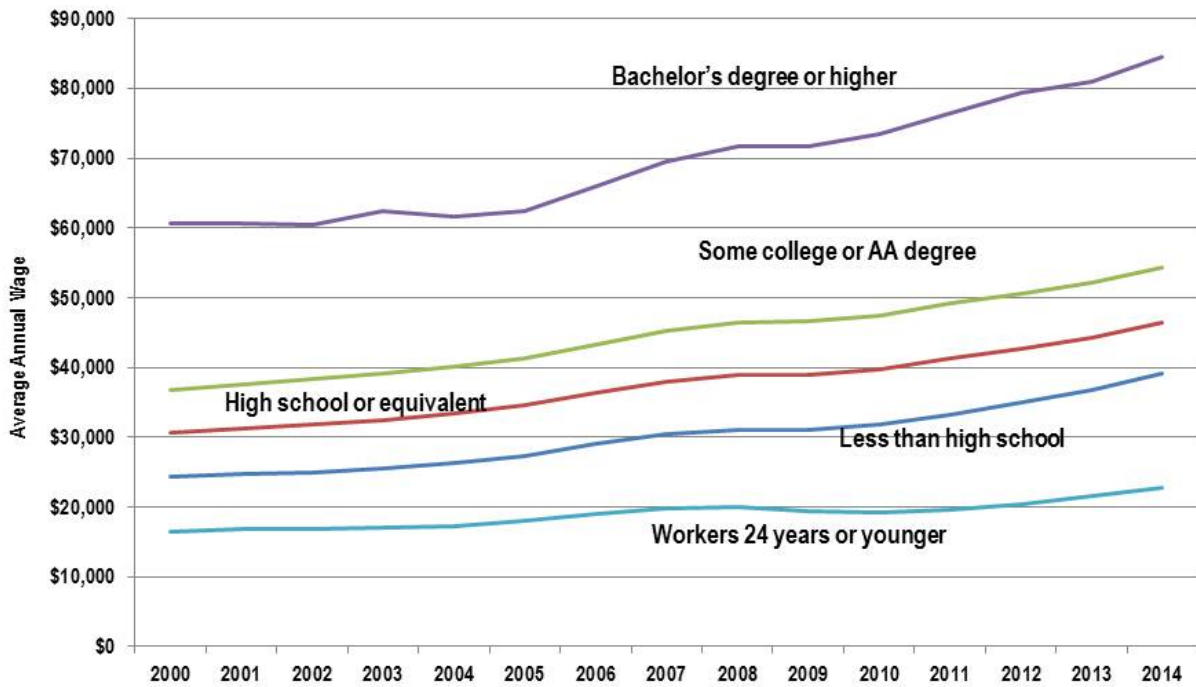
Source: Education Research and Data Center

2009-10 Ninth Graders	Share of students in Category	Enrolled in Postsecondary Education or Employed in WA, January - March 2014		
		Female	Male	Total
<b>All students</b>	<b>100%</b>	<b>88%</b>	<b>84%</b>	<b>86%</b>
<b>Race/Ethnicity</b>				
American Indian and Alaska Native	2%	69%	69%	69%
Asian	7%	94%	92%	93%
Black or African-American	5%	89%	84%	87%
Hispanic	16%	84%	83%	84%
Native Hawaiian or Other Pacific Islander	1%	83%	85%	84%
Two or more races	5%	87%	84%	86%
White	64%	88%	83%	86%
<b>Income</b>				
Low-Income	49%	83%	78%	81%
Not Low-Income	51%	92%	87%	90%
English Language Learners	5%	83%	83%	83%
Special Education	12%	74%	71%	72%

Source: Education Research Data Center

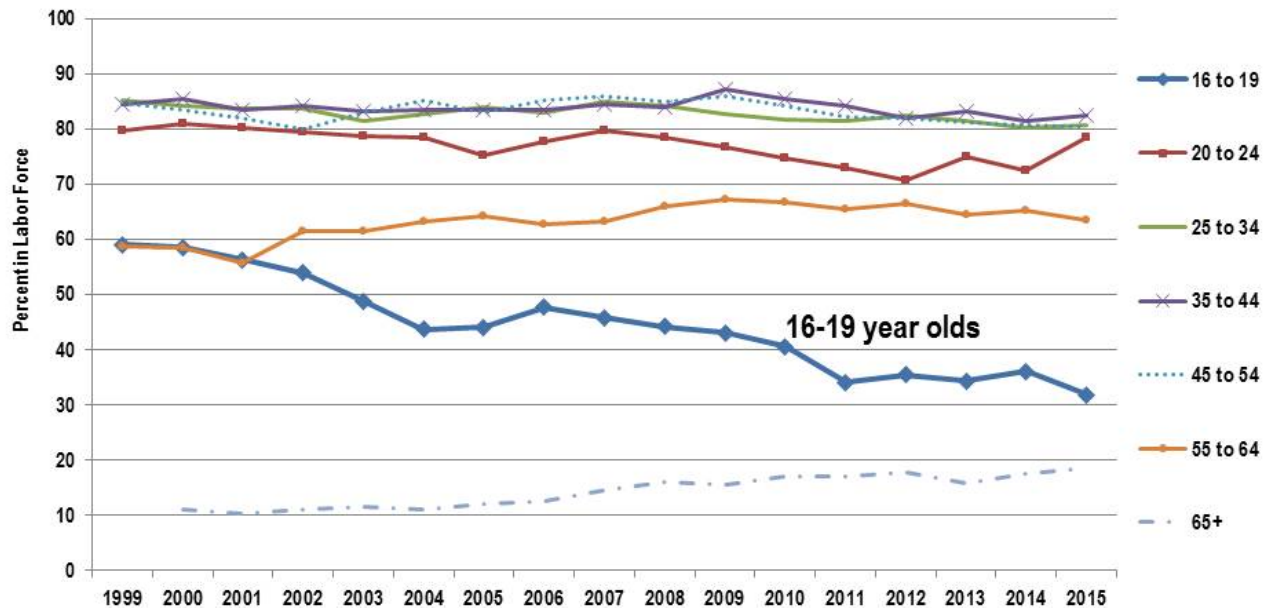


## Challenges: Educations pays, being young doesn't



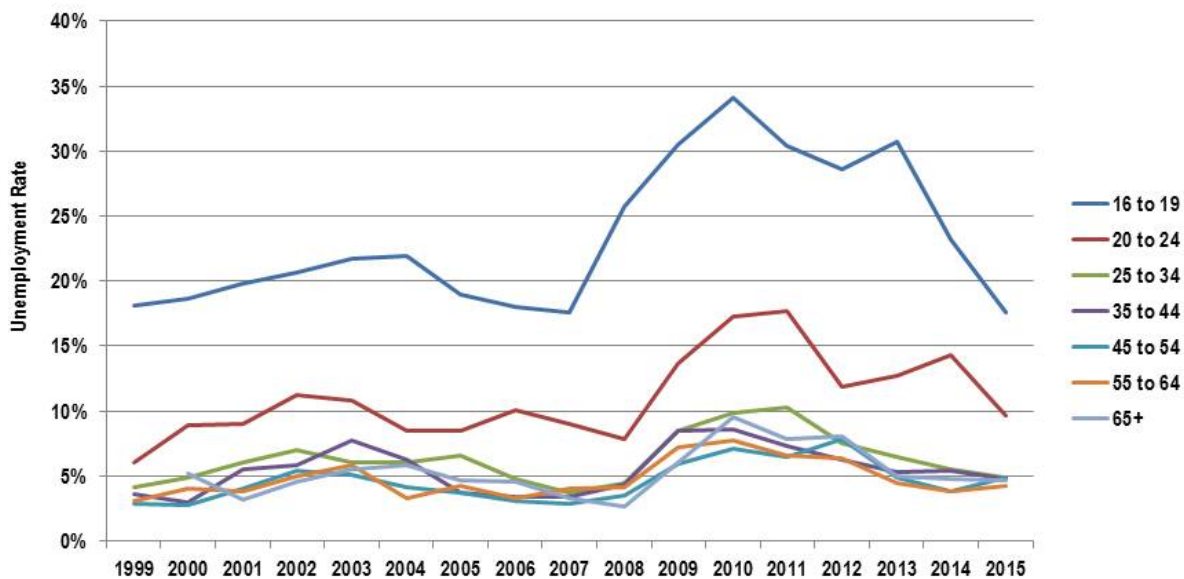
Source: Bureau of the Census, LEHD

## Labor force participation rates falling for younger workers, older workers picking up slack



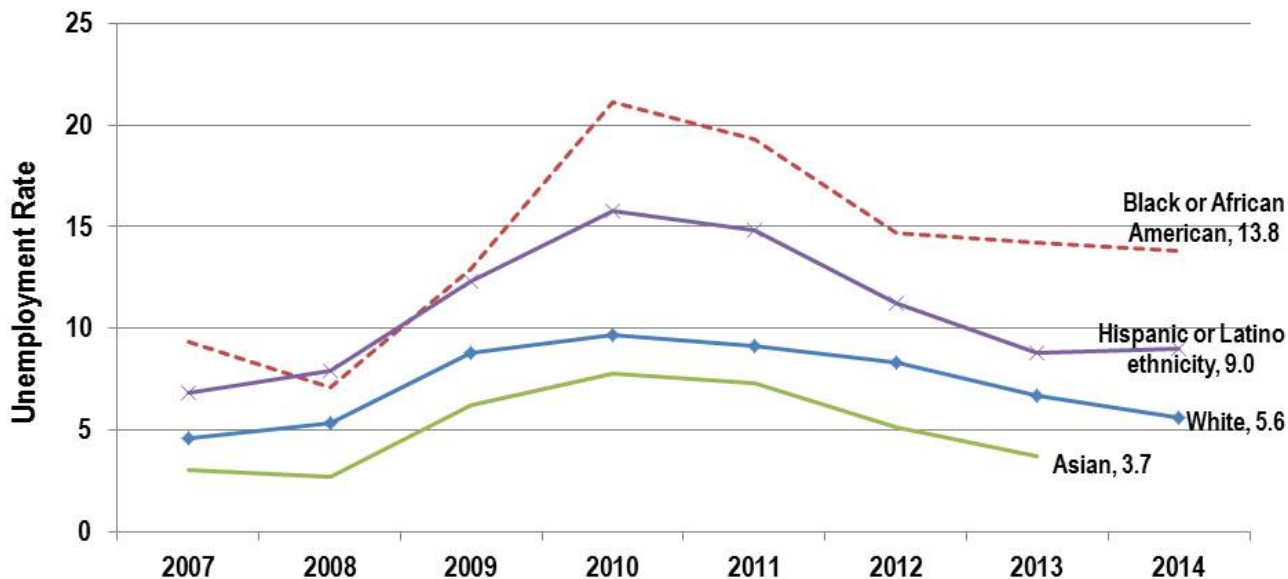
Source: U.S. Bureau of Labor Statistics

## Younger cohorts had much higher unemployment rates, especially during the recession



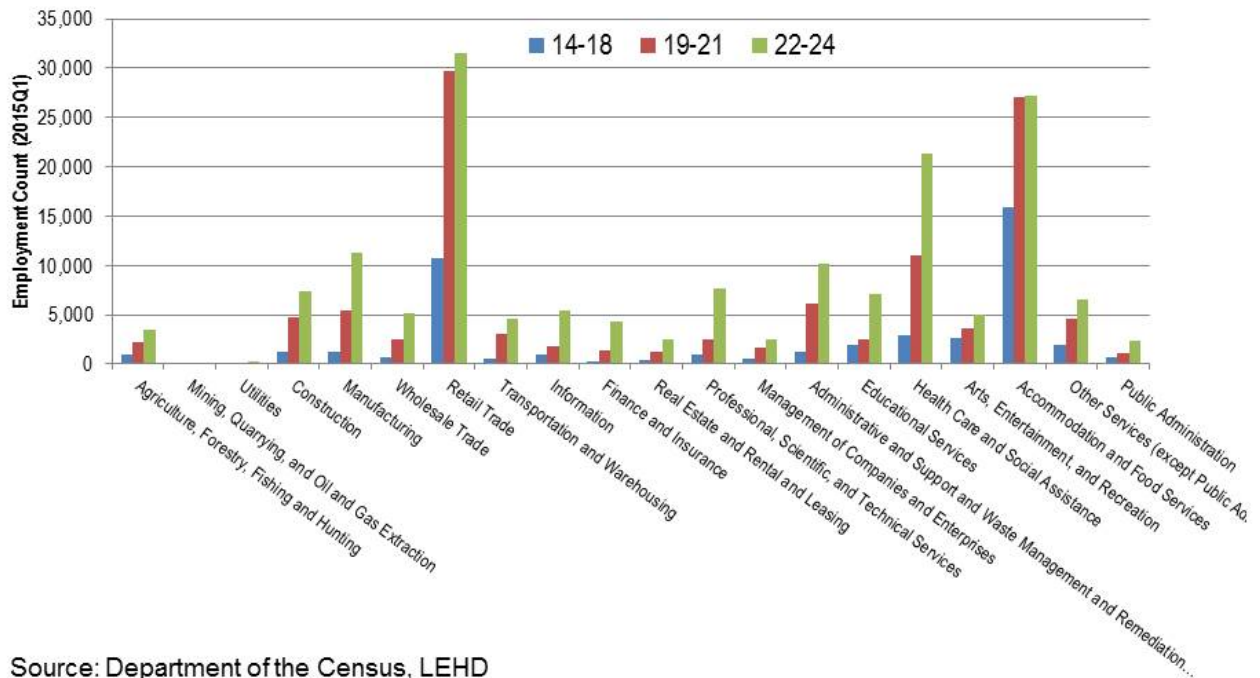
Source: U.S. Bureau of Labor Statistics

## African Americans had highest unemployment rates during the recession and have recovered slowly



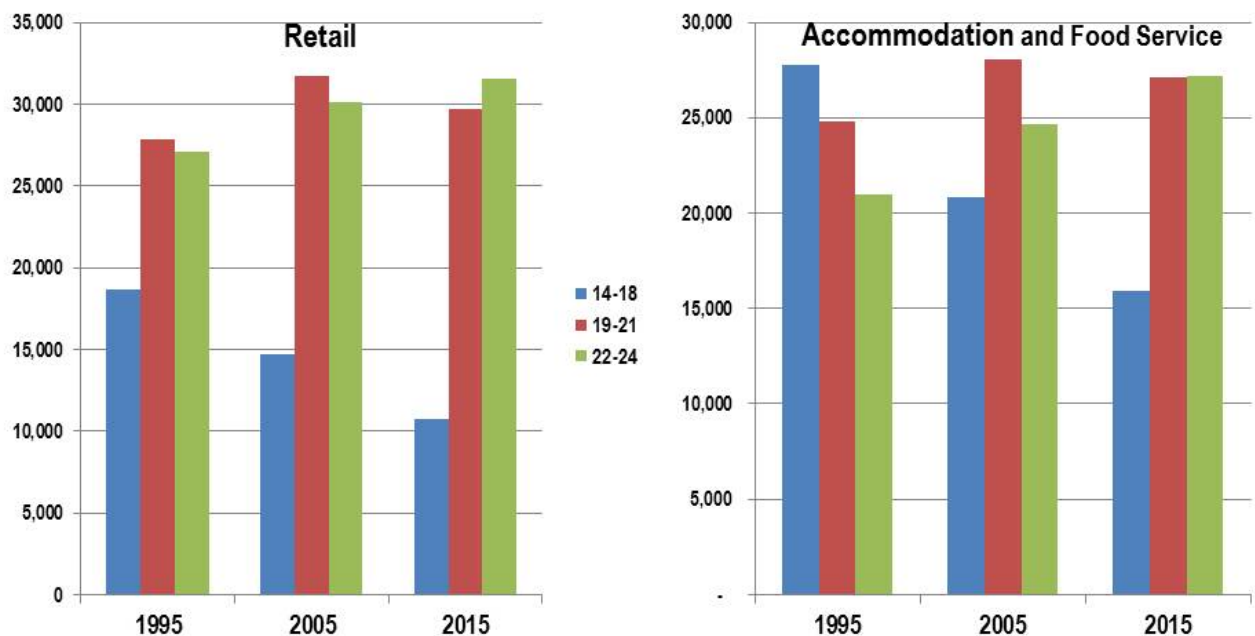
Source: U.S. Bureau of Labor Statistics

## Young people tend to work in retail and accommodation / food service industries



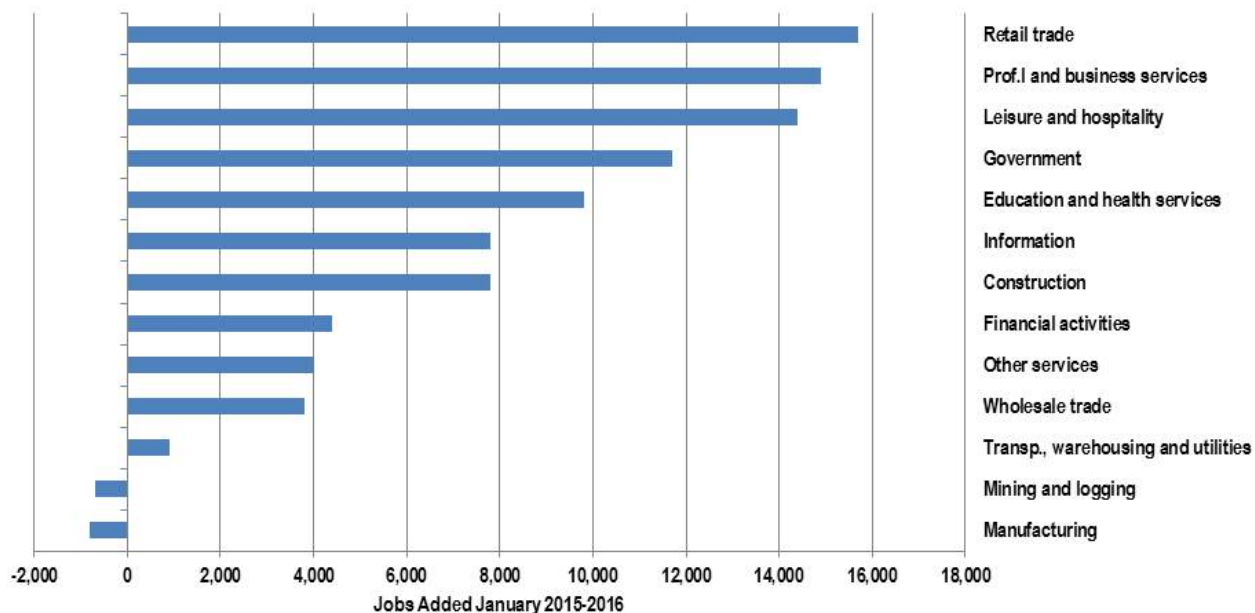
Source: Department of the Census, LEHD

## The youngest workers have steadily declined in retail and accommodation/food service



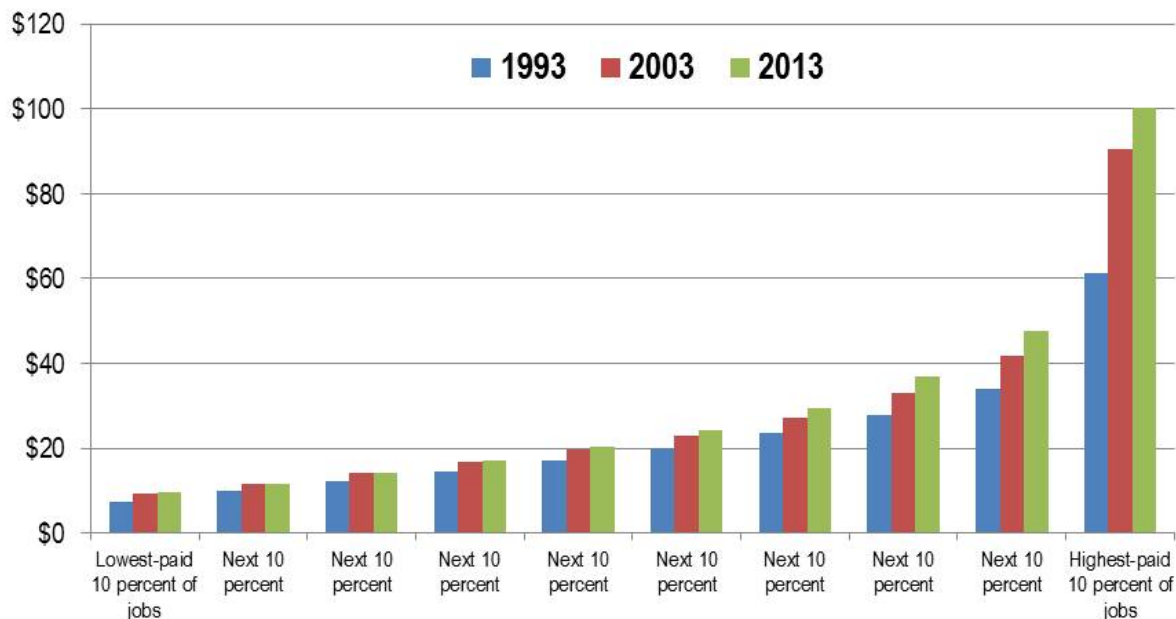
Source: Department of the Census, LEHD

## Most jobs were added in retail, followed closely by the professional & business services sector



Source: Washington State Employment Security Department

## Growth in hourly wages fastest at the top end, and most of it occurred 2003-2013



Source: Washington State Employment Security Department



# Questions?

- Dave Wallace, Workforce Board Research Manager  
(360) 709-4613 | [dave.wallace@wtb.wa.gov](mailto:dave.wallace@wtb.wa.gov)
- Eleni Papadakis, Workforce Board Executive Director  
(360) 709-4600 | [eleni.papadakis@wtb.wa.gov](mailto:eleni.papadakis@wtb.wa.gov)

16

[Contact Us](#)

[Comment Policy](#)

[Give Us Your Feedback](#)

[Legislative Reports](#)

[Apply Lean](#)

[Foster Performance Audits](#)

[Measure Results](#)

[Gov. Inslee's New Strategic Framework](#)

[Video Message from the Governor](#)

[Printable Trifold about Results Washington](#)



Powered By  Socrata