



Search

Results Resources ▾ Home



Sign In



1.2.k. Increase the percentage of students with Individualized Education Programs (IEPs) aged 6-21 served inside the regular class between 40%-100% of the school day by 2%

Reported: August 1, 2016

1.2.k. Increase the percentage of students with Individualized Education Programs (IEPs) aged 6-21 served inside the regular class between 40%-100% of the school day by 2%



## STUDENTS WITH INDIVIDUALIZED EDUCATION PROGRAMS SERVED IN REGULAR EDUCATION CLASSES

---

**Office of Superintendent of  
Public Instruction**

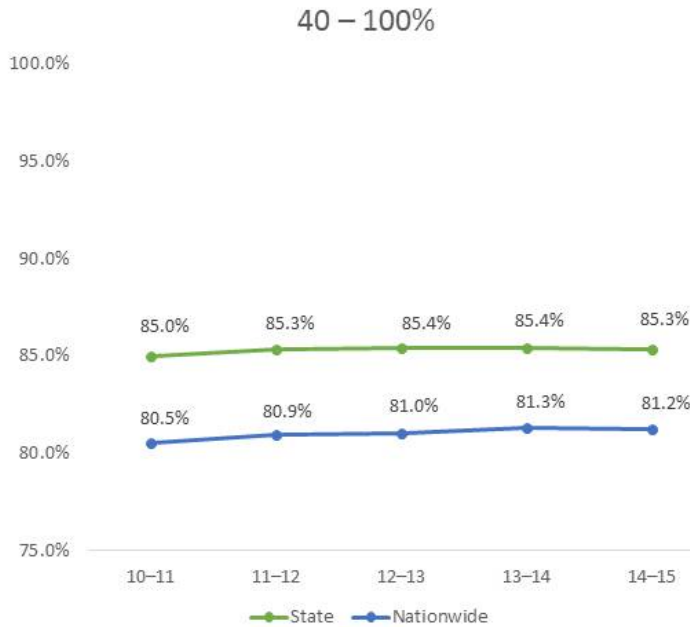
**Doug Gill, Ed.D.**

**Aug. 1, 2016**



1.2.k. Increase the percentage of students with Individualized Education Programs (IEPs) aged 6-21 served inside the regular class between 40%-100% of the school day by 2%

# Background:



## What is Least Restrictive Environment?

- Who determines a student's placement?
- How are students served?
- How does Washington compare to other states?

Source State Data: November 2014 Data Collection, National Data is from US DOE. <http://www2.ed.gov/programs/osepidea/518-data/index.html>

	80% to 100% of the day in Regular Classroom Setting				Statewide Population by Disability Ages 6-21	% of Statewide Pop by Disability Ages 6-21	% of Nationwide Pop by Disability 40-100%	
	Age 6-11	Age 12-17	Age 18-21	Age 6-21				
DEVELOPMENTAL DELAYS	1	4237	4237	4237	8018	56.5%	63.7%	
EMOTIONAL/BEHAVIORAL DISABILITY	2	660	1001	1051	1828	45.4%	66.3%	
ORTHOTOPIC IMPAIRMENTS	3	169	78	71	254	408	62.3%	54.5%
HEALTH IMPAIRMENTS	4	451	645	608	1157	2477	47.4%	65.4%
SPECIFIC LEARNING DISABILITIES	5	10093	13816	1223	25122	43786	55.4%	69.3%
INTELLECTUAL DISABILITY	6	77	95	75	247	4800	5.1%	16.9%
MULTIPLE DISABILITIES	7	100	121	77	238	2641	9.0%	13.4%
DEAFNESS	8	See HI	See HI	See HI	See HI	See HI	See HI	See HI
HEARING IMPAIRMENTS	9	288	193	12	473	1049	45.1%	60.2%
VISUAL IMPAIRMENTS	10	101	91	11	204	356	57.3%	66.3%
DEAF-BLINDNESS	11	0	2	2	4	14	28.6%	73.2%
COMMUNICATION DISORDERS	12	13935	1339	14	15288	18203	94.4%	86.8%
AUTISM	13	1787	1644	162	3593	10560	34.0%	69.6%
TRAUMATIC BRAIN INJURY	14	29	61	13	105	300	31.0%	48.9%
TOTAL		36190	24961	2259	63410	118547	53.5%	63.9%

Special Education Students Ages 6-21	American Indian / Alaska Native					Hispanic or Latino	White	Native Hawaiian / Other Pac. Islander	Of More Than One Race	Total
	Asian	Black	Other	Other	Other					
80% to 100% of the day in Regular Classroom Setting	1383	2315	3316	13931	37435	423	4627	63410		
Statewide Population by Race/Ethnicity	2655	4481	7203	27877	86919	923	8799	118547		
% of Statewide Pop by Race/Ethnicity	51.3%	51.7%	45.5%	50.0%	55.9%	45.8%	55.1%	53.5%		
% of Nationwide Pop by Race/Ethnicity 80-100%	62.75%	56.71%	57.40%	61.6%	65.2%	54.92%	63.8%	81.2%		

Source State Data: November 2014 Data Collection, National Data is from US DOE. <http://www2.ed.gov/programs/osepidea/518-data/index.html>

	0% to 100% of the day in Regular Classroom Setting				Statewide Population by Disability Ages 6-21	% of Statewide Pop by Disability Ages 6-21	% of Nationwide Pop by Disability 40-100%
	Age 6-11	Age 12-17	Age 18-21	Age 6-21			
DEVELOPMENTAL DELAYS	1	7969	8010	8010	8010	59.4%	88.4%
EMOTIONAL/BEHAVIORAL DISABILITY	2	4163	4214	4214	4214	51.4%	82.4%
ORTHOTOPIC IMPAIRMENTS	3	462	498	498	498	88.5%	91.4%
HEALTH IMPAIRMENTS	4	21,966	24,297	24,297	24,297	98.6%	95.7%
SPECIFIC LEARNING DISABILITIES	5	45,297	45,296	45,296	45,296	99.3%	96.0%
INTELLECTUAL DISABILITY	6	4,783	4,800	4,800	4,800	99.2%	92.4%
MULTIPLE DISABILITIES	7	2,512	2,641	2,641	2,641	95.1%	75.7%
DEAFNESS	8	See HI	See HI	See HI	See HI	See HI	See HI
HEARING IMPAIRMENTS	9	938	1,045	1,045	1,045	89.4%	87.2%
VISUAL IMPAIRMENTS	10	371	356	356	356	90.7%	88.9%
DEAF-BLINDNESS	11	13	14	14	14	100.0%	100.0%
COMMUNICATION DISORDERS	12	15,958	16,203	16,203	16,203	98.4%	96.1%
AUTISM	13	10,367	10,560	10,560	10,560	98.7%	90.7%
TRAUMATIC BRAIN INJURY	14	29	61	61	61	87.3%	91.6%
TOTAL		118,881	118,547	118,547	118,547	98.5%	94.7%

Special Education Students Ages 6-21	American Indian / Alaska Native					Hispanic or Latino	White	Native Hawaiian / Other Pac. Islander	Of More Than One Race	Total
	Asian	Black	Other	Other	Other					
0% to 100% of the day in Regular Classroom Setting	2,619	4,425	7,176	27,665	65,795	924	8,287	116,881		
Statewide Population by Race/Ethnicity	2,655	4,481	7,203	27,877	66,919	923	8,799	118,547		
% of Statewide Pop by Race/Ethnicity	58.64%	58.75%	48.40%	59.24%	98.32%	99.02%	98.67%	98.59%		
% of Nationwide Pop by Race/Ethnicity 0-100%	97.04%	81.1%	94.09%	95.06%	94.24%	96.20%	95.55%	94.7%		

Source State Data: November 2014 Data Collection, National Data is from US DOE. <http://www2.ed.gov/programs/osepidea/518-data/index.html>

	40% to 100% of the day in Regular Classroom Setting				Statewide Population by Disability Ages 6-21	% of Statewide Pop by Disability Ages 6-21	% of Nationwide Pop by Disability 40-100%	
	Age 6-11	Age 12-17	Age 18-21	Age 6-21				
DEVELOPMENTAL DELAYS	1	6423	6423	6423	8018	60.7%	82.8%	
EMOTIONAL/BEHAVIORAL DISABILITY	2	991	2007	195	3193	45.2%	63.2%	
ORTHOTOPIC IMPAIRMENTS	3	206	113	14	333	408	81.6%	70.3%
HEALTH IMPAIRMENTS	4	7183	23616	1192	21011	26297	85.5%	86.4%
SPECIFIC LEARNING DISABILITIES	5	16017	25761	2243	44011	45736	97.0%	92.3%
INTELLECTUAL DISABILITY	6	497	936	365	1798	4800	37.5%	43.2%
MULTIPLE DISABILITIES	7	226	432	190	788	2641	29.8%	29.8%
DEAFNESS	8	See HI	See HI	See HI	See HI	See HI	See HI	See HI
HEARING IMPAIRMENTS	9	387	391	39	817	1049	77.9%	75.7%
VISUAL IMPAIRMENTS	10	152	154	16	302	356	84.8%	78.6%
DEAF-BLINDNESS	11	1	2	2	4	14	50.0%	86.5%
COMMUNICATION DISORDERS	12	14262	1804	28	15894	16039	98.1%	91.9%
AUTISM	13	2669	3140	396	6205	10560	60.1%	58.0%
TRAUMATIC BRAIN INJURY	14	55	130	76	211	305	68.9%	44.4%
TOTAL		49210	47286	4646	101152	118547	85.3%	81.2%

Special Education Students Ages 6-21	American Indian / Alaska Native					Hispanic or Latino	White	Native Hawaiian / Other Pac. Islander	Of More Than One Race	Total
	Asian	Black	Other	Other	Other					
40% to 100% of the day in Regular Classroom Setting	2321	3437	5895	24930	52446	758	7183	101152		
Statewide Population by Race/Ethnicity	2655	4481	7203	27877	66919	923	8399	118547		
% of Statewide Pop by Race/Ethnicity	87.4%	76.7%	80.8%	87.3%	85.5%	82.1%	85.3%	85.3%		
% of Nationwide Pop by Race/Ethnicity 40-100%	86.45%	73.22%	77.01%	80.26%	83.48%	81.18%	82.47%	81.2%		

Source State Data: November 2014 Data Collection, National Data is from US DOE. <http://www2.ed.gov/programs/osepidea/518-data/index.html>

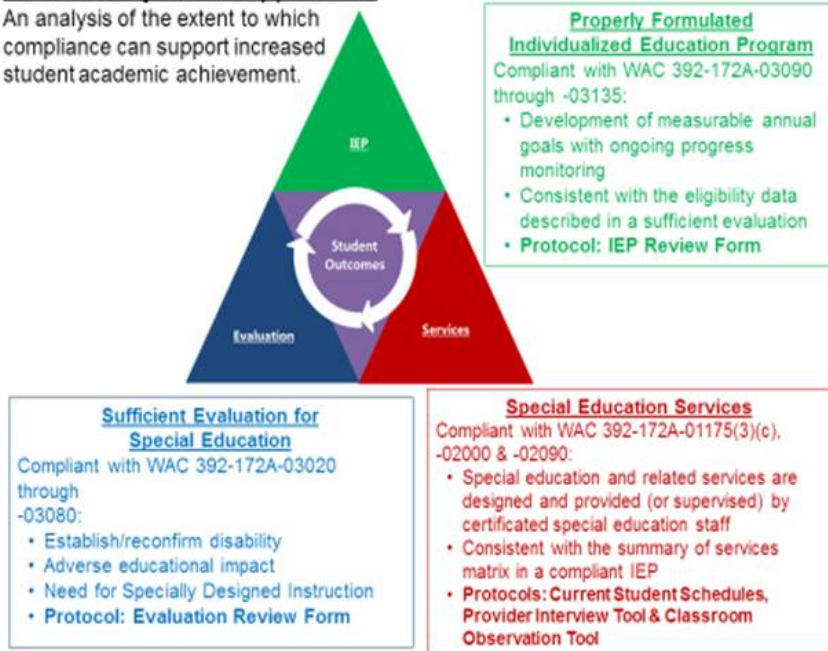
	up to 99% of the day in Regular Classroom Setting				Statewide Population by Disability Ages 6-21	% of Statewide Pop by Disability Ages 6-21	% of Nationwide Pop by Disability 40-100%
	Age 6-11	Age 12-17	Age 18-21	Age 6-21			
DEVELOPMENTAL DELAYS	1	197	8010	1917	10197	85.2%	100.0%
EMOTIONAL/BEHAVIORAL DISABILITY	2	593	4324	2144	5461	71.4%	21.8%
ORTHOTOPIC IMPAIRMENTS	3	49	408	1619	2166	28.6%	21.8%
HEALTH IMPAIRMENTS	4	2,865	24,297	12,174	39,336	97.5%	9.3%
SPECIFIC LEARNING DISABILITIES	5	1,188	45,176	2,616	49,080	98.2%	49.2%
INTELLECTUAL DISABILITY	6	2,965	4,800	61,778	70,543	98.6%	45.4%
MULTIPLE DISABILITIES	7	1,274	2,641	69,396	73,311	98.6%	45.4%
DEAFNESS	8	See HI	See HI	See HI	See HI	See HI	See HI
HEARING IMPAIRMENTS	9	171	1,049	11,578	13,597	100.0%	100.0%
VISUAL IMPAIRMENTS	10	19	156	5,349	5,564	100.0%	100.0%
DEAF-BLINDNESS	11	5	14	42,805	42,824	100.0%	100.0%
COMMUNICATION DISORDERS	12	164	16,203	6,396	23,063	100.0%	100.0%
AUTISM	13	4,022	10,560	38,096	52,678	100.0%	100.0%
TRAUMATIC BRAIN INJURY	14	91	309	29,636	30,036	100.0%	100.0%
TOTAL		15,229	118,547	13,276	146,052	100.0%	100.0%

Special Education Students Ages 6-21	American Indian / Alaska Native					Hispanic or Latino	White	Native Hawaiian / Other Pac. Islander	Of More Than One Race	Total
	Asian	Black	Other	Other	Other					
up to 99% of the day in Regular Classroom Setting	298	988	1,283	3,833	8,547	156	1,324	15,729		
Statewide Population by Race/Ethnicity	2,655	4,481	7,203	27,877	66,919	923	8,399	118,547		
% of Statewide Pop by Race/Ethnicity	11.22%	22.05%	17.56%	13.39%	16.50%	16.50%	18.38%	13.27%		
% of Nationwide Pop by Race/Ethnicity up to 99%	10.60%	20.97%	17.03%	15.85%	10.75%	15.00%	13.12%	13.50%		

## Problem/Opportunity:

### Consistency Index Application:

An analysis of the extent to which compliance can support increased student academic achievement.



- Consistency Index diagram

[Contact Us](#)   [Comment Policy](#)   [Give Us Your Feedback](#)   [Legislative Reports](#)   [Apply Learn](#)

[Foster Performance Audits](#)   [Measure Results](#)   [Gov. Inslee's New Strategic Framework](#)

[Video Message from the Governor](#)   [Printable Trifold about Results Washington](#)



Powered By Socrata