



Search

Results Resources ▾ Home



Sign In



Supplemental Report: 1.3.a - Increase the percentage of eligible students who sign up for College Bound program from 80% to 92% by 2016-17

Reported: Nov. 7, 2016



1.3.A INCREASE PERCENTAGE OF ELIGIBLE STUDENTS WHO SIGN UP FOR COLLEGE BOUND PROGRAM

Washington Student Achievement Council

Rachelle Sharpe, Ph.D.

November 7, 2016



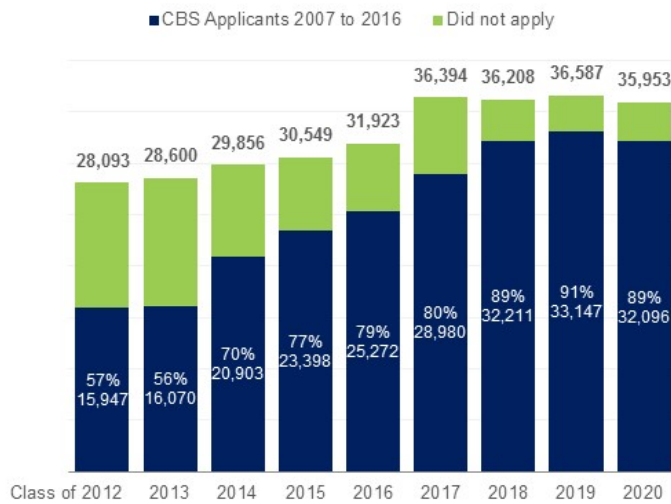
Background:



College Bound is an early commitment of financial aid to middle school students from low-income families.

Students pledge to:

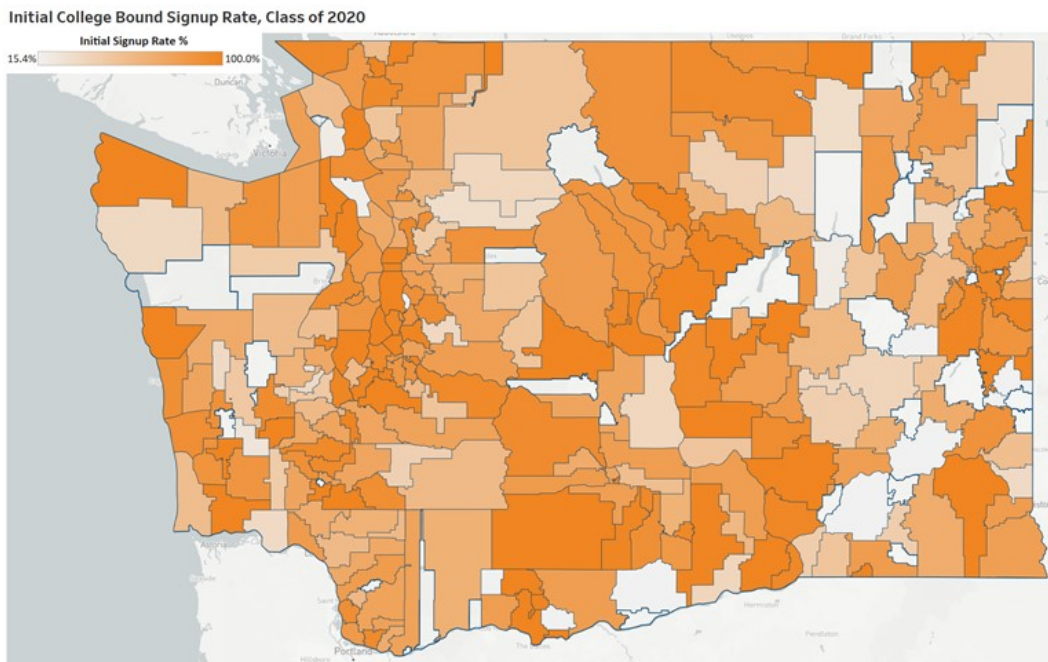
- Graduate high school with at least a 2.0 GPA
- Stay crime free
- Prepare for and get admitted to college
- Apply for financial aid in a timely manner



Source: WSAC administrative data.
Note: total is reflective of 7th grade fall snapshot.

Over 247,000 students have applied for College Bound and the initial rate increased 34 percentage points in seven years.

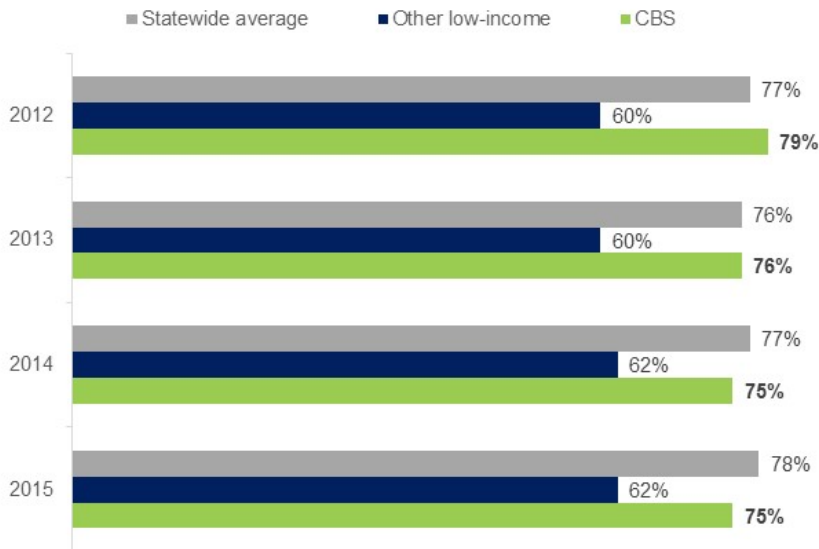
Current State: Initial sign-up rates have exceeded the target. Sign-ups are strong and consistent statewide.



Source: WSAC administrative data and OSPI free-and-reduced lunch data from Fall 7th grade 2015.

Current State:

Students are graduating at about the statewide rate.

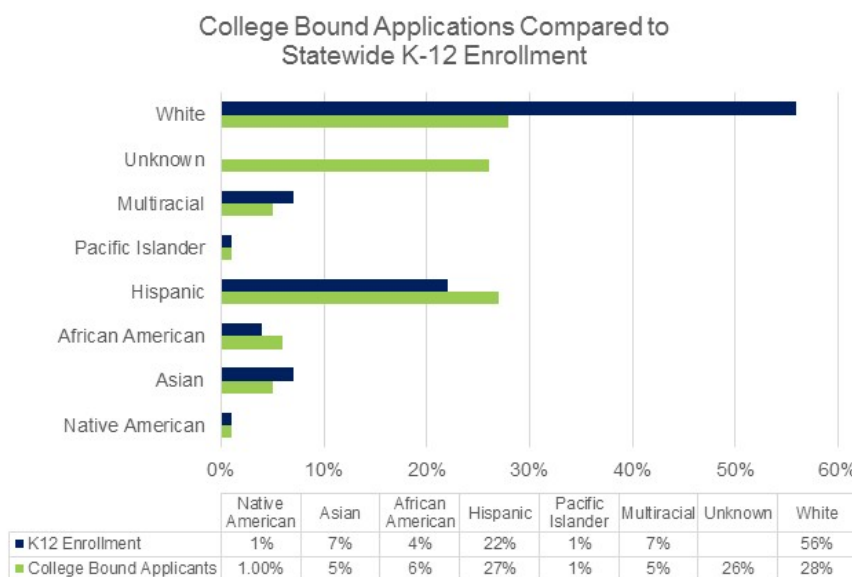


Graduation rates for CBS students are at least 10 percentage points higher than non-CBS low-income peers.

Source: OSPI staff analysis of WSAC CBS applicant data.

Opportunity:

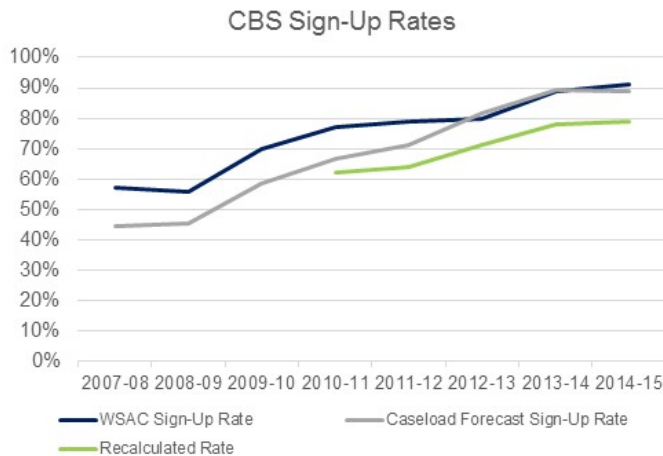
College Bound addresses the educational opportunity gap.



College Bound students are more likely to represent racial/ethnic minority groups than the overall K-12 population.

Source: WSAC administrative data, OSPI Washington State Report Card

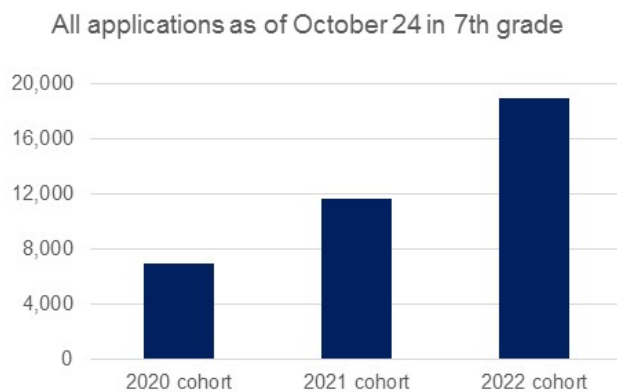
Strategy: The initial sign-up rates represent a snapshot of fall of 7th grade. Retroactive reconciliation demonstrates a wider gap in participation.



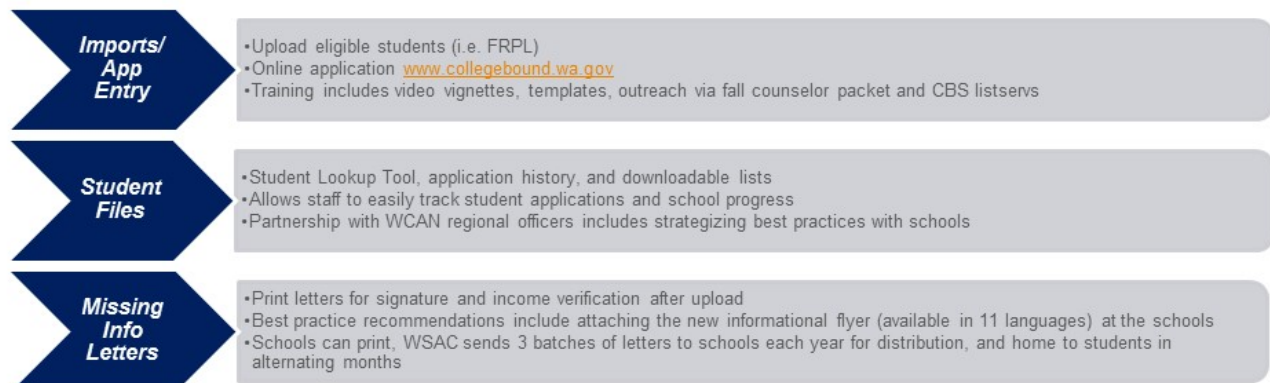
Source: WSAC administrative data, Caseload Forecast data, OSPI analysis of CBS applicants.

- Applications have increased over time.
- Using an initial snapshot of eligible students provides a baseline.
- Reconciled rates capture increases in the number of eligible students and describe the missed opportunity.

Strategy:



Emphasis on web-based applications and automatic upload of eligible students leads to earlier and higher numbers of applications.



Detailed Action Plan:

Task	Task Lead	Partners	Expected Outcome	Status	Due Date
Roll-out of reconciled rate vs. initial rate with practitioners	WSAC	WCAN, regional nonprofits, and districts	Increase understanding that students are missing access to CBS opportunity	In progress	December 2016
Increase usage of WSAC portal for auto-upload	WSAC	WCAN, regional nonprofits, and districts	Increase in applications started and ultimately completed applications	Started in 2016-17 academic year	Ongoing
New resources for both middle school and high school practitioners working with CBS students	WSAC	WCAN, regional nonprofits	Increase in completed CBS applications and students accessing the scholarship	Started in 2016-17 academic year	Revised annually
Increase understanding of what the commitment of CBS entails	WSAC	WCAN, regional nonprofits, and districts	More informed students and families and impact of scholarship	Started in 2016-17 academic year	Ongoing

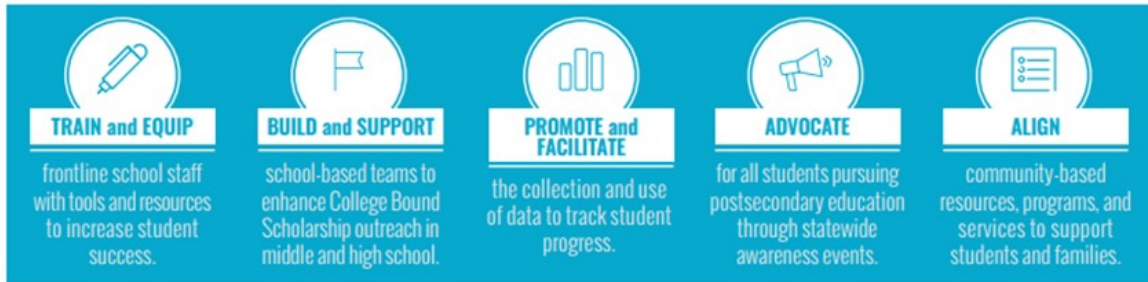
Assistance Needed:

- Student support related requests that target services to underrepresented and underserved students.
- Opportunity gap innovation grant proposed by WSAC would incentivize creative approaches to support College Bound and other students.
- Attend and participate in *Pave the Way* to learn about and share best retention practices.



College Success Foundation

- Michelle Alejano, College Success Foundation & Washington College Access Network
- Our charge: maximize school adoption and integration of the College Bound Scholarship in middle and high schools statewide.
- We serve schools statewide with regional officers that:



2015-2016 Results



College Bound High School Repledge- **Launching February 2017**

- Inspiring 9th grade students to recommit to the College Bound Scholarship pledge
- Targeted effort to support College Bound students transition from middle to high school
- Providing an opportunity to talk to College Bound students about pledge requirements and pathway options



Kent District Leadership & Community Partnerships

Randy Nuñez,
College Career Liaison
Kent School District



- 98–100% eligibility
8th graders signed up to the College Bound Scholarship for the last five years.
- Nearly 1,000 new CBS students are signed up each year, over half of our high school student population.
- New partnerships and programs are developing to meet the needs of CBS students, such as with University of Washington Tacoma’s Pathway to Promise and College Success Foundation.
- Annual KSD [College Bound Scholarship Conference](#) drawing over 1,000 students and parents, over hundred volunteers.



[Contact Us](#)

[Comment Policy](#)

[Give Us Your Feedback](#)

[Legislative Reports](#)

[Apply Learn](#)

[Foster Performance Audits](#)

[Measure Results](#)

[Gov. Inslee's New Strategic Framework](#)

[Video Message from the Governor](#)

[Printable Trifold about Results Washington](#)



Powered By  Socrata