



Search

Results Resources ▾ Home



Sign In



3.1.d: Supplemental - Make 423,000 acre feet of new water supply available for agriculture by 2020



## GOAL 2, LEADING INDICATOR 3.1.d

---

Washington State Department of Agriculture

Kirk Robinson, Deputy Director

April 10, 2017



## Goal 3 – Sustainable, Efficient Infrastructure

### Outcome measure 3.1.d:

- Make 423,000 acre feet of new water supply available for agriculture by 2020

## 2015 Drought and Agriculture

Week of August 25, 2015



85% of the state was in extreme drought

- One of the worst droughts in state history
- It was felt statewide, but was particularly intense in areas of chronic water uncertainty (the lower Yakima River valley, Skagit County)
- Under an agreement with Ecology, WSDA gathered loss data from cultivated cropland, cattle and dairy operations, and targeted areas of concern

## Scope

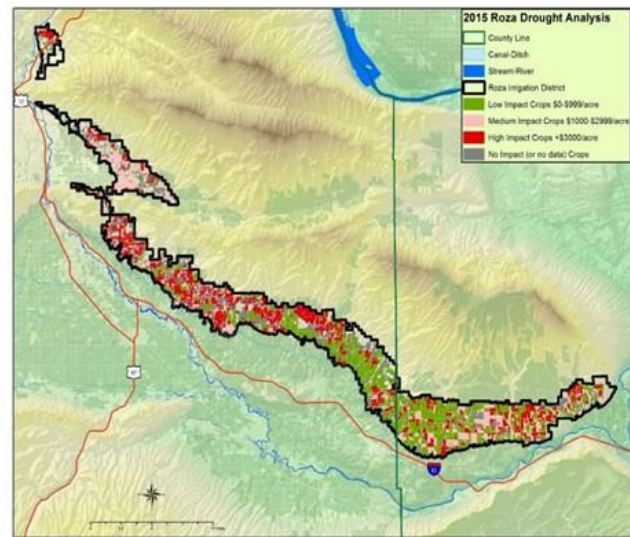
- Collect economic information across the state, in target areas, and from the majority of large commodities
- Provide information about both qualitative and quantitative impacts

## Purpose

- Gather data to help state agencies identify and prioritize resource needs in future drought years
- Provide economic data to assess large water storage project viability

## Target Area: Roza Irrigation District

- Lower Yakima valley district covering 72,000 acres
- Pro-ratable water rights – the first to be curtailed during a drought
- More than 50% planted in high value permanent crops (grapes, tree fruit, hops, etc.)



## Roza Data Sources and Results

- Mapping – windshield surveys (100% loss or fallow)
- Grower Interviews (Eight major crops covered)

Commodity	Roza Acreage	Average Loss/Acre	75% Roza Affected
Apples	20076.95	\$3,437.00	\$51,753,358
Cherries	4179.7	\$1,333.00	\$4,178,655
Hops	6822.7	\$1,150.00	\$5,884,579
Blueberries	1190.5	\$3,500.00	\$3,125,063
Wine Grapes	11006.7	\$818.00	\$6,752,610
Juice Grapes	7179.3	\$187.50	\$1,009,589
Field Corn	3439.2	\$260.00	\$670,644
Alfalfa	4200	\$337.50	\$1,063,125
<b>Total Loss</b>			<b>\$74,437,623</b>

## Other Actions that Helped Lessen Drought Impact in the Roza

- Water shut-off in May added 18 additional days of irrigation late in the season
- Water purchase from a senior water right holder added 14 days of irrigation
- District spent previous years transitioning leaky, unlined canals to pipes
- Growers installed additional irrigation efficiencies (longer lines, micro/drip systems)
- Use of shade cloth decreased sunburn impacts usually addressed using cooling water.



# Final Report Results

Section of Report	Loss (\$)
Blueberry Meeting	\$7,760,000
Raspberry Meeting	\$13,900,000
KRD Mapping	\$11,401,115
Roza Impacts (crop losses and drought wells)	\$75,783,834
WIP Interviews	\$32,691,211
Skagit Report	\$27,200,000
Livestock Survey	\$33,279,564
NASS Data*	\$501,002,853
<b>Total Estimated Loss**</b>	<b>\$703 million</b>
*Estimated losses from NASS data do not include acreages of commodities covered in other sections of the report.	
**Total loss estimate has been rounded to the nearest million.	

- Conservative range of \$633 to \$773 million in losses
- Covered more than 75% of the total cultivated crop acreage in WA
- This is only a small piece of the impact of a drought

## Detailed Action Plan:

Task	Task Lead	Partners	Expected Outcome	Status	Due Date
Meet all legal requirements to release the water for irrigation in the Odessa Subarea	ECY – Office of the Columbia River	U.S. Bureau of Reclamation	30,000 acre-ft.	<b>In process</b> Water is currently being delivered to 1,800 acres. Additional infrastructure under construction to deliver the balance. To be completed by due date.	12/31/17
Line or pipe canals	ECY – Office of the Columbia River	East Columbia, South Columbia and Quincy irrigation districts.	30,000 acre-ft.	<b>Complete</b> The last of 6 piping / lining phases done.	12/31/17
Widen the East low canal and construct 5 siphons	ECY – Office of the Columbia River	East Columbia irrigation district	Convey 164,000 acre-ft of surface water from the Odessa preferred alternative along with another 60,000 acre-ft from the Lake Roosevelt and Coordinated Conservation Projects to the Odessa Subarea	Canal widening and construction of two siphons underway.	12/31/17
Complete environmental impact statement for Kachess Drought Relief Pumping Plant Project.	ECY – Office of the Columbia River	U.S. Bureau of Reclamation	200,000 acre-ft.	EIS to be issued in the fall/winter of 2015	12/31/19
Complete testing and issue initial feasibility study.	ECY – Office of the Columbia River	Wind Power Developers	30,000 acre-ft.	Issue initial study in Summer of 2016	12/31/20

[Contact Us](#)

[Comment Policy](#)

[Give Us Your Feedback](#)

[Legislative Reports](#)

[Apply Lean](#)

[Foster Performance Audits](#)

[Measure Results](#)

[Gov. Inslee's New Strategic Framework](#)

[Video Message from the Governor](#)

[Printable Trifold about Results Washington](#)



Powered By 