



Search

Results Resources ▾ Home



Sign In



Measure 4.1: Supplemental - Increase statewide acreage dedicated to working farms (cropland) from 7.237 million to 7.347 million by 2020



***OUTCOME MEASURE: 4.1 FARMLAND
LEADING INDICATOR: 4.1.A. FARMLAND ACREAGE***

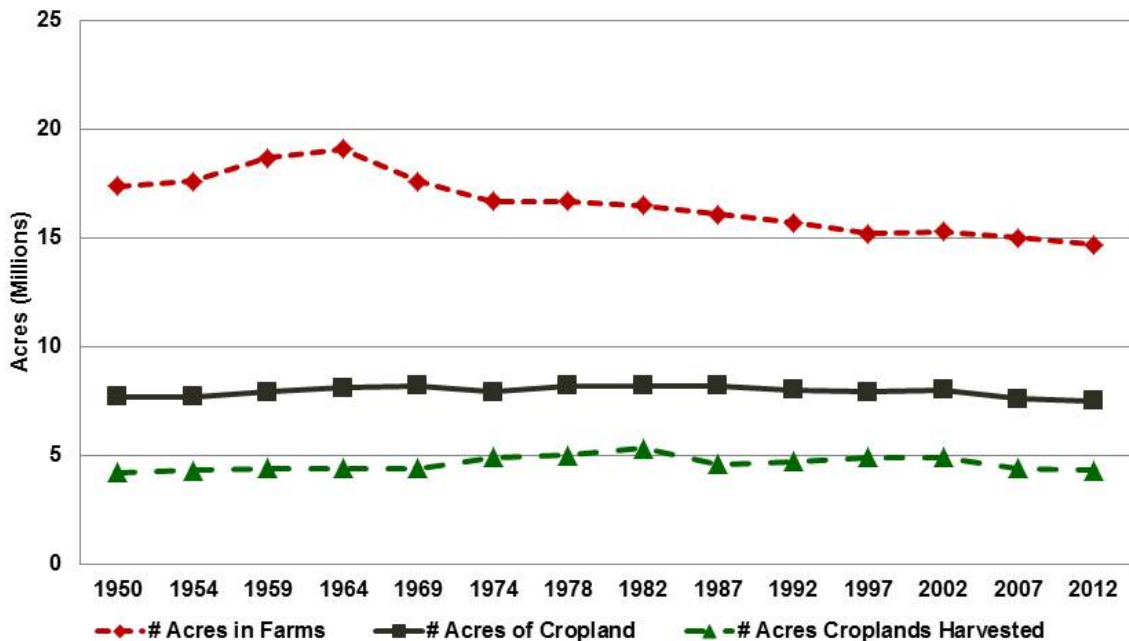
**Washington State Department of
Agriculture**

Kirk Robinson, Deputy Director

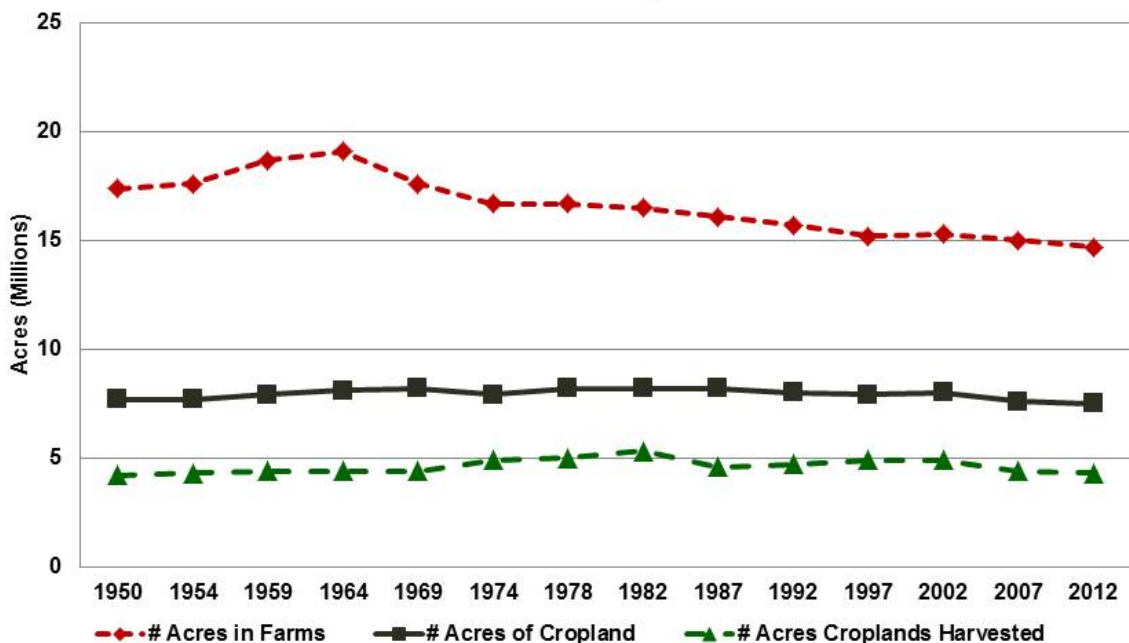
May 9, 2016



Acres of Farms, Croplands, & Harvested Croplands 1950 thru 2012 Data Source: Census of Agriculture - USDA

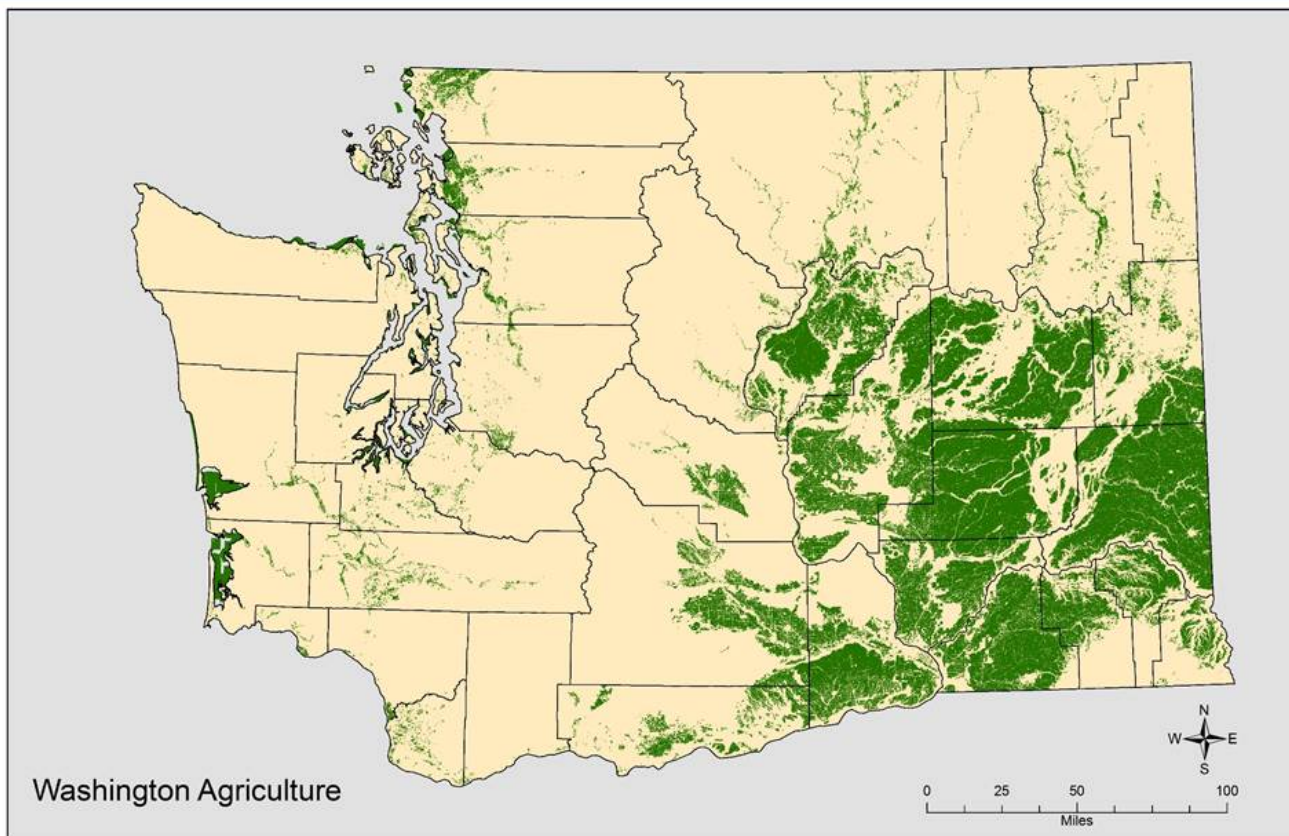
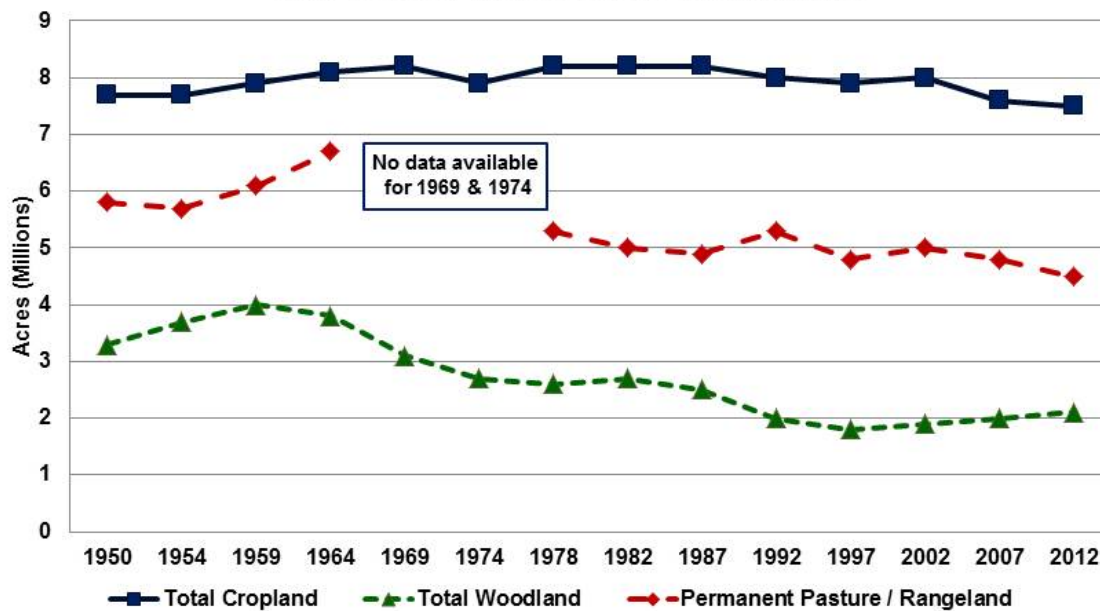


Acres of Farms, Croplands, & Harvested Croplands 1950 thru 2012 Data Source: Census of Agriculture - USDA

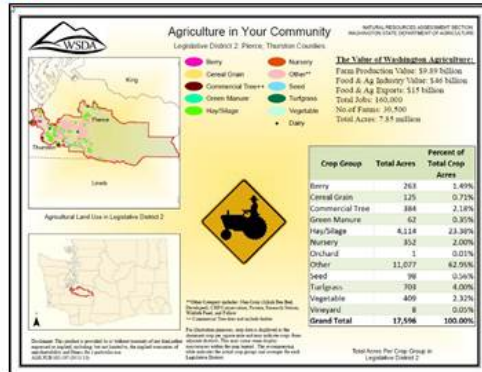


Acres of Cropland, Woodland, & Permanent Pasture/Rangeland in Washington - 1950 thru 2012

Data Source: USDA Census of Agriculture

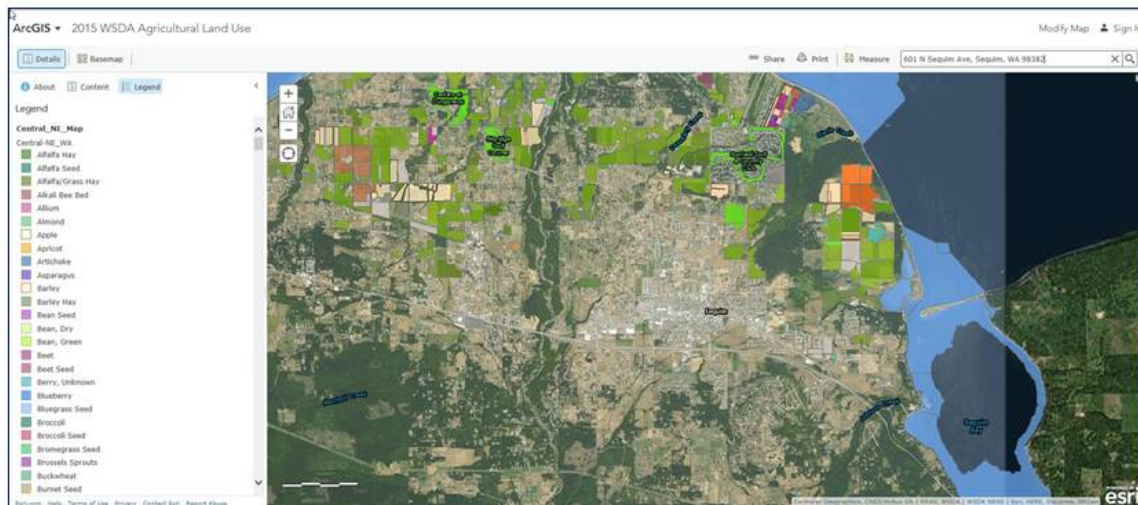


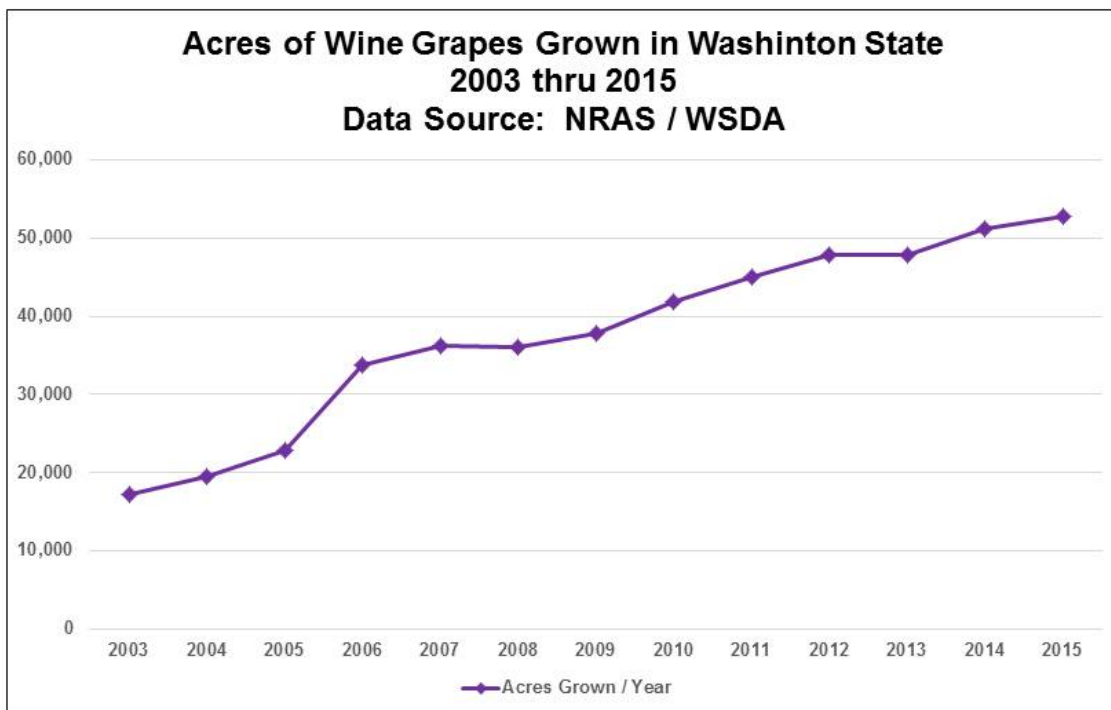
WSDA Website – Agricultural Land Use



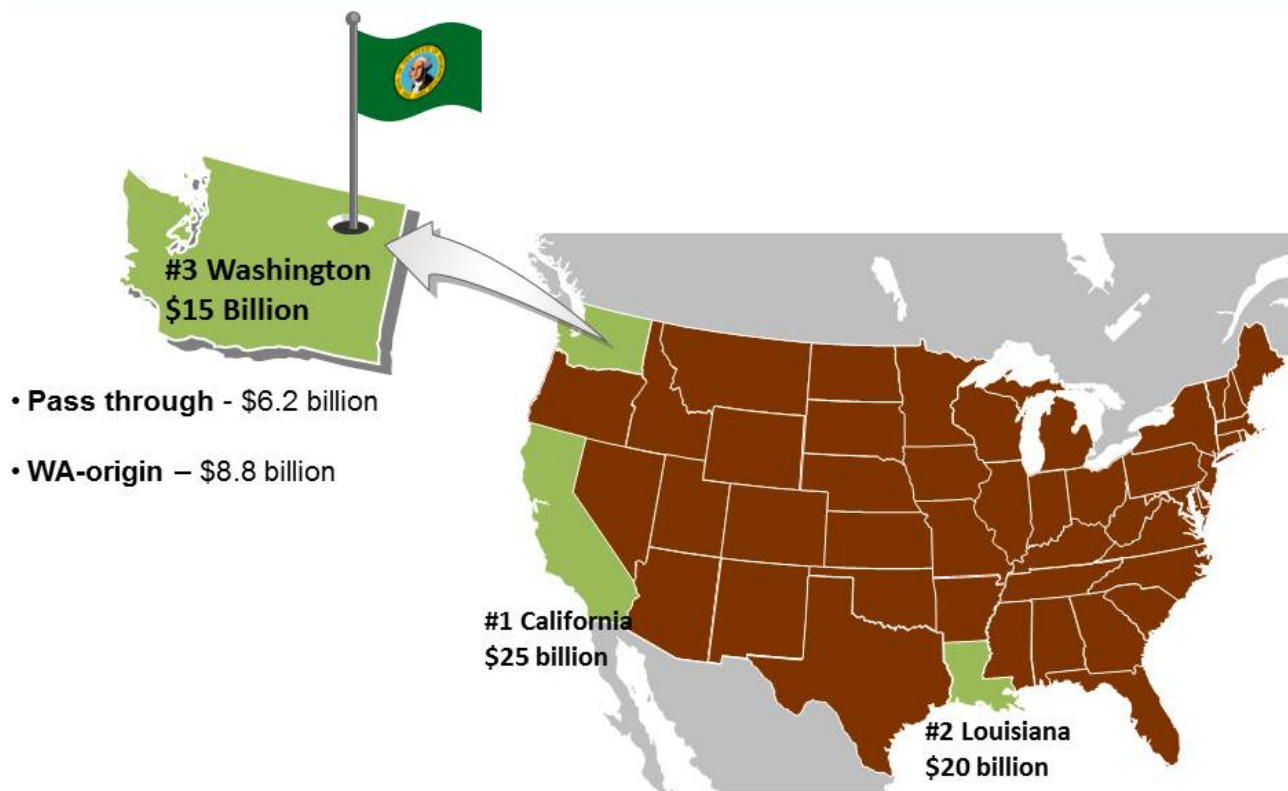
Link to interactive Agricultural Land Use on WSDA Website –

<https://www.arcgis.com/home/webmap/viewer.html?webmap=16752079bfc74eebaa8e5ec33b5dc468&extent=-125.3061,45.6046,-116.7038,49.5021>





Importance of Exports to Washington



Source: World Trade Atlas, CY13

WSDA International Marketing Program

Export Example—

- Washington grows 60% of the nation's apples
- Washington apples make up 90% of all US apple exports

What would happen to apple prices if all of those Washington apples stayed in the US?

WSDA Domestic Marketing Program

- ***Farm to School***
- Farmer's Markets
- Outreach and Education
 - ✓ Marketing
 - ✓ Growing Food Safety Regulations

Other WSDA Partners

- Office of the Superintendent of Public Instruction (OSPI)
- USDA
- Land Trusts
- Local Conservation Districts
- State Conservation Districts
- Counties

Ron Schultz

Director of Policy & Intergovernmental
Relations

Washington State Conservation Commission

Office of Farmland Preservation

- Established by the Legislature in 2007 and sits within the Washington State Conservation Commission
- Supports farmland retention and future farming viability
- Provides tools to farmers to help with farmland preservation
- ***Voluntary Stewardship Program***

Ryan Dicks
Pierce County Sustainability Manager

Pierce County



Pierce County



AGRICULTURE



Economic Development

AGRICULTURE

From Farm to Table

- 1,478 farms in Pierce County producing \$91 million in sales
- 11 Farmers Market totaling \$894,075 in sales





Farm Tours

AGRICULTURE

On the Farm

Pierce County Executive Pat McCarty has led five farm tours in the last 5 years. These tours have led to major changes in how we support our farmers in Pierce County.



Technology Solutions For Farmers

AGRICULTURE

Innovation

- Pierce County built the Puget Sound Fresh mobile app
- Puget Sound Fresh connects consumers with farms and markets in 14 counties!

DOWNLOAD THE **FREE** MOBILE APP

PUGET SOUND FRESH
good for all of us

Available now at pugetsoundfresh.org

Get it on Google play | Available on the App Store

Local farms & farmers markets | What's fresh & where to get it | Local Recipes



TDR/PDR

AGRICULTURE

Conserved over 250 acres of prime agriculture land

In 2015, Pierce County & Forterra brokered the largest farmland conservation (153 acres) in Pierce County history



New owners, Sidhu Farms acquired 70 acres of Matlock Farm's 153 acres



Improved Permitting

AGRICULTURE

- Streamlined Permitting Process
- Simplified the Transfer of Developmental Rights Process

Pierce County's Farming website is a one-stop resource for farmers.
www.piercecountywa.org/farming





Pierce County Farm Forums

AGRICULTURE

Executive McCarthy hosted
Pierce County Farm
Forums in 2014 & 2015

*Connecting farmers with institutional
buyers to expand their markets*



Pierce County Farm Forum Series

Agriculture Workshop Series

*Connecting farmers with information
that helps them run their businesses.*



Food Hubs: What are they and does Pierce County need one?

Farm to Table Trade Workshop

Drainage: On the Farm - A discussion on the problems & strategies

Irrigation Wells and Water Rights



Pierce County Floodplains For The Future



Floodplains By Design

Vision

Restored connections between rivers and land improve habitat for salmon, protect communities and critical infrastructure from flooding, and provide new opportunities for recreational and cultural uses while preserving agriculture in the Puyallup River Basin.

Mission

To apply transparency, trust, and shared leadership in order to plan, fund, and implement multi-benefit floodplain projects in the Puyallup, Carbon, and White River floodplains.



Pierce County Floodplains For the Future



Partners

American Rivers · Department of Ecology · The Floodplains by Design Initiative · Forterra · King-Pierce Farm Bureau · Muckleshoot Tribe · The Nature Conservancy · PCC Farmland Trust · Pierce County Round Table · Pierce Conservation District · Pierce County Office of Sustainability · Pierce County Planning and Land Services · Pierce County Surface Water Management · Port of Tacoma · Puget Sound Partnership · Puyallup Watershed Council · City of Puyallup · Puyallup Tribe · City of Sumner · WRIA 10/12

Detailed Action Plan:

Task	Task Lead	Partners	Expected Outcome	Status	Due Date
Meet with foreign governments to gain & expand access of WA food & agricultural products.	Joe Bippert, International Marketing	Governor's Office, Dept. of Commerce	Help Washington companies expand food and agricultural exports.	Complete	2015
Conduct grower outreach workshops with attorneys presenting concepts and techniques for business and estate planning.	Office of Farmland Preservation	Whatcom County	Increase farmer understanding of farm transfer and estate planning processes to keep farmland in farming.	Complete	2015
Work with stakeholders to increase state and federal funding for agricultural conservation easements in WA.	Office of Farmland Preservation	Farmland Preservation Roundtable	Increased amount of funding for agricultural conservation easements	Ongoing	
Conduct Latino grower outreach workshops with attorneys presenting concepts and techniques for business & estate planning.	Office of Farmland Preservation	Center for Latino Farmers	Increase Latino farmer understanding of farm transfer and estate planning processes to keep farmland in farming	Complete	2015

4.1 Farmland & 4.1.a Farmland Acreage

Assistance Needed:

- Leading Indicator 4.1.a – Maintain current acreage dedicated to working farms above the 7.237 million acres through 2015
- Leading Indicator goal was met in 2015
- Request changing this Leading Indicator to – Maintain current acreage dedicated to working farms above the 7.321 million acres through 2018

[Contact Us](#)

[Comment Policy](#)

[Give Us Your Feedback](#)

[Legislative Reports](#)

[Apply Lean](#)

[Foster Performance Audits](#)

[Measure Results](#)

[Gov. Inslee's New Strategic Framework](#)

[Video Message from the Governor](#)

[Printable Trifold about Results Washington](#)



Powered By  Seqrata