



4.2: Supplemental - Increase the average annual statewide treatment of forested lands for forest health and fire reduction from 145,000 to 200,000 acres by 2017



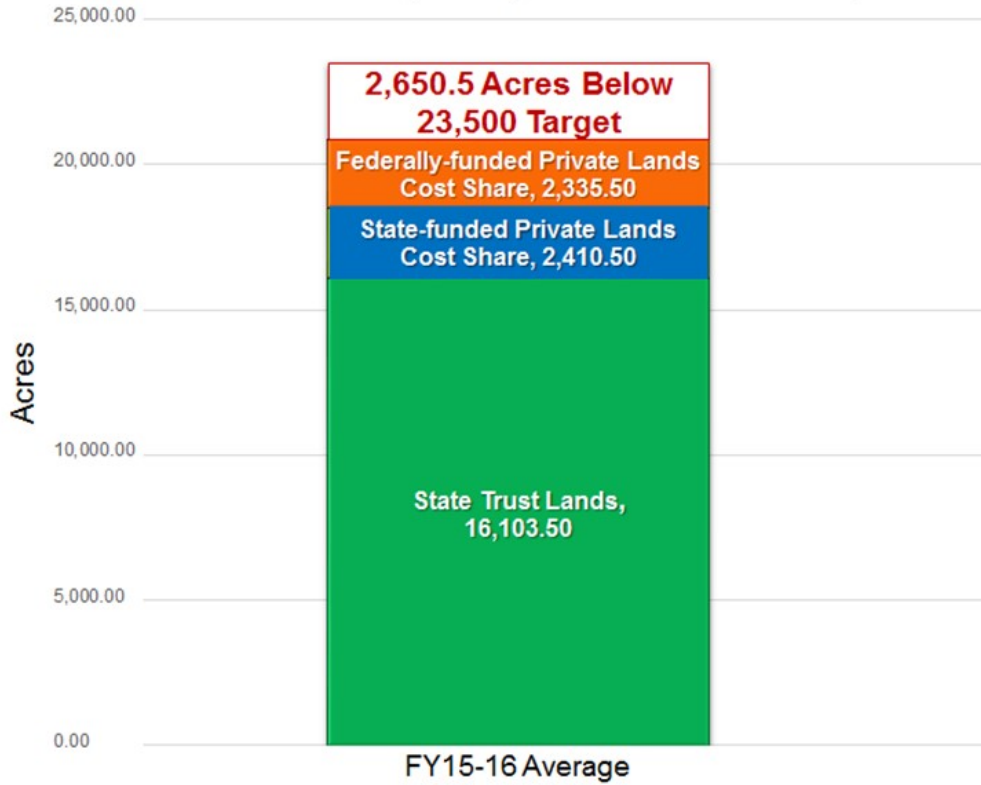
GOAL 3 RESULTS REVIEW: EASTSIDE FOREST HEALTH RESILIENCE

Washington Department of
Natural Resources

Commissioner Goldmark
September 13, 2016



DNR-Administered Eastern Washington Forest Health Treatments (Average acres from FY15-16)



Status:
Not on target

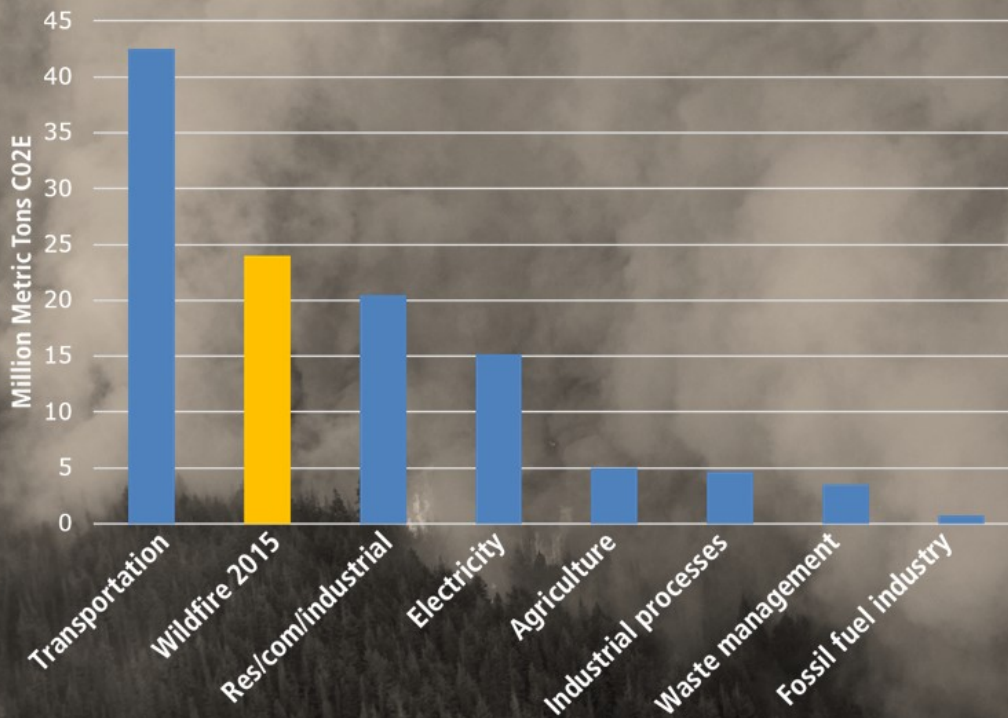
~20,849.5 acres on average for FY15-16

Current state: impacts from wildfire

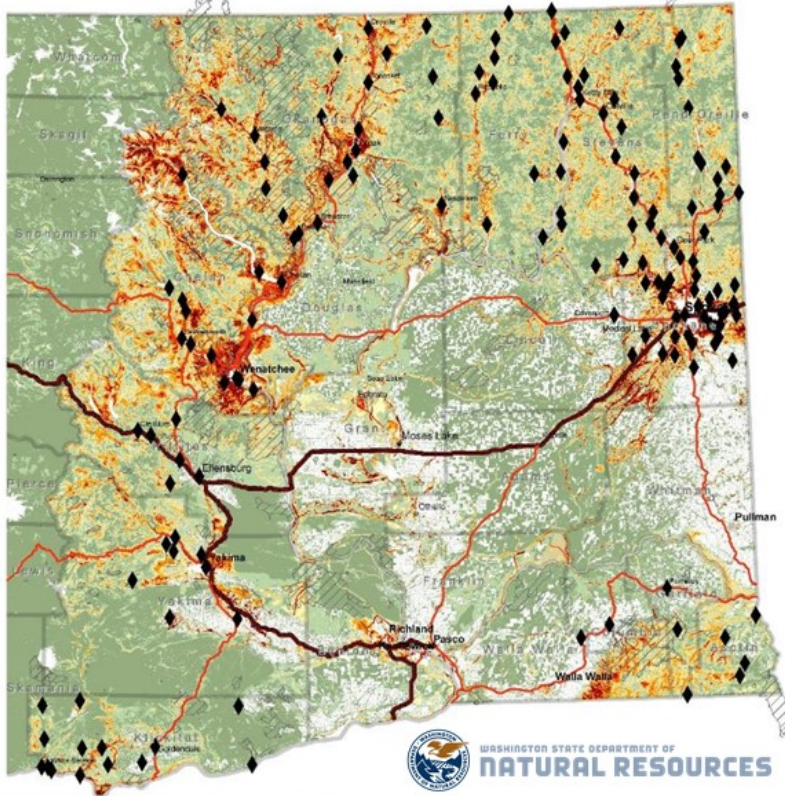


Washington's greenhouse gas emissions

Comparison of 2012 human-caused emissions with 2015 wildfire emissions



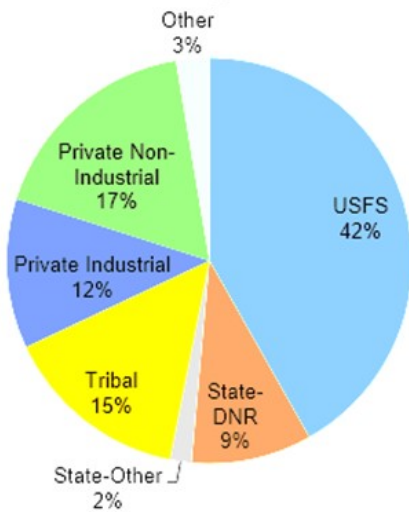
Eastern Washington Wildfire Risk Index and Communities at Risk From Wildfire



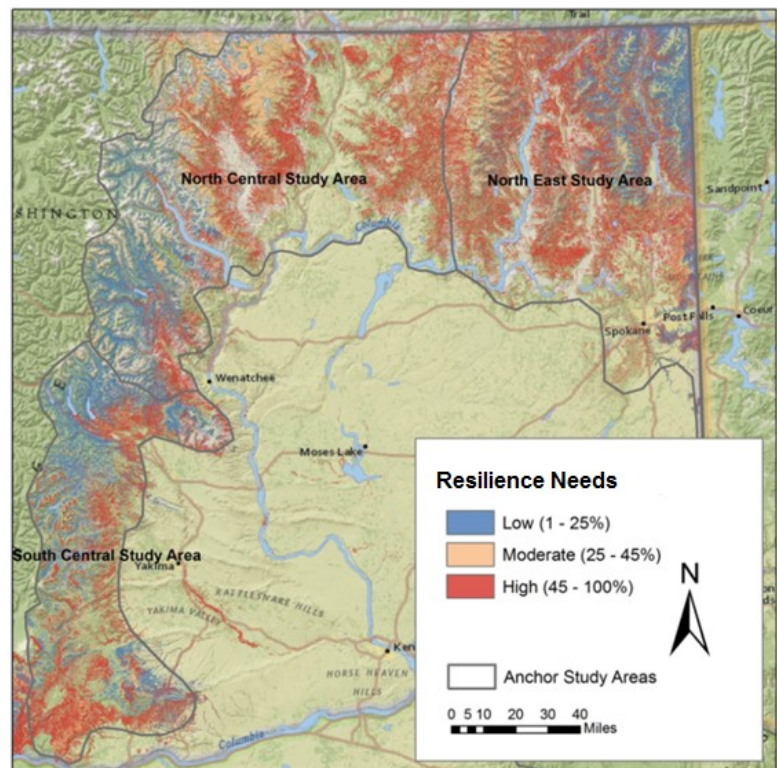
How big is the problem?

158 communities at risk

Current state: resilience need in eastern Washington

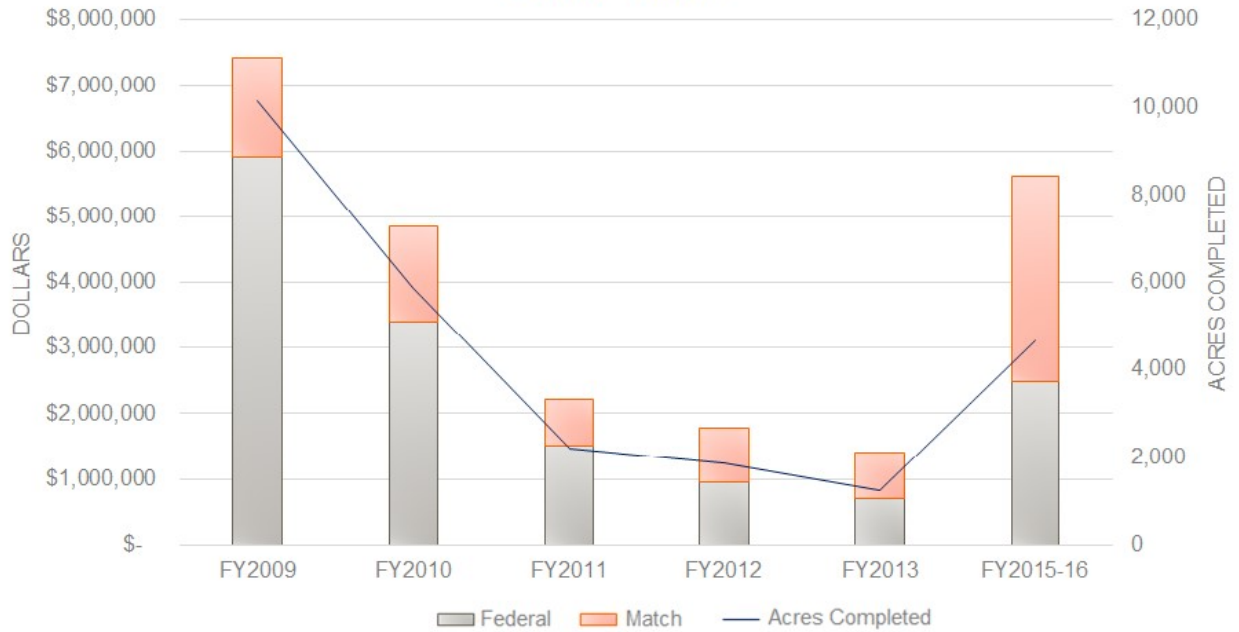


2.7 million acres in need of active management



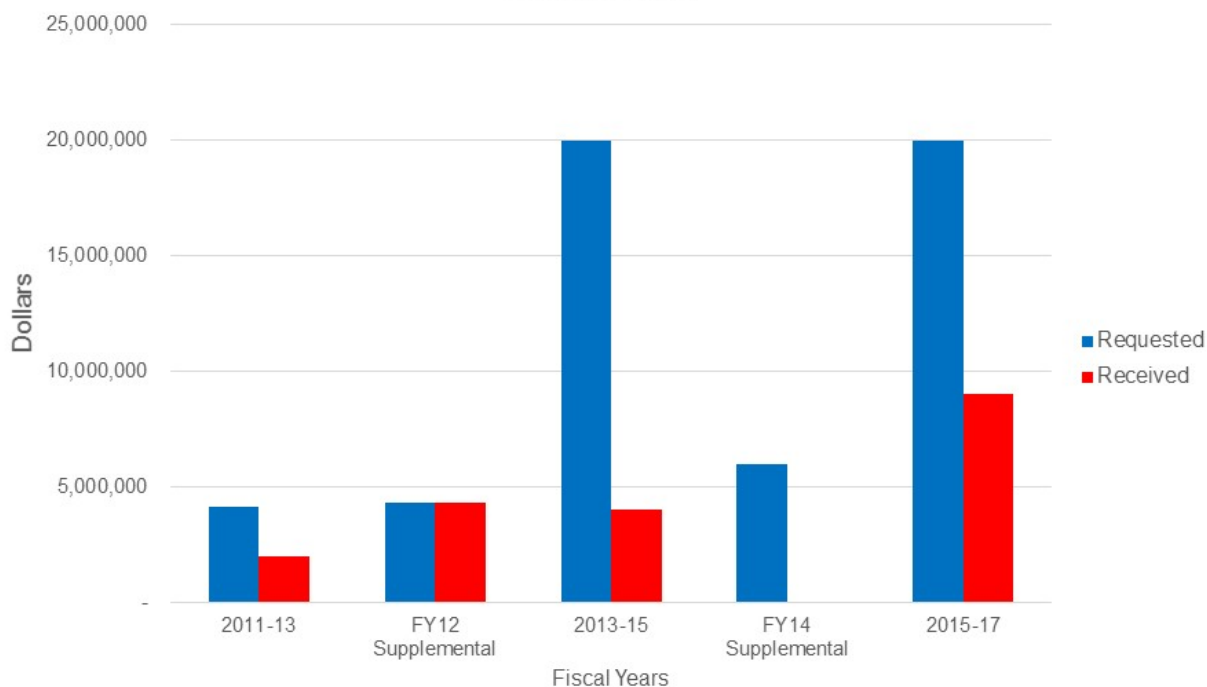
Current state: decreasing federal investments over time

FY09-FY16 Federal/Match Dollars for Forest Health Work on Private Lands



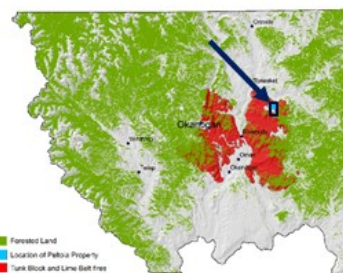
Current state: WA investment

State Capital Dollars Requested vs. Received for Forest Health Work



8

Brad Peltola & Lisa Forrer



Tunk Block and Lime Belt Fires, 2015



Before 2014 thinning



After fire

- 2015 Tunk Block Fire
- With the exception of 100 feet of cedar fence, no structures were lost
- 80% of their trees will likely survive

9

[KOMO News \(click here\)](#)

4.2.a: Increase treatment of forested lands for forest health and fire reduction from 22,000 acres to 23,500 acres of DNR-administered treatments by 2016



Strategy 3: Firewise Planning Pays Off



Firewise-prepped properties that survived the Suncrest fire near Leavenworth



Enrolled communities are on the rise!
Now 124 active communities in 2016

11



Cross-Laminated Timber: A market for forest restoration by-products

Opportunities to move the needle

- Increase the pace and scale of forest restoration
- Increase demand for small diameter wood and by-products from forest thinning
- Support Congressional efforts to end “Fire-borrowing” in the USFS budget

“The best friend on Earth of man is the tree. When we use the tree respectfully and economically, we have one of the greatest resources on Earth.”

– Frank Lloyd Wright –

Healthy Forests = Healthy Communities = Healthy State

14



PETER GOLDMARK
COMMISSIONER OF PUBLIC LANDS

[Contact Us](#)

[Comment Policy](#)

[Give Us Your Feedback](#)

[Legislative Reports](#)

[Apply Lean](#)

[Foster Performance Audits](#)

[Measure Results](#)

[Gov. Inslee's New Strategic Framework](#)

[Video Message from the Governor](#)

[Printable Trifold about Results Washington](#)



Powered By  Seqrata