

This Socrata-powered site may be unavailable for routine maintenance from Saturday, July 21, 2018 5:00 PM PDT to Saturday, July 21, 2018 6:00 PM PDT.



4.4.a: Supplemental - Increase hydraulic project approval compliance rate from 80% to 90% by 2016.

Hydraulic Permit Authority Compliance Monitoring



Fish Passage Structures

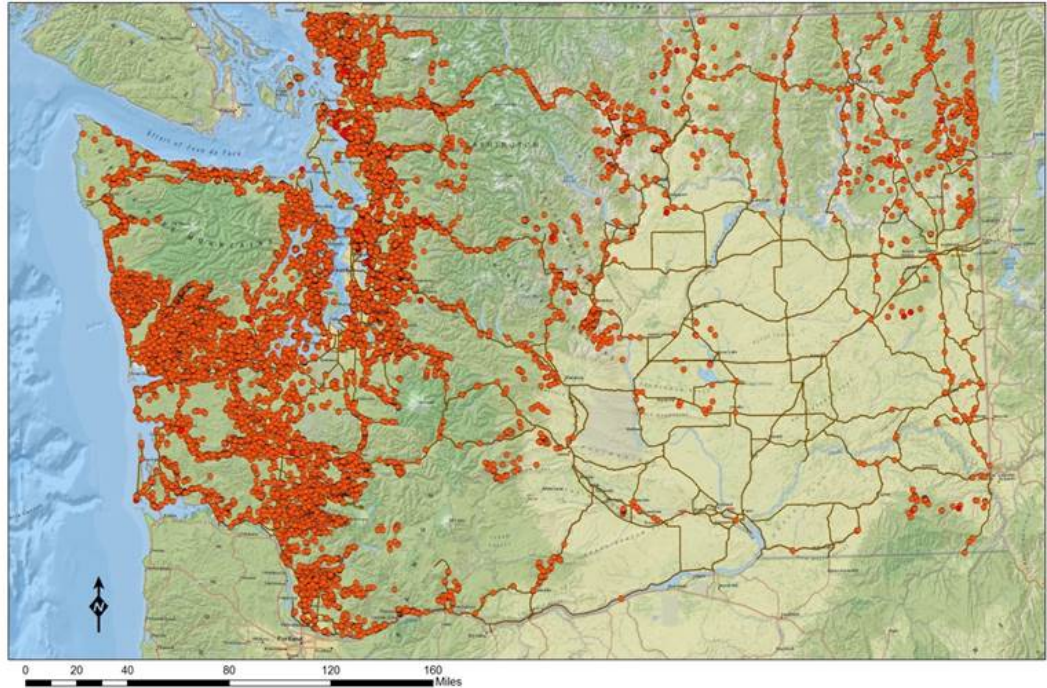
Marine Armoring



Scope of the issue

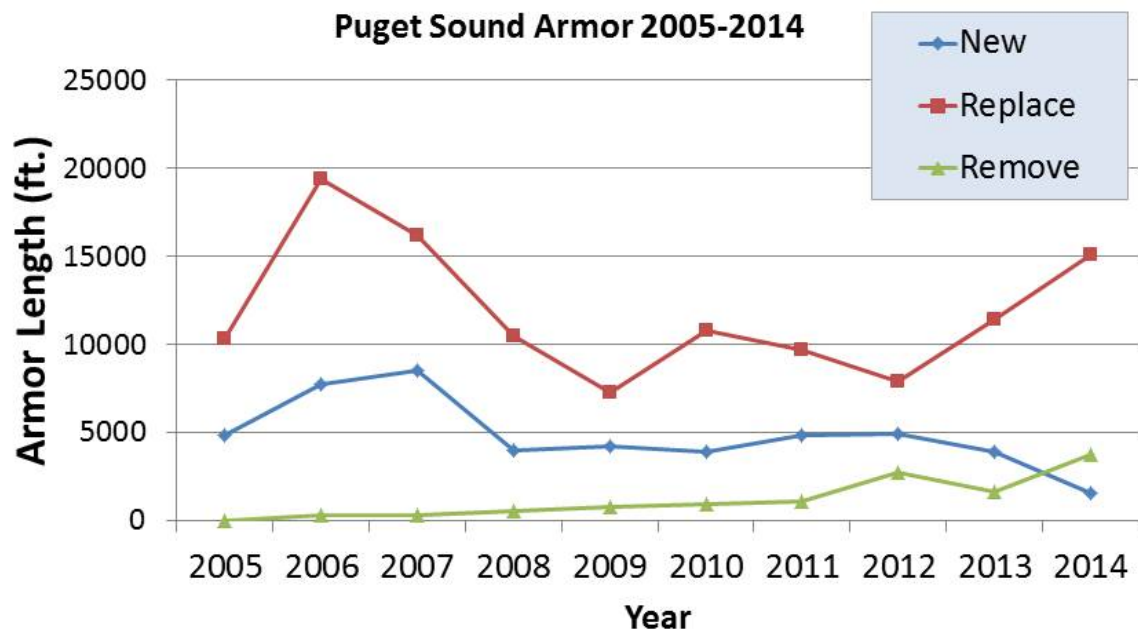
14,000
known
culvert
barriers in
database

35,000
estimated
barriers



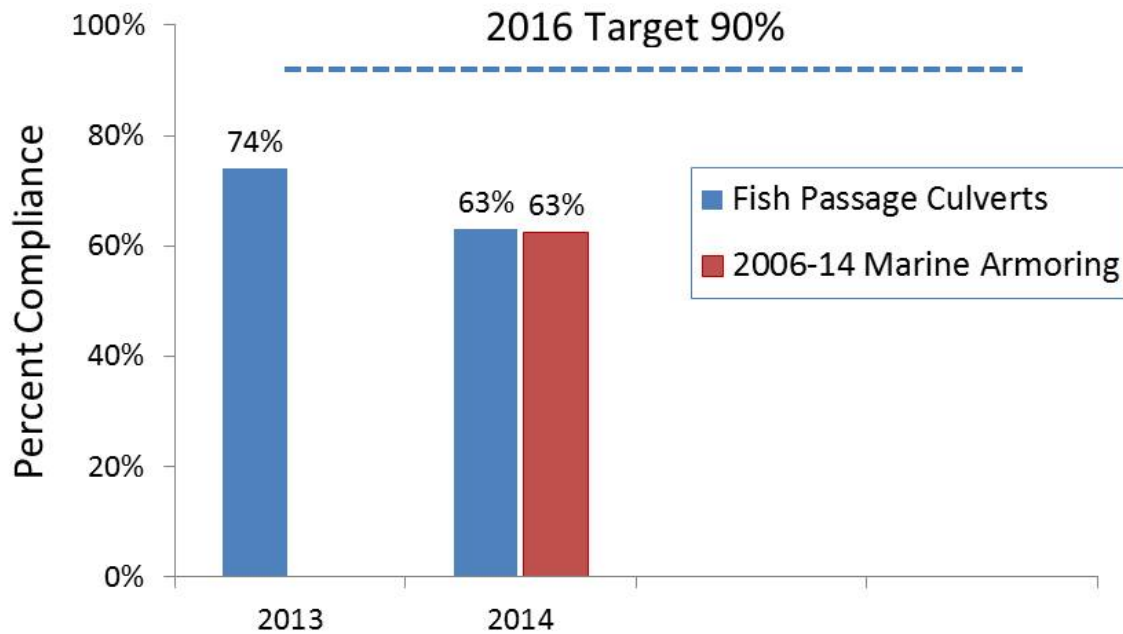
2

Shoreline armoring is a PSP Vital Signs Indicator



3

Compliance Rates for Hydraulic Permit Authority (HPA) permits



4

4.4.a. Increase hydraulic project approval compliance rate from 74% to 90% by 2016

WDFW expects to meet the 90% target compliance rate because:

New 1 Oct 2015 HPA rules require better protection:

Benchmarks and fish surveys, protection of ecological processes (e.g. sediment supply and transport)

Better Permit Design:

Standard Provisions for all HPA permits

Better WDFW Technical Assistance:

Applicants have re-application consultation with WDFW, Checklists and examples for technical drawings, and design guidance

Better Overall Training:

Within WDFW and between WDFW and DOT/County staff, Internal Science Support

Better permit monitoring:

Science Division conducting Implementation Monitoring

5

[Contact Us](#)

[Comment Policy](#)

[Give Us Your Feedback](#)

[Legislative Reports](#)

[Apply Lean](#)

[Foster Performance Audits](#)

[Measure Results](#)

[Gov. Inslee's New Strategic Framework](#)

[Video Message from the Governor](#)

[Printable Trifold about Results Washington](#)



Powered By  Seqrata