



Puget Sound Recovery

**Sheida Sahandy, Executive Director
and Partners**

September 27, 2017



Necessary and ongoing learning—
how to protect and recover Puget
Sound

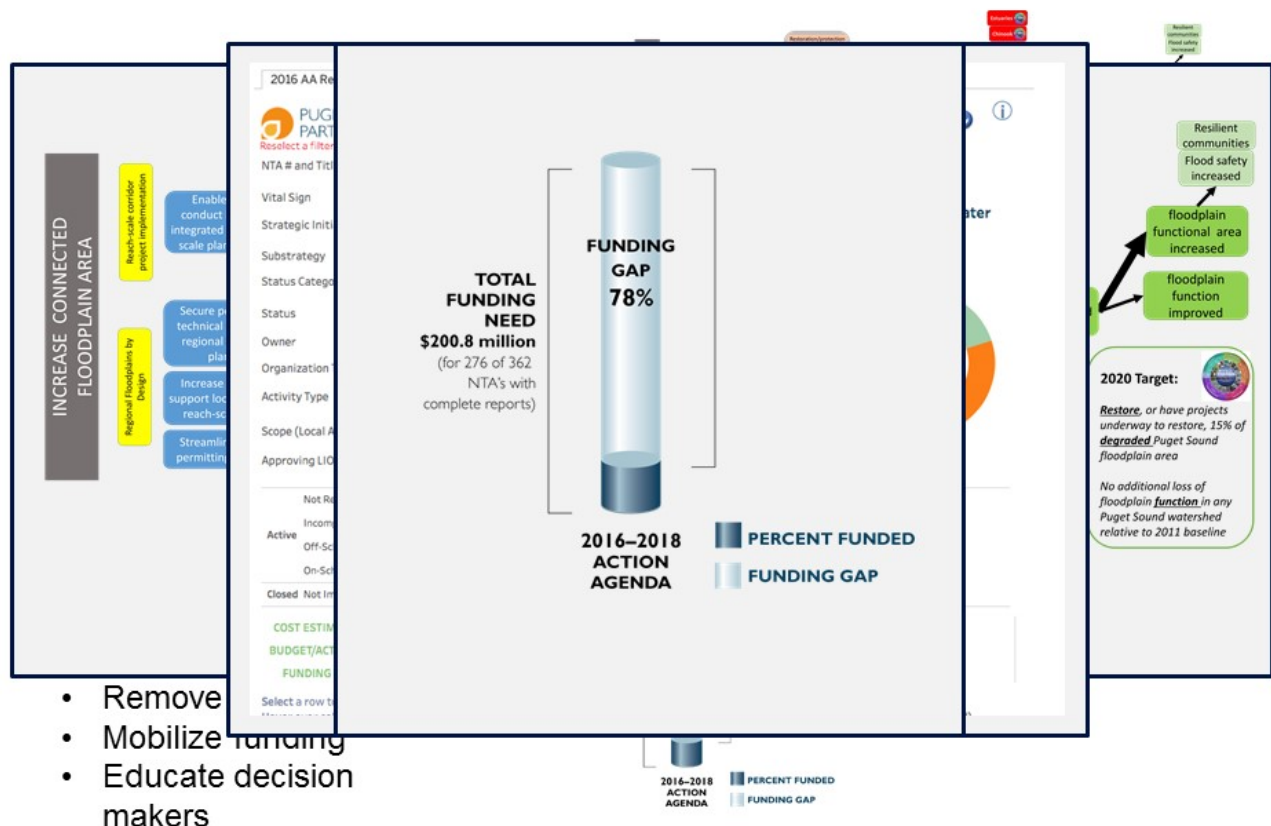
But pressures threaten to
overwhelm gains—we are not
going to meet most of the 2020
targets

Solution?

Innovation and Partnerships



3 Backbone Roles of the Partnership



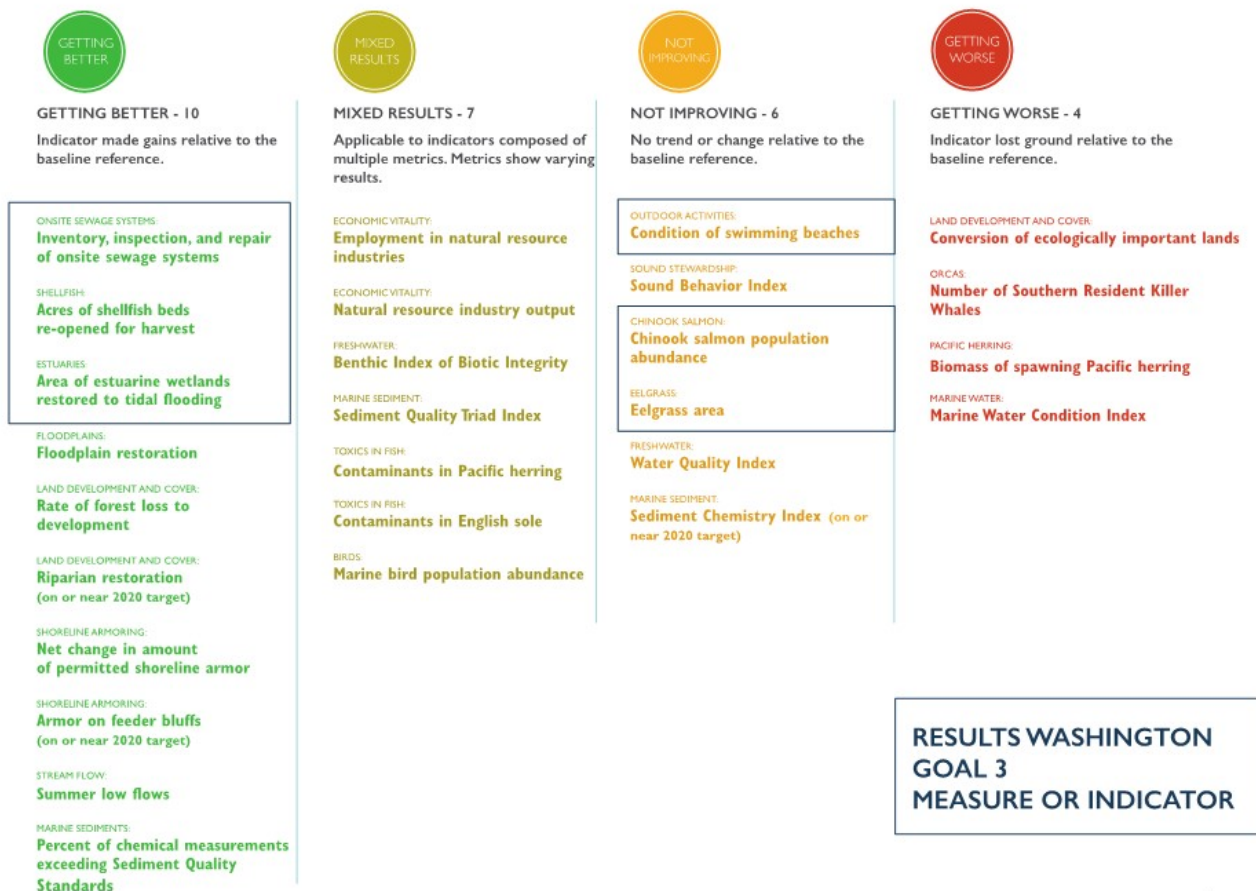
Backbone role important in VUCA world

- **Volatile**
- **Uncertain**
- **Complex**
- **Ambiguous**



- **Vision:** clear priorities for action
- **Understanding:** engaging with partners broadly for global perspective
- **Clarity:** seeing essential issues and elements in noisy systems
- **Agility:** responding quickly in changing conditions

4



5

Opportunity: Engage more of society, drive innovation



Resident SCUBA Divers
generate \$2.6M in
economic impacts



Whale Watching Generates
Economic Impacts of \$65-70M
Annually



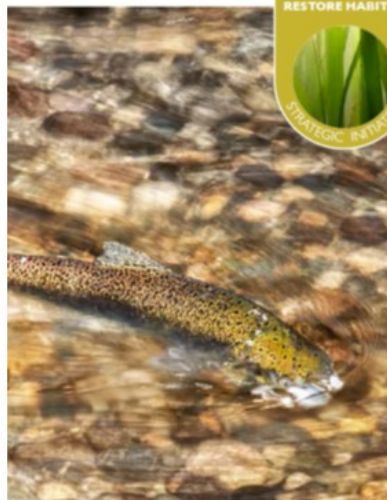
- We are coordinating state and federal agencies with local and tribal governments, non-profits
- Need to focus on public-private partnership to increase scope of effort, investments, and innovation
 - Carbon fiber pervious pavement
 - Waste converted to drinking water
 - Many more

6

Partnerships within the state family – our three Strategic Initiatives leads



PREVENT
POLLUTION FROM
STORMWATER
STRATEGIC INITIATIVE



PROTECT AND
RESTORE HABITAT
STRATEGIC INITIATIVE



PROTECT AND
RECOVER
SHELLFISH BEDS
STRATEGIC INITIATIVE



Department of Commerce
Innovation is in our nature.

7



- Strategic Initiative Lead: Dept. of Ecology
 - Vince McGowan, Lead for Municipal Stormwater Management
- Status:
 - Most stormwater-related Vital Sign measures are not changing or show mixed results
- Partnership/Innovation Example:
 - Local government, low impact development, and stormwater action monitoring

8

Habitat: Engage local processes to develop approaches for protection and restoration



- Strategic Initiative Leads: WDFW & DNR
 - Julie Watson, WDFW's Policy Lead for the Habitat Strategic Initiative
 - Kirsten Feifel, DNR's Policy Lead for the Habitat Strategic Initiative
- Status:
 - Restoration is making modest gains, but not at the pace needed to achieve targets
 - Rates of forest loss, shoreline armoring, and eelgrass coverage suggest some success in protection, but losses continue
- Partnership/Innovation Example:
 - Sea-level rise adaptation workshops
 - Zooplankton monitoring

9



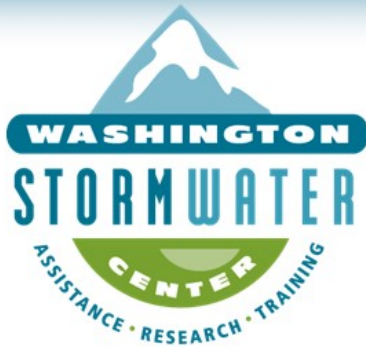
- **Strategic Initiative Lead: Dept. of Health**
 - Emily Sanford, Lead for the Shellfish Strategic Initiative
- **Status:**
 - Water quality improvements are increasing the area of harvestable shellfish beds, though successes at large growing areas will be needed to achieve target
- **Partnership/Innovation Example:**
 - Liberty Bay upgrade

10

Cross-Sector Partner Presenters

- **John Stark, WSU Puyallup and Washington Stormwater Center**
- **Mindy Roberts, Washington Environmental Council**
- **Monte Marti, Snohomish Conservation District and Puget Sound Conservation District Caucus**
- **Stephanie Solien, Leadership Council Vice Chair, Puget Sound citizen volunteer**

11



The Washington Stormwater Center was created through a state legislative mandate (R.C.W. 90.48.545) for a stormwater technical and educational resource center for all stormwater permit holders in the state

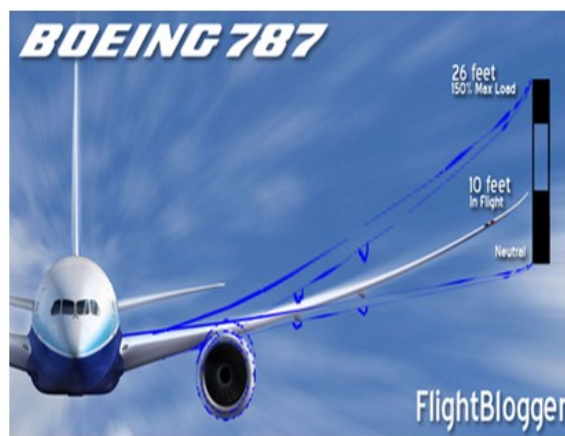
A joint center between UW-Tacoma and WSU-P developed in 2010



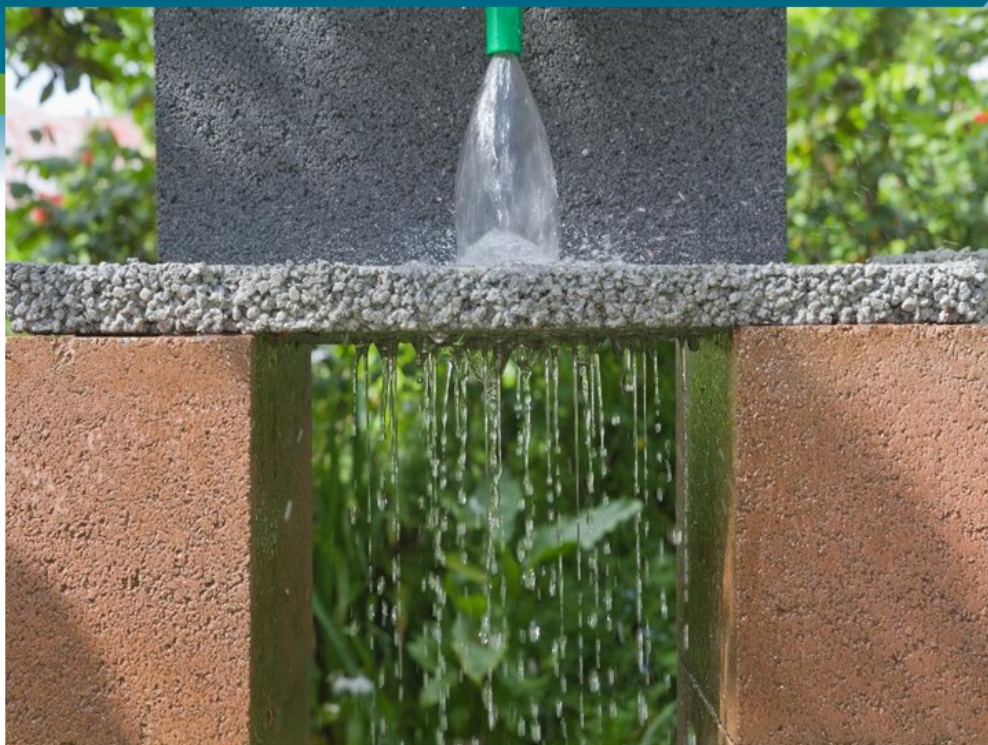
Pre-spawn mortality in Coho



Incorporating carbon fibers into permeable pavements (funded by the Boeing Company)



14



15

Permeable pavements - a great idea but there are problems

- Do not have the tensile and compressive strength of regular pavements
- Can clog over time if not maintained properly



16

- The WSU engineering team developed the process to incorporate carbon fiber into permeable asphalt and concrete
- WSU Puyallup developed the toxicity data



17



WASHINGTON
ENVIRONMENTAL
COUNCIL

WASHINGTON
CONSERVATION
VOTERS

18

Toxic Sites Cleaned Up



Tacoma Stormwater Facility



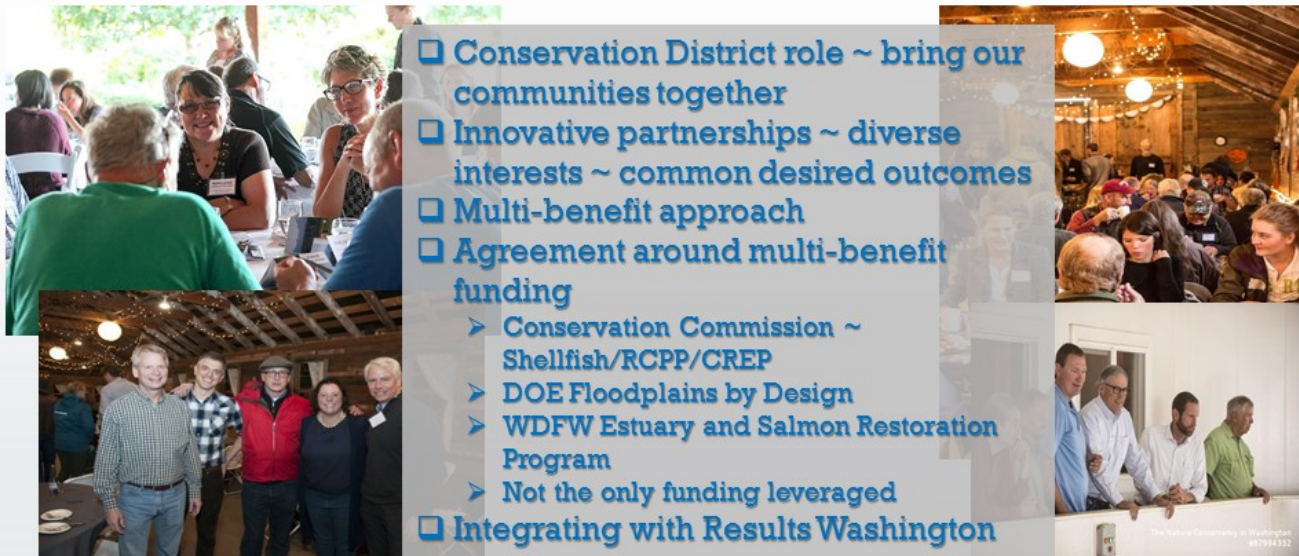


Snohomish Conservation District

Community Engagement ~ Private Landowner Participation

Monte Marti, District Manager

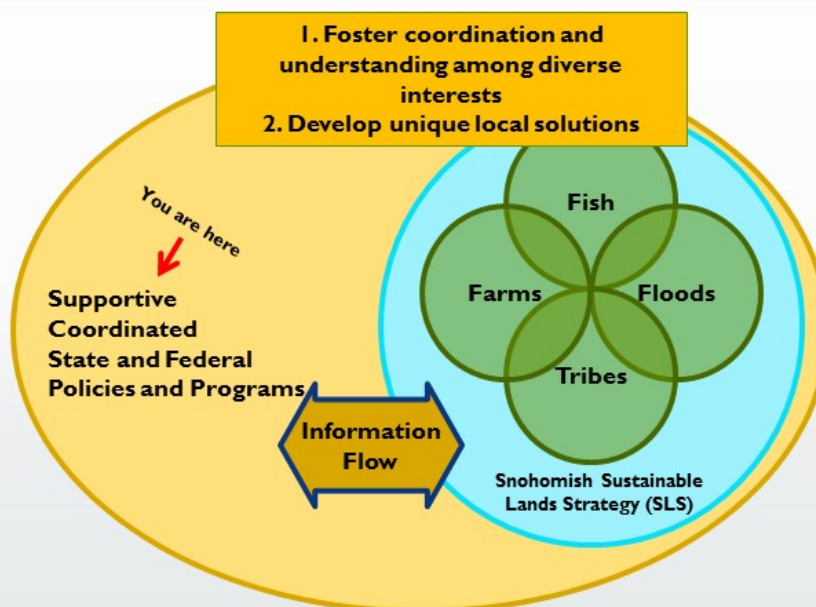
Snohomish Sustainable Lands Strategy



- ❑ Conservation District role ~ bring our communities together
- ❑ Innovative partnerships ~ diverse interests ~ common desired outcomes
- ❑ Multi-benefit approach
- ❑ Agreement around multi-benefit funding
 - Conservation Commission ~ Shellfish/RCPP/CREP
 - DOE Floodplains by Design
 - WDFW Estuary and Salmon Restoration Program
 - Not the only funding leveraged
- ❑ Integrating with Results Washington

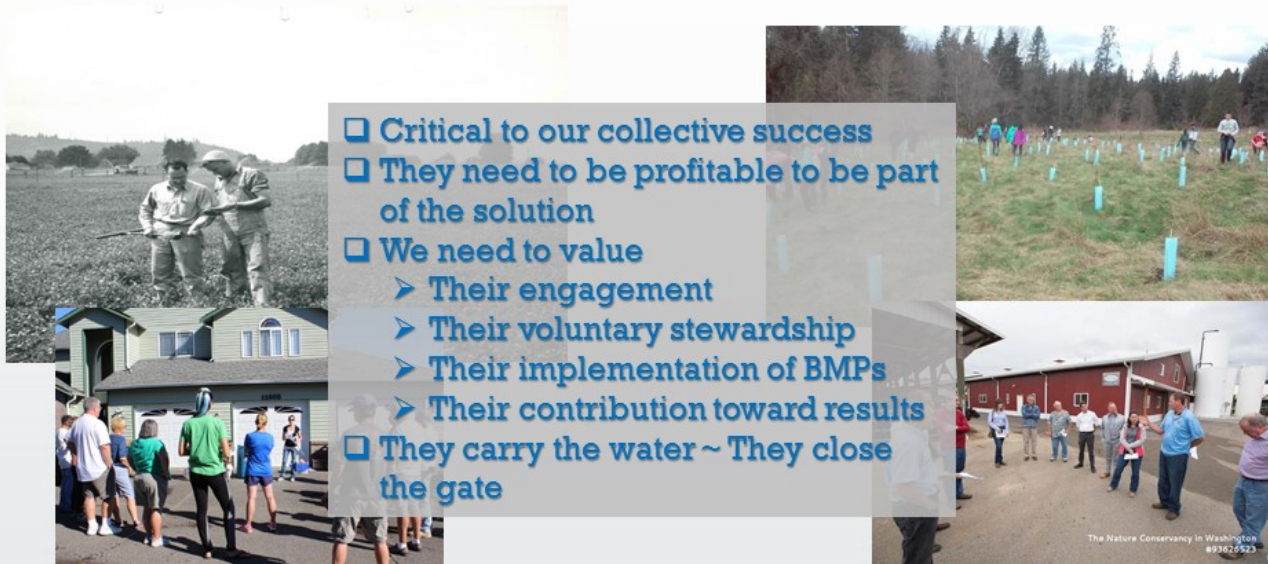
24

Innovating for the Future



25

Role of Private Landowners



26

Assistance Requests

- Innovation is critical – R&D focus to address pressures on Puget Sound.
 - Cascadia Innovation Corridor
- Partnerships are critical – Lend us your voice to bridge the gap with other sectors and across the border.
 - Establish a Salish Sea transboundary work group (State/BC)
- Science is critical and real – Affirm our dedication to science-based decision-making, including monitoring programs
 - 2018 Salish Sea Ecosystem Conference

27

Thank you!



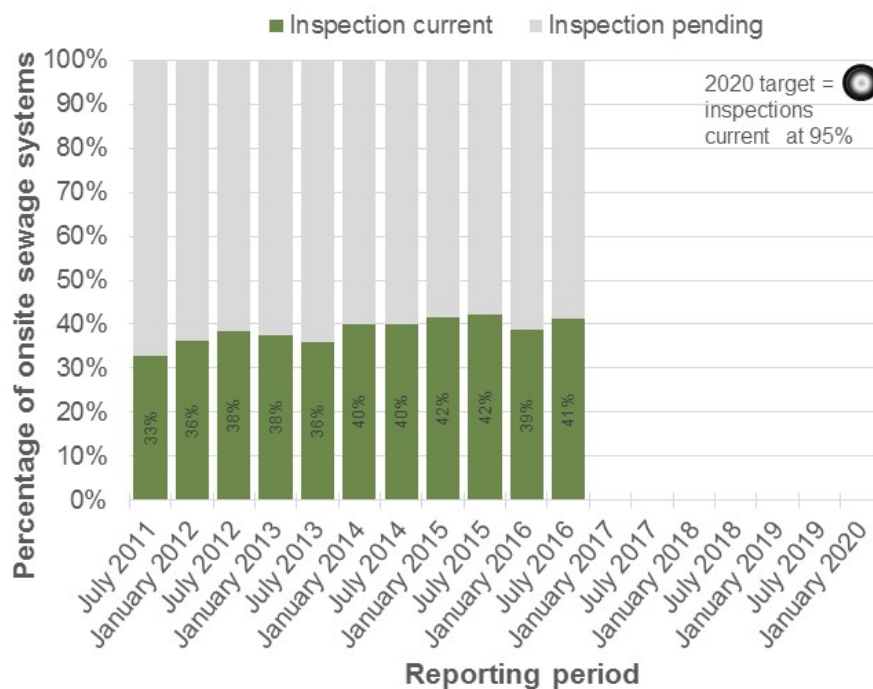
28

ONSITE SEWAGE SYSTEMS

Indicator:
Inventories, inspections and repairs

BELOW
2020
TARGET

GETTING
BETTER



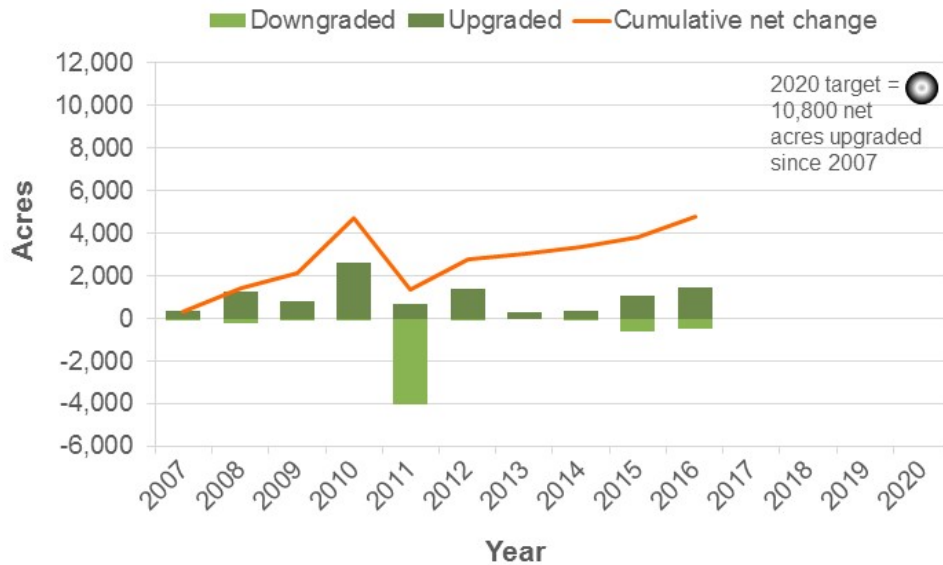
29

SHELLFISH

Indicator:
Shellfish beds re-opened to harvest

BELOW
2020
TARGET

GETTING
BETTER



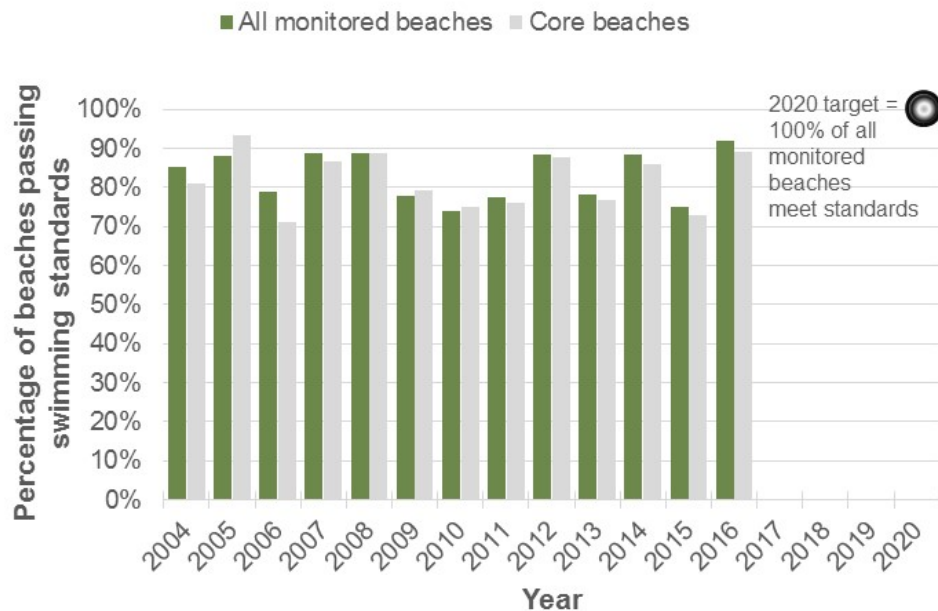
30

SWIMMING BEACHES

Indicator:
Condition of swimming beaches

BELOW
2020
TARGET

NOT
IMPROVING



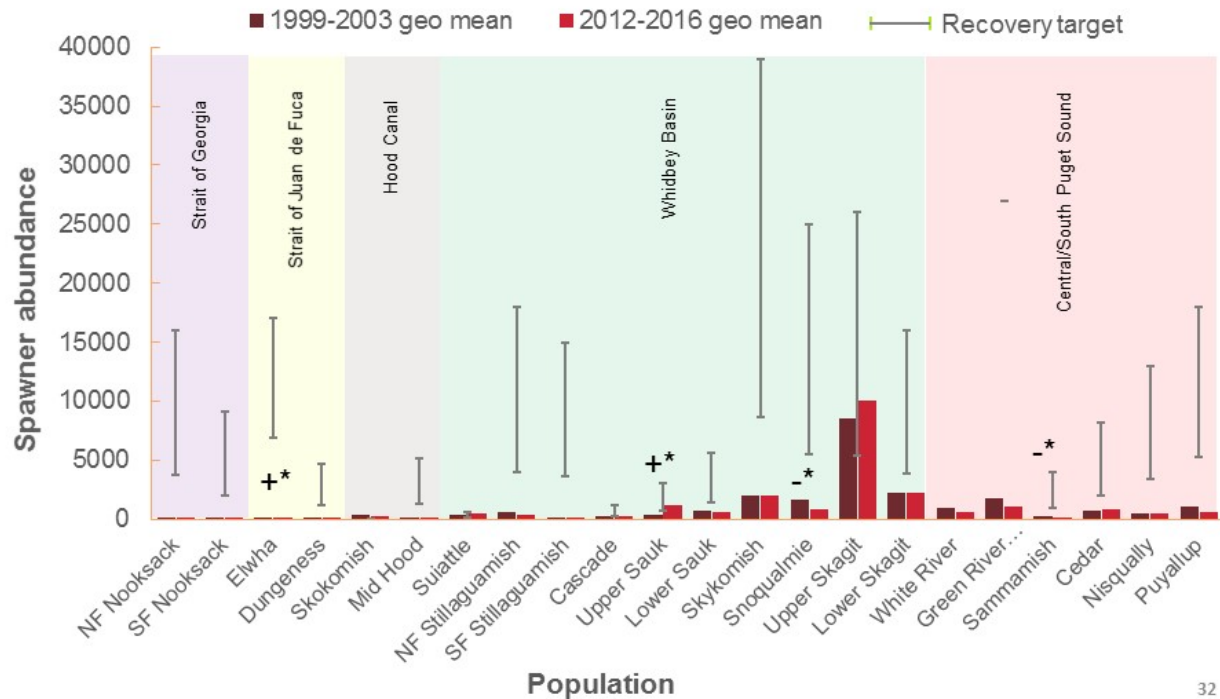
31

PUGET SOUND CHINOOK SALMON

Indicator:
Spawning population abundance

BELOW
2020
TARGET

NOT
IMPROVING



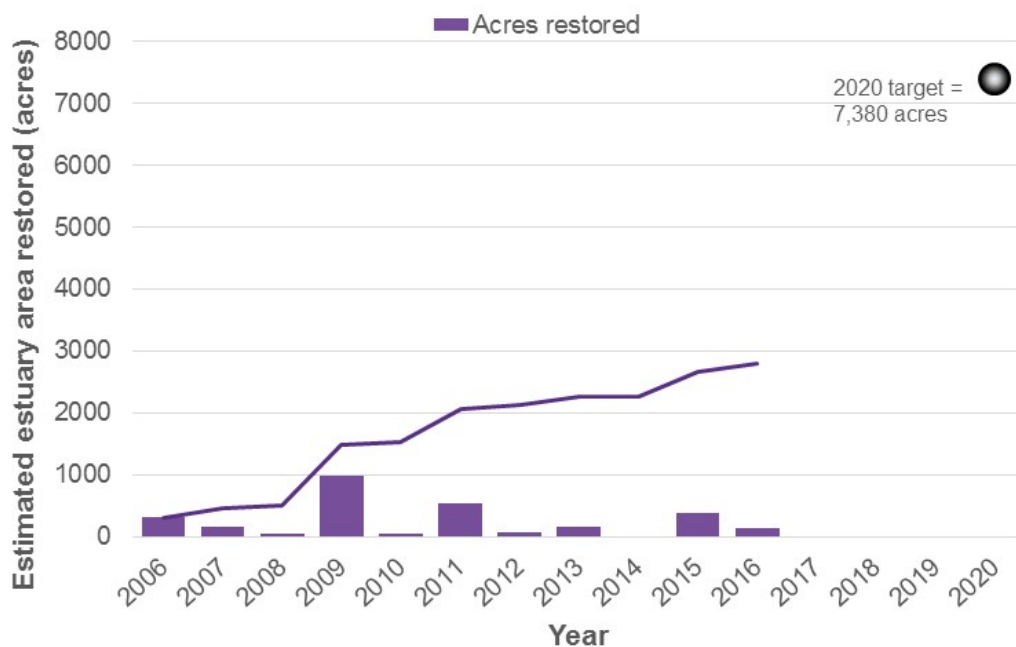
32

ESTUARIES

Indicator:
Restoration of estuarine wetlands

BELOW
2020
TARGET

GETTING
BETTER



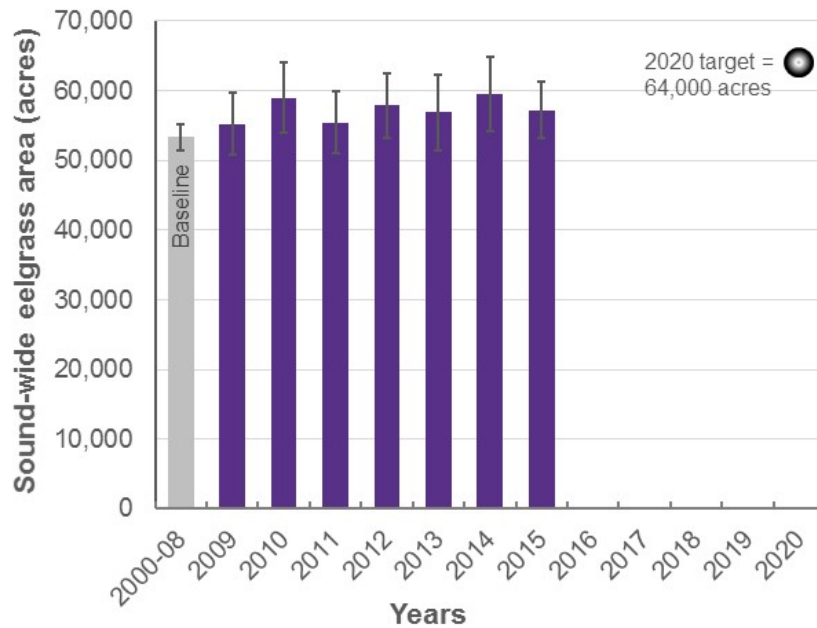
33

EELGRASS

Indicator:
Sound-wide eelgrass area

BELOW
2020
TARGET

NOT
IMPROVING



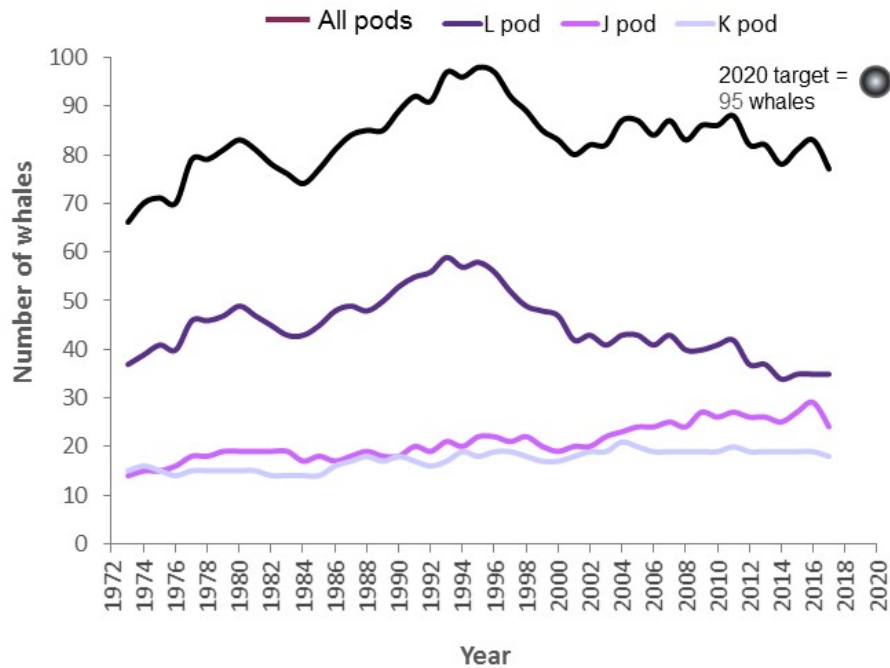
34

ORCA

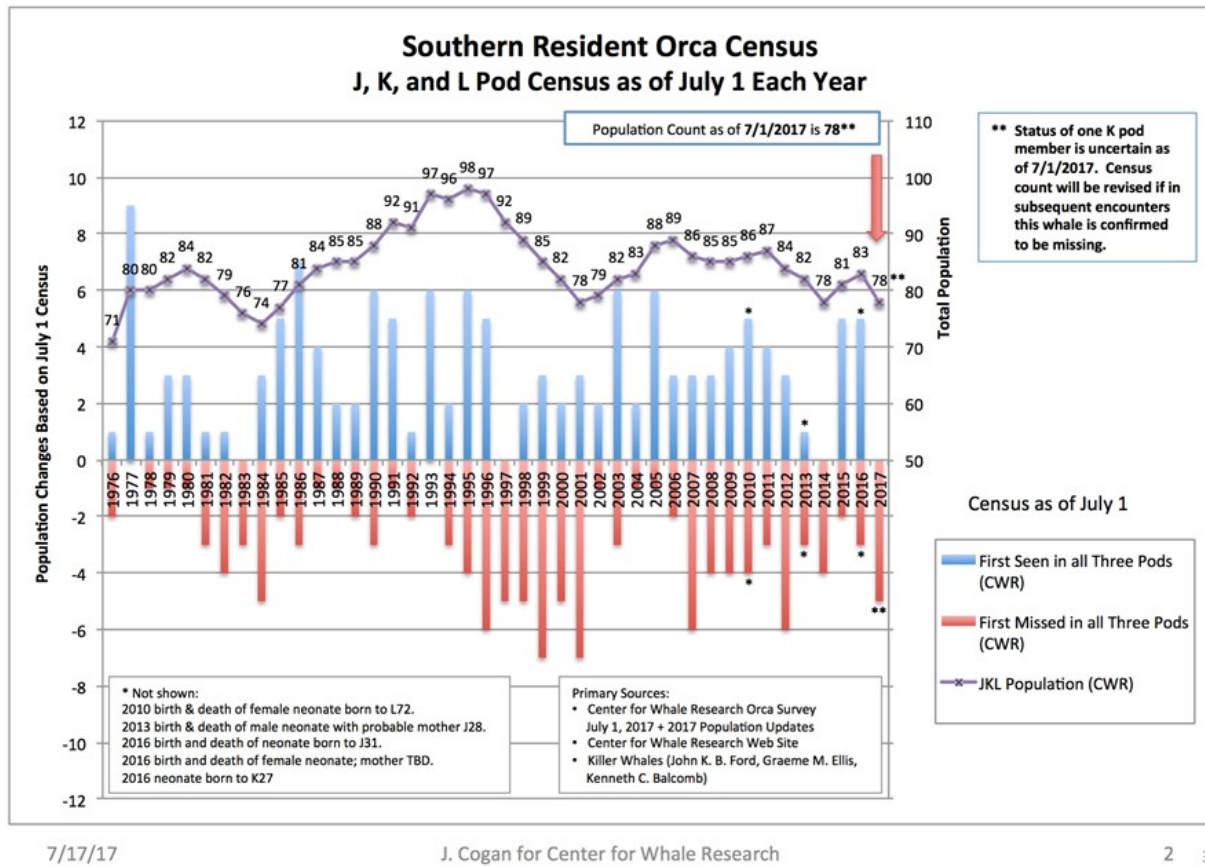
Indicator:
Number of Southern Resident killer whale

BELOW
2020
TARGET

GETTING
WORSE



35



[Contact Us](#)
[Comment Policy](#)
[Give Us Your Feedback](#)
[Legislative Reports](#)
[Apply Lean](#)

[Foster Performance Audits](#)
[Measure Results](#)
[Gov. Inslee's New Strategic Framework](#)

[Video Message from the Governor](#)
[Printable Trifold about Results Washington](#)



Powered By Socrata