



1.2.h, i: Supplemental - High School Outcomes



1.2.h: Increase percentage of high school graduates who during the 3rd quarter after graduation are either enrolled in post-secondary education or training or are employed in Washington

1.2.i: Increase the percentage of 9th graders who after 5 years are either employed in Washington or enrolled in post secondary education or training during the third quarter

Workforce Training and Education Coordinating Board

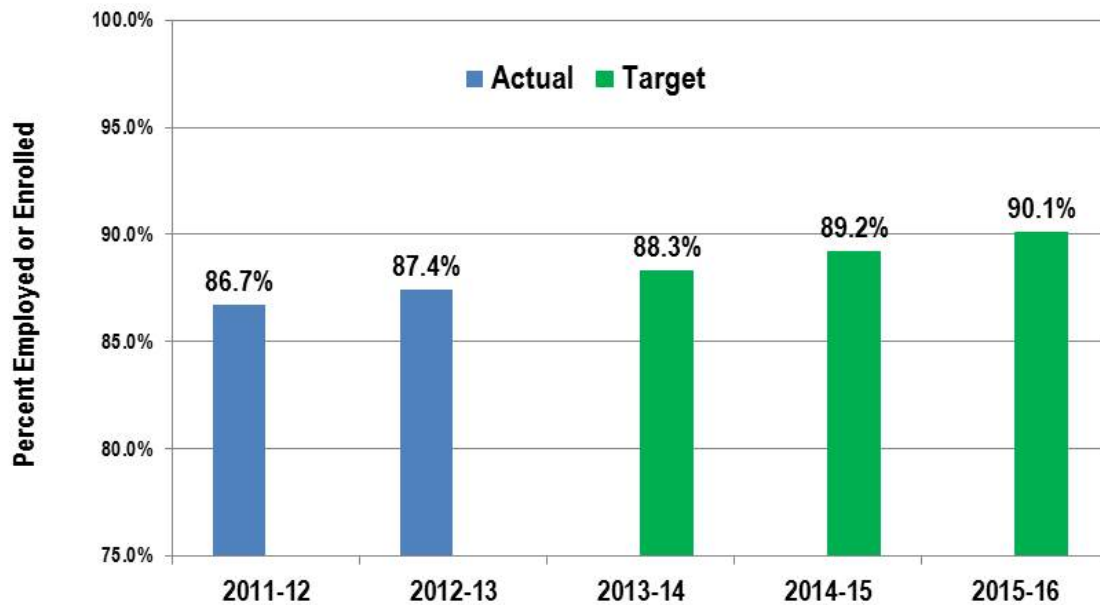
Eleni Papadakis, Executive Director

Dave Wallace, Research Manager

April 4, 2016

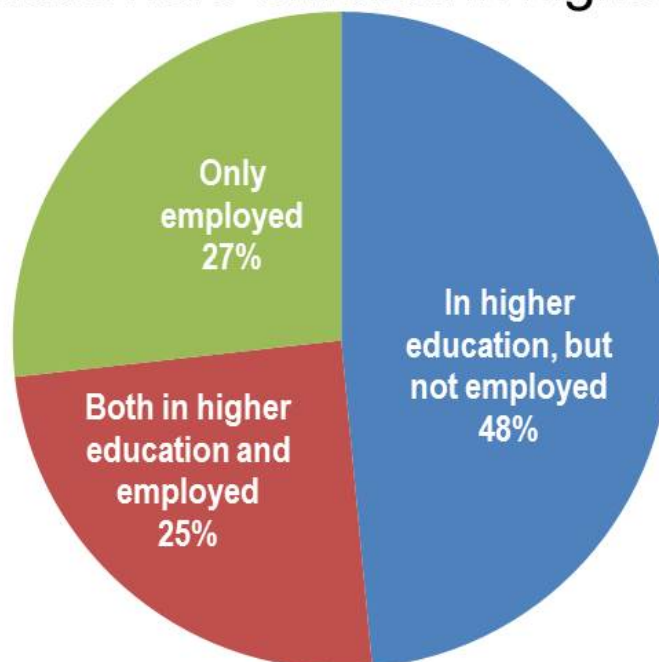


Percentage of WA high school grads enrolled in postsecondary education & training or employed



Source: Education Research and Data Center

Current state: Most of the “engaged” 2011-2012 graduating class were enrolled in higher education



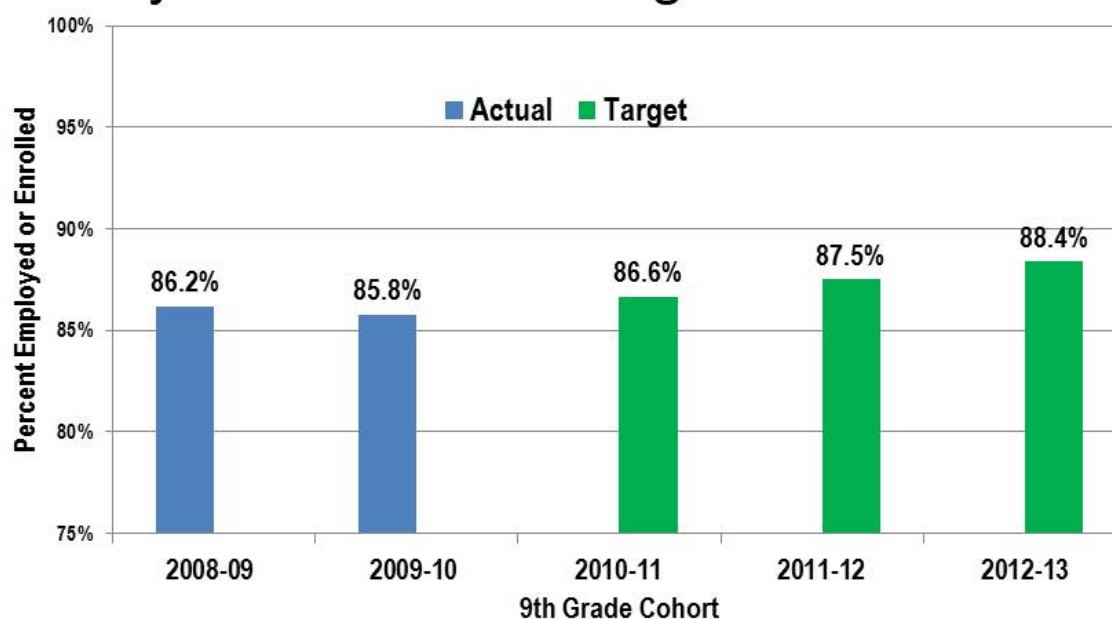
Source: Education Research and Data Center

2012-13 High School Graduates		Enrolled in Postsecondary Education or Employed in WA, January - March 2014		
Student Characteristics	Share of students in Category	Female	Male	Total
All students	100%	89%	85%	87%
Race/Ethnicity				
American Indian and Alaska Native	1%	75%	77%	76%
Asian	8%	95%	92%	94%
Black or African-American	4%	91%	86%	89%
Hispanic	15%	86%	85%	85%
Native Hawaiian or Other Pacific Islander	<1%	89%	83%	86%
Two or more races	5%	89%	86%	88%
White	65%	89%	85%	87%
Income				
Low-Income	37%	86%	82%	84%
Not Low-Income	63%	91%	87%	89%
English Language Learners	2%	85%	84%	85%
Special Education	9%	72%	73%	73%

Source: Education Research and Data Center

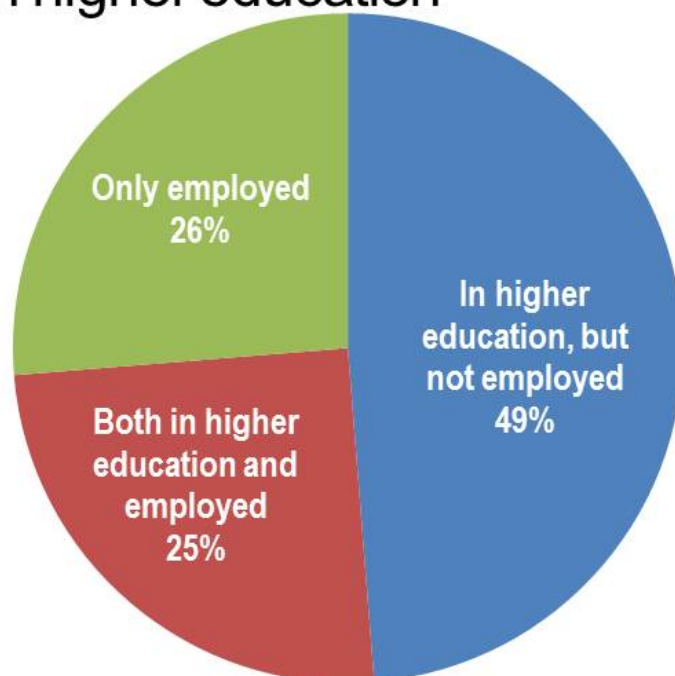
4

Percentage of 9th graders who after 5 years are either employed in Washington or enrolled in post-secondary education or training



Source: Education Research and Data Center

Most of the 2008-2009 “engaged” cohort were enrolled in higher education

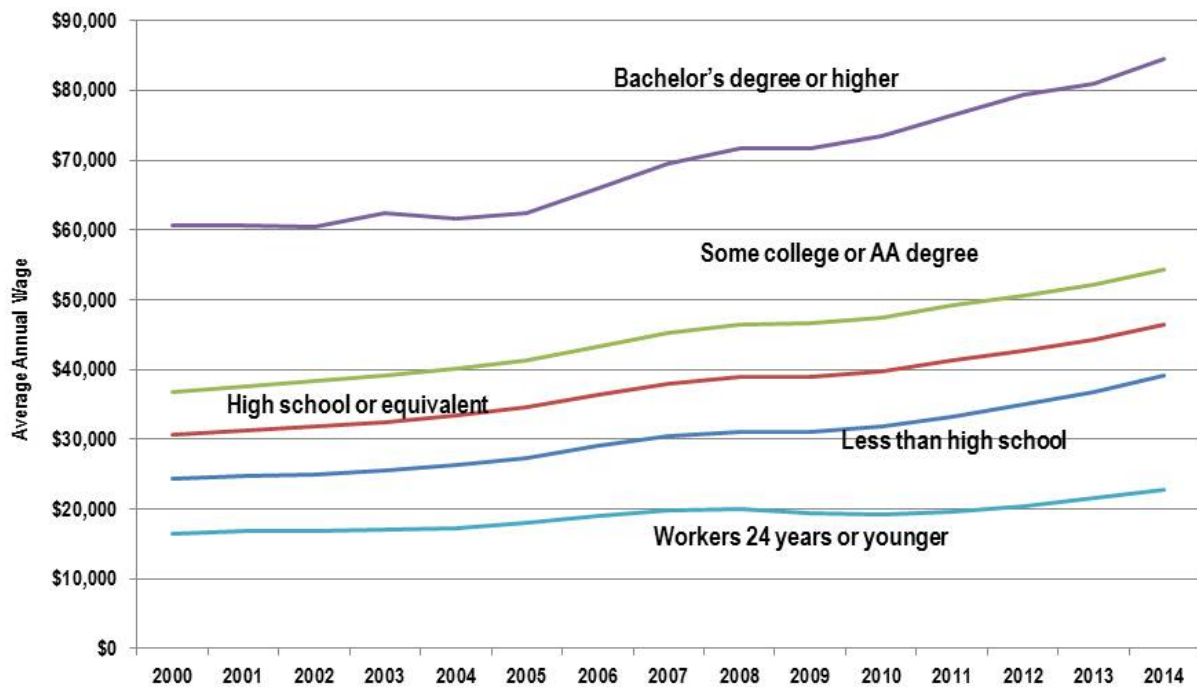


Source: Education Research and Data Center

2009-10 Ninth Graders		Enrolled in Postsecondary Education or Employed in WA, January - March 2014		
Student Characteristics	Share of students in Category	Female	Male	Total
All students	100%	88%	84%	86%
Race/Ethnicity				
American Indian and Alaska Native	2%	69%	69%	69%
Asian	7%	94%	92%	93%
Black or African-American	5%	89%	84%	87%
Hispanic	16%	84%	83%	84%
Native Hawaiian or Other Pacific Islander	1%	83%	85%	84%
Two or more races	5%	87%	84%	86%
White	64%	88%	83%	86%
Income				
Low-Income	49%	83%	78%	81%
Not Low-Income	51%	92%	87%	90%
English Language Learners	5%	83%	83%	83%
Special Education	12%	74%	71%	72%

Source: Education Research Data Center

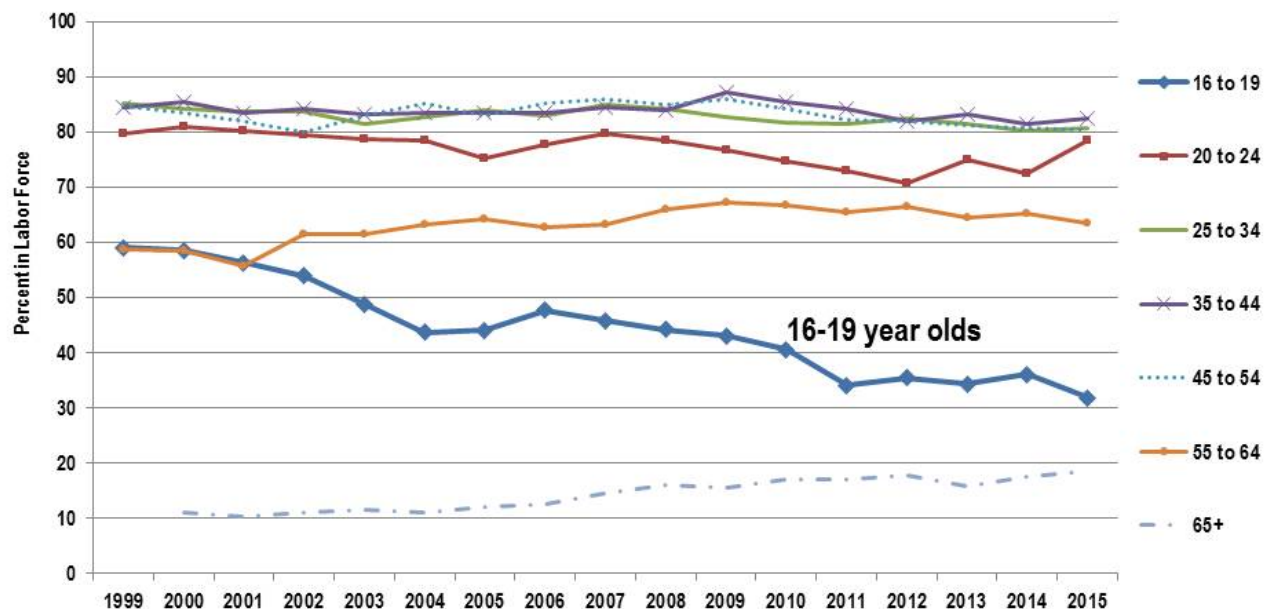
Challenges: Educations pays, being young doesn't



Source: Bureau of the Census, LEHD

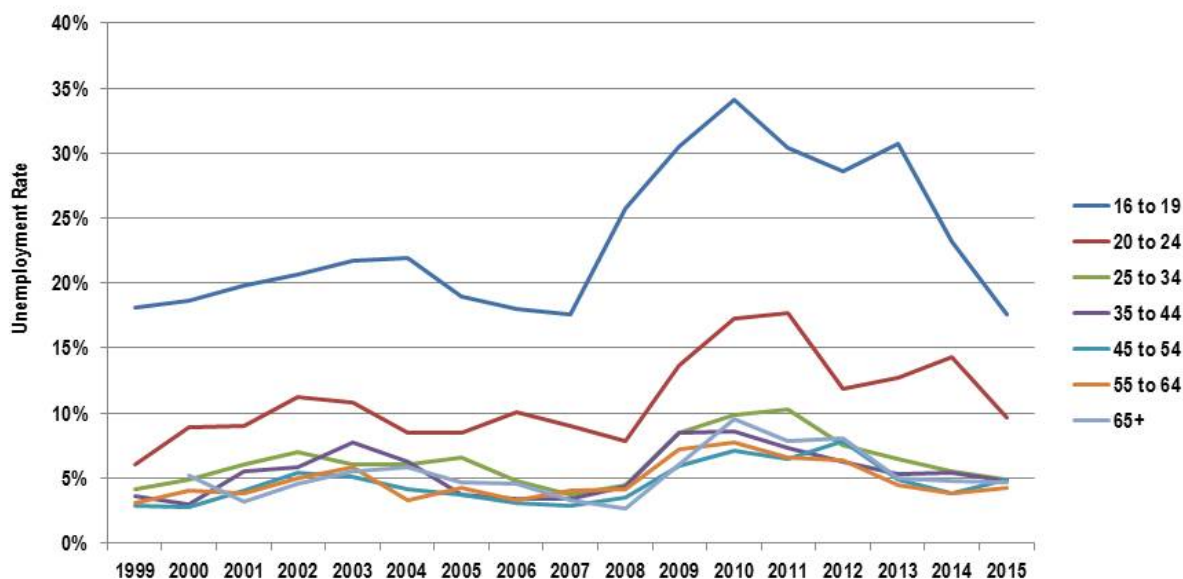
(1.2.h) Percentage of high school graduates and (1.2.i) 9th graders who after 5 years are enrolled in postsecondary education & training or employed

Labor force participation rates falling for younger workers, older workers picking up slack



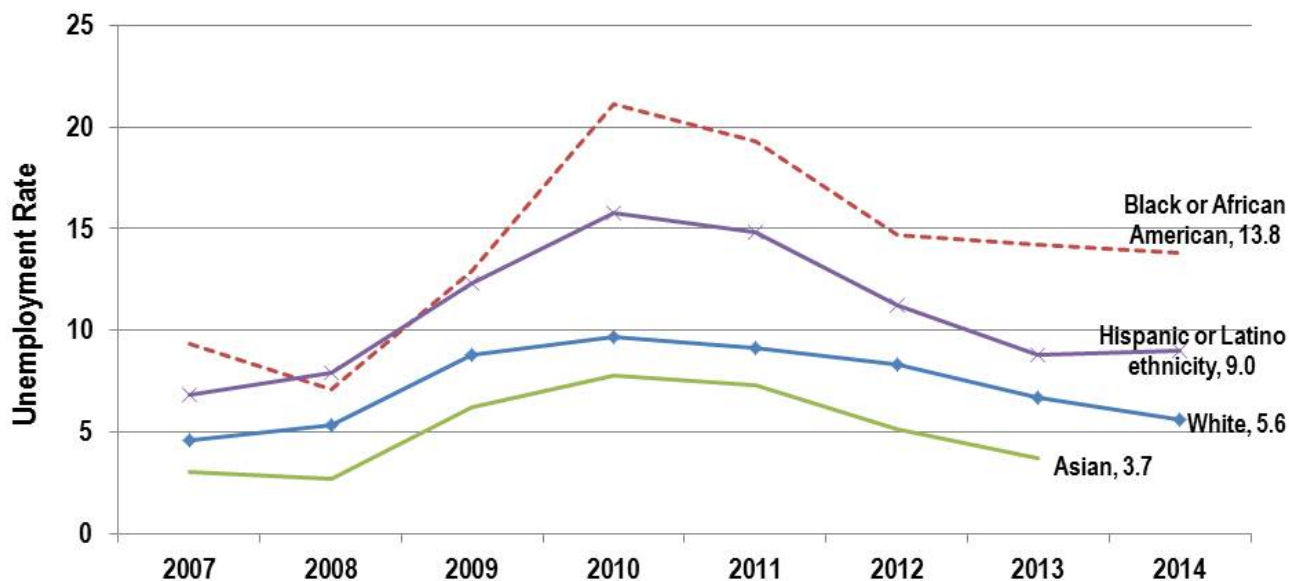
Source: U.S. Bureau of Labor Statistics

Younger cohorts had much higher unemployment rates, especially during the recession



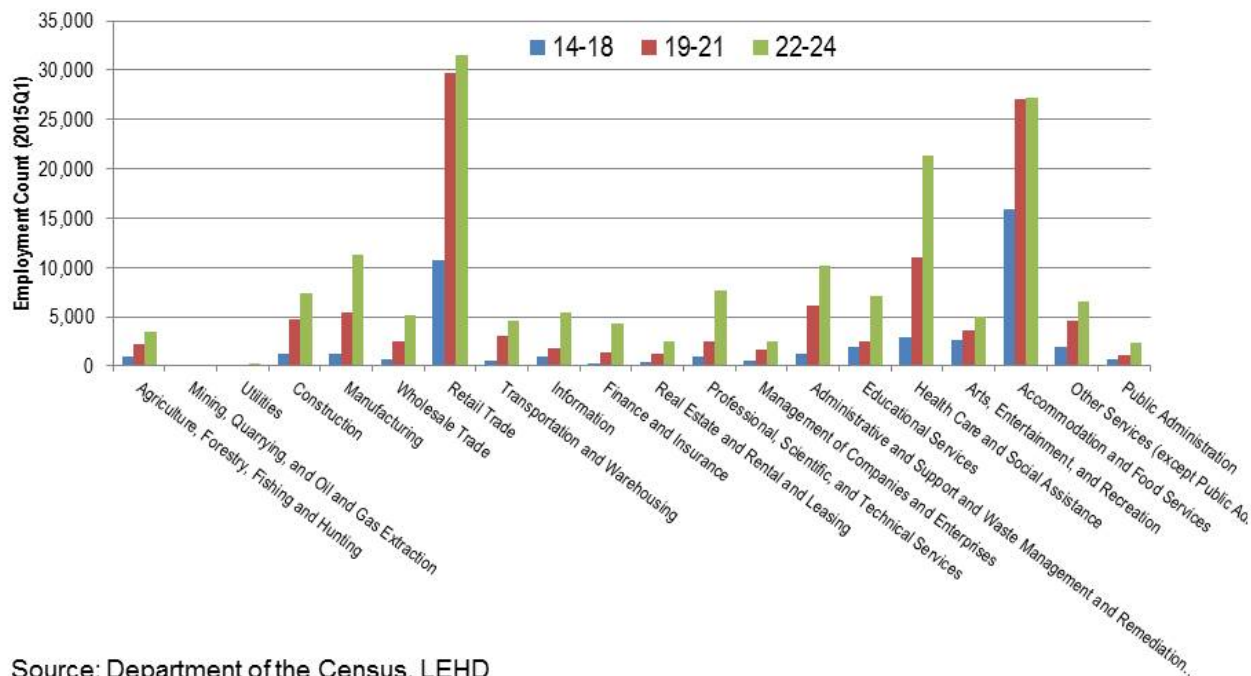
Source: U.S. Bureau of Labor Statistics

African Americans had highest unemployment rates during the recession and have recovered slowly



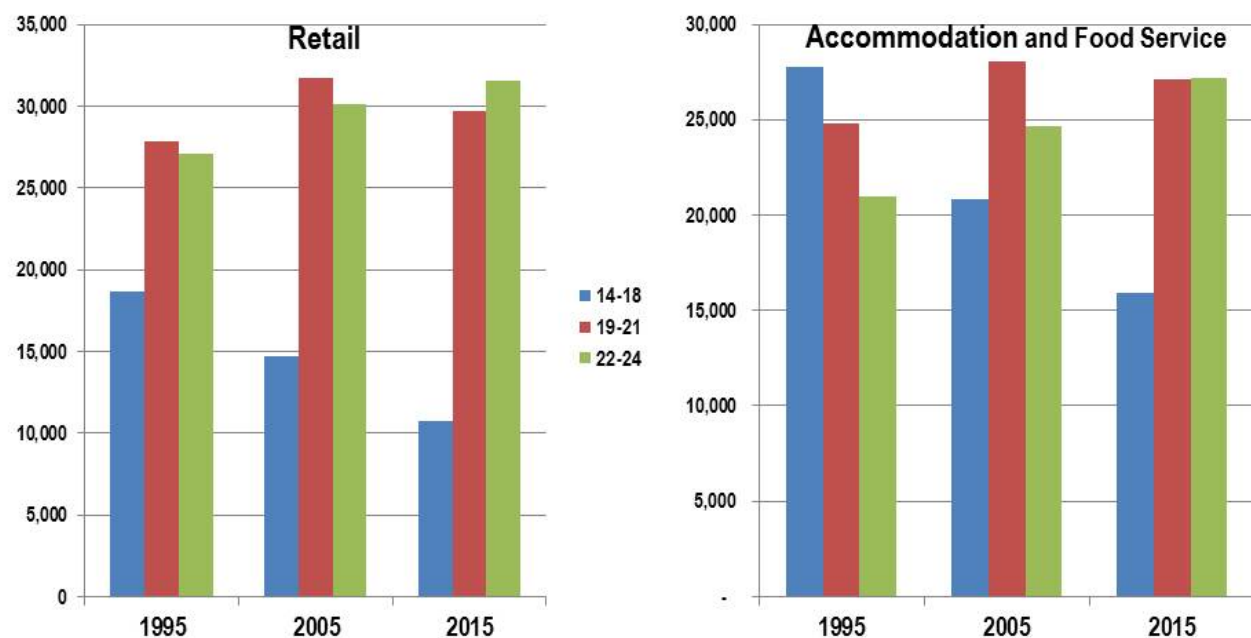
Source: U.S. Bureau of Labor Statistics

Young people tend to work in retail and accommodation / food service industries



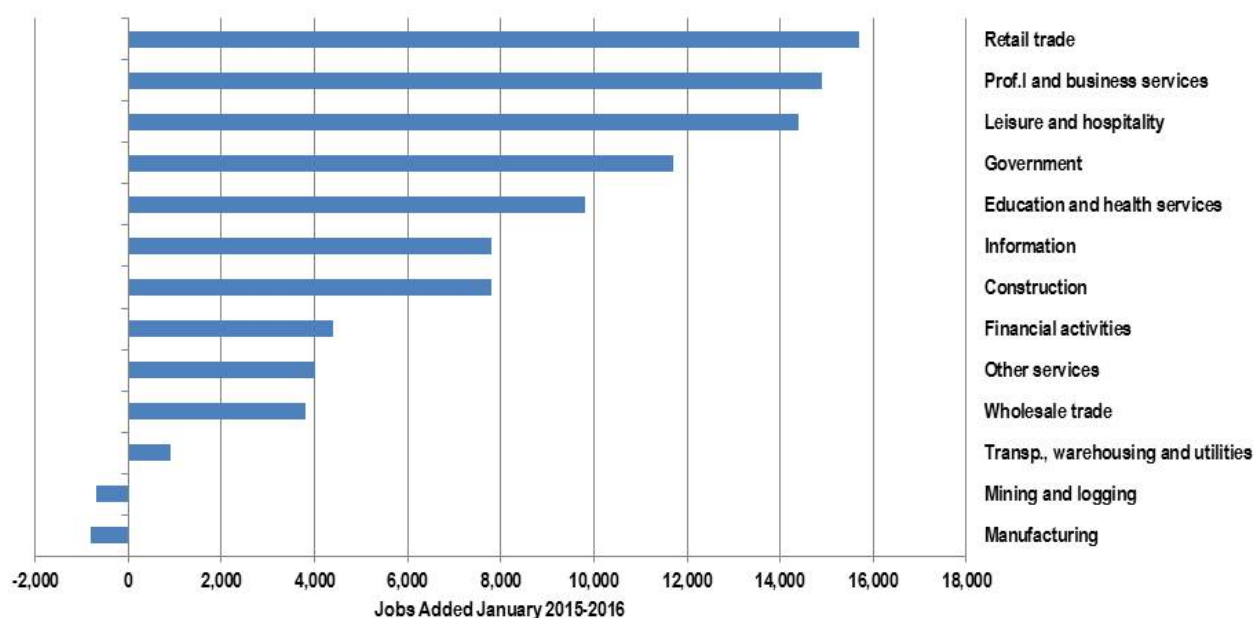
Source: Department of the Census, LEHD

The youngest workers have steadily declined in retail and accommodation/food service



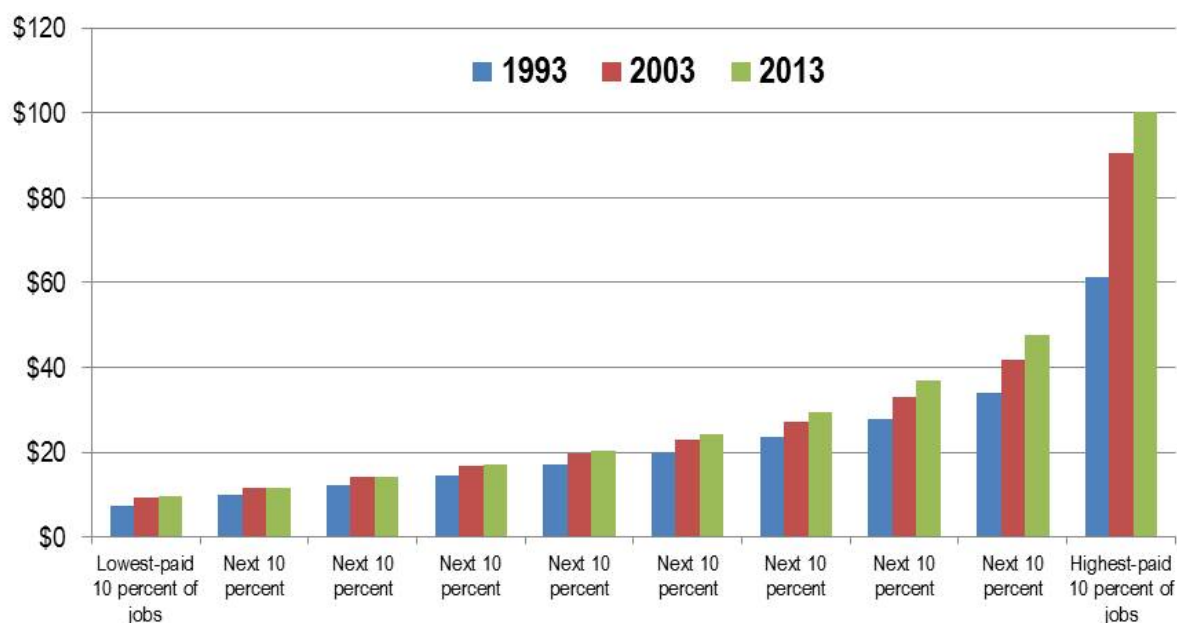
Source: Department of the Census, LEHD

Most jobs were added in retail, followed closely by the professional & business services sector



Source: Washington State Employment Security Department

Growth in hourly wages fastest at the top end, and most of it occurred 2003-2013



Source: Washington State Employment Security Department

Questions?

- Dave Wallace, Workforce Board Research Manager
(360) 709-4613 | dave.wallace@wtb.wa.gov
- Eleni Papadakis, Workforce Board Executive Director
(360) 709-4600 | eleni.papadakis@wtb.wa.gov

16

[Contact Us](#) [Comment Policy](#) [Give Us Your Feedback](#) [Legislative Reports](#) [Apply Lean](#)

[Foster Performance Audits](#) [Measure Results](#) [Gov. Inslee's New Strategic Framework](#)

[Video Message from the Governor](#) [Printable Trifold about Results Washington](#)



Powered By  Socrata