



## 1.2.a & 2.1.a: Supplemental - GBI and Employment



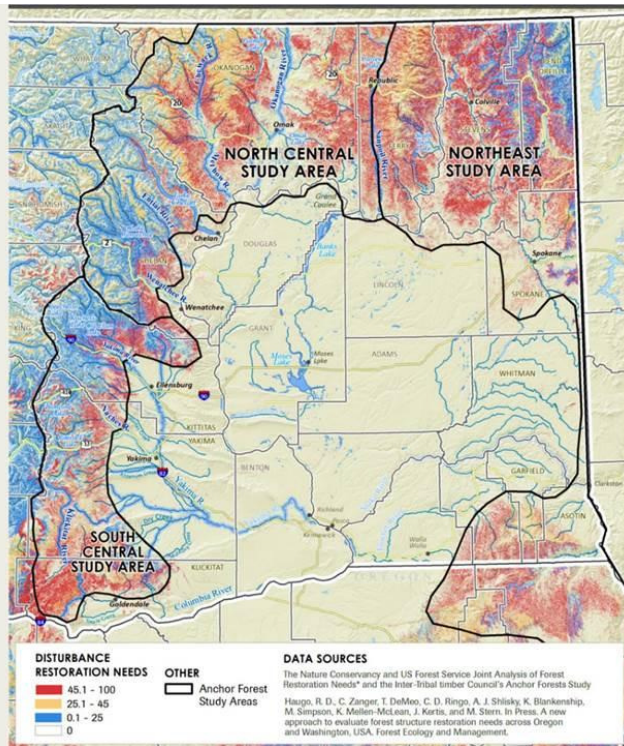
# Forest health

A changing environment and climate are putting millions of forested acres in Washington at higher risk of disease, insect infestation, and wildfire.



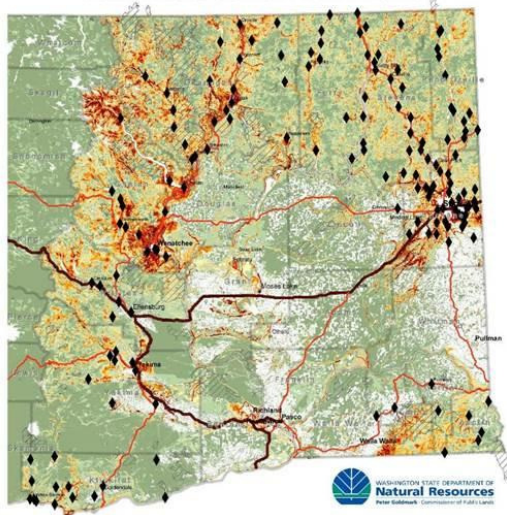
**How big is the problem?**

**2.7 million acres of landscape needs restoration**





### Eastern Washington Wildfire Risk Index and Communities at Risk From Wildfire



**How big is the problem?**

**158 communities at risk**

## Forest health restoration needs:

Thin stands to reduce tree densities and promote fire-resistant tree species.



# Goal 3 Council: Sustainable Energy & Clean Environment

## Working & Natural Lands Measure:

- Increase the average annual statewide treatment of forested lands for forest health and fire reduction from 145,000 to 200,000 acres by 2017
- Increase treatment of forested lands for forest health and fire reduction from 22,000 acres to 23,500 acres of DNR-administered treatments

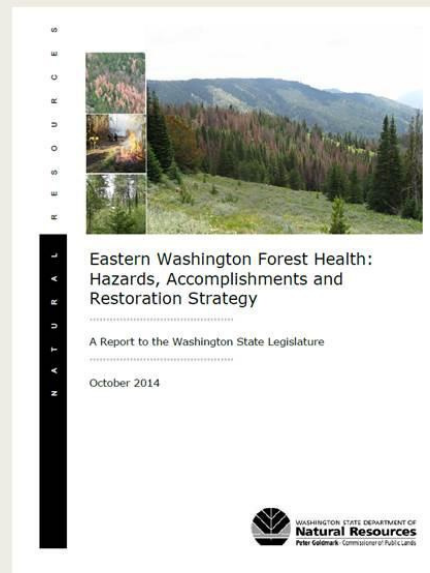
## Improvement Project:

How do we develop a forest restoration economy?

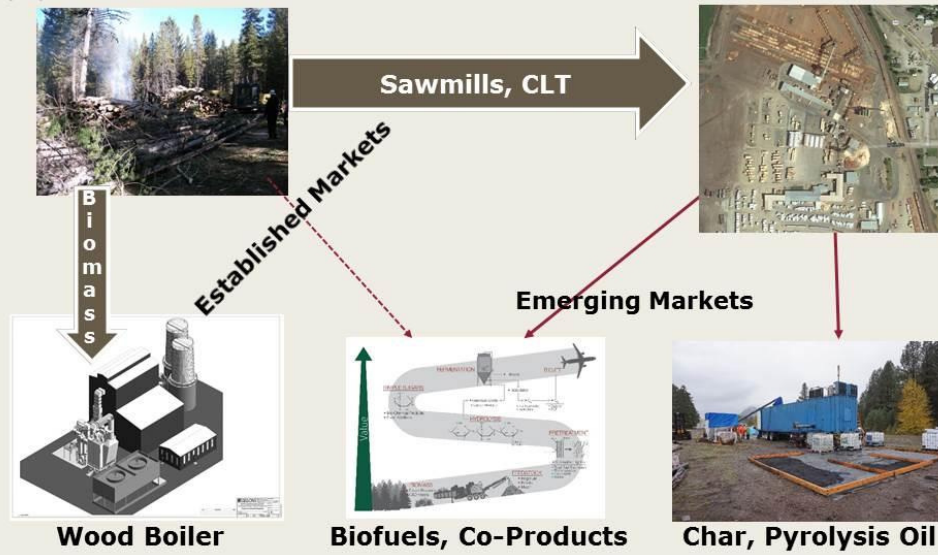
## DNR Report to the Legislature

### Eastern Washington Forest Restoration Strategy

- **Strategy 1:** Increase the pace and scale of forest restoration
- **Strategy 2:** Strengthen collaborative processes that engage all forest landowners and stakeholders
- **Strategy 3:** Promote Fire Adapted Communities
- **Strategy 4:** Increase workforce capacity and expertise for forest restoration
- **Strategy 5:** Strengthen existing and create new markets for small diameter wood

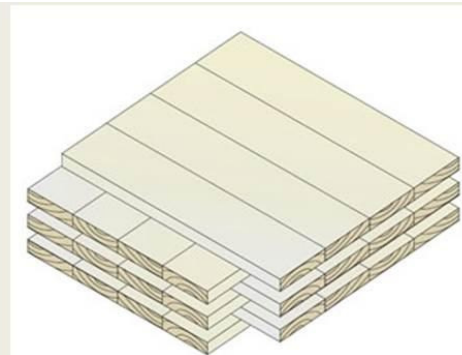
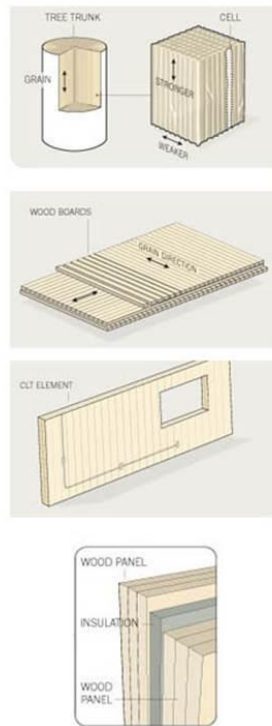


# We need more markets for small-diameter trees!





- Cross-laminated timber (CLT) is a form of “mass timber” advanced wood product.
- Mass timber products are factory-produced, structural wood panels of two inches or greater thickness and typical widths of four feet or more.
- Cross laminated timber is a large-scale, prefabricated, solid engineered wood panel.
- Finished panels are typically between 2 and 10 feet wide, with lengths up to 60 feet and thickness up to 20 inches.
- It is sometimes used as an alternative to conventional materials like concrete, masonry, or steel, especially in multifamily and commercial construction, and as long spans in walls, floors, and roofs.







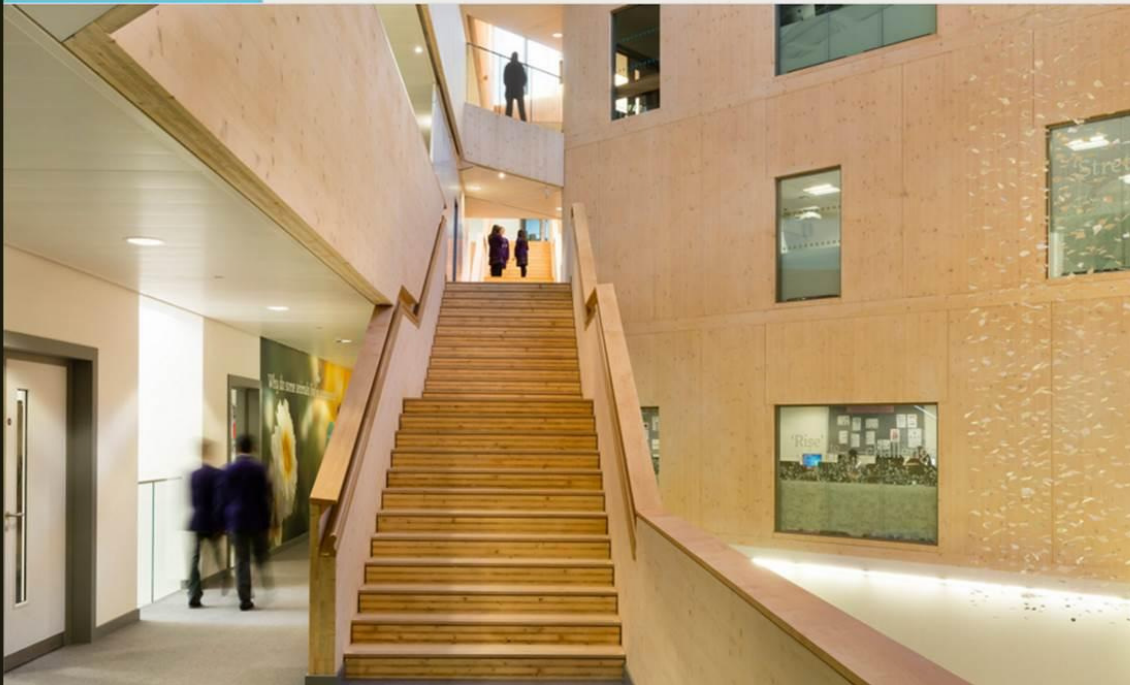


The UK's largest timber building - William Perkin High School in Greenford, West London





The UK's largest timber building - William Perkin High School in Greenford, West London



**Michael Green**  
Architect

■ [https://www.ted.com/speakers/michael\\_green](https://www.ted.com/speakers/michael_green)

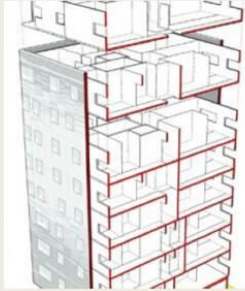




## Andrew Waugh Architect



- Projects: <http://www.waughthistleton.com/projects/>
- The world's tallest modern timber residential building: Stadthaus - Murray Grove, London
- 4/21 UW HUB 332 10:30am-12:00pm



## Current Efforts Underway to Establish a CLT Market:

- **Forterra:** Central Facilitator
  - October 2015 CLT Conference & Follow-up; Facilitates diverse stakeholder steering committee; Applied for USFS grant to implement next steps from '15 CLT Conference
- **Legislative:** Supplemental Capital Budget
  - Sec. 1021: CLT Pilot Project:
    - \$75,000 grant to WSU College of Engineering & Architecture to prepare a review and summary of available engineering test results to inform building code amendments
    - \$50,000 grant to Commerce/associate development org. to assist prospective CLT manufacturers in evaluating the potential CLT market
  - Sec. 1022: K-3 Modular Classrooms
    - To reduce K-3 class sizes in the following districts: (a) Seattle; (b) Mount Vernon; (c) Sequim; (d) Wapato; and (e) Toppenish
    - Intended to be a model for classrooms to use mass timber products, including CLT
- **Administrative:** DNR; Commerce; Results WA; DES; USFS Federal Grants/Tall Wood Competition



## Other Legislative efforts that didn't pass

- **UTC Building Demonstration Project** in (2016) Capital Budget
- **HB 2857 (Blake/Harris):** Concerning tax incentives that will promote the manufacturing and use of sustainable wood materials.
  - *Exempts the portion of gross receipts derived from the wholesale, retail, or manufacture of cross-laminated timber (CLT) from the business and occupation tax, in the form of a deduction.*
  - *Exempts certain qualifying construction containing CLT as a major design component from the sales and use tax, in the form of a remittance*

[Contact Us](#)

[Comment Policy](#)

[Give Us Your Feedback](#)

[Legislative Reports](#)

[Apply Lean](#)

[Foster Performance Audits](#)

[Measure Results](#)

[Gov. Inslee's New Strategic Framework](#)

[Video Message from the Governor](#)

[Printable Trifold about Results Washington](#)



Powered By 