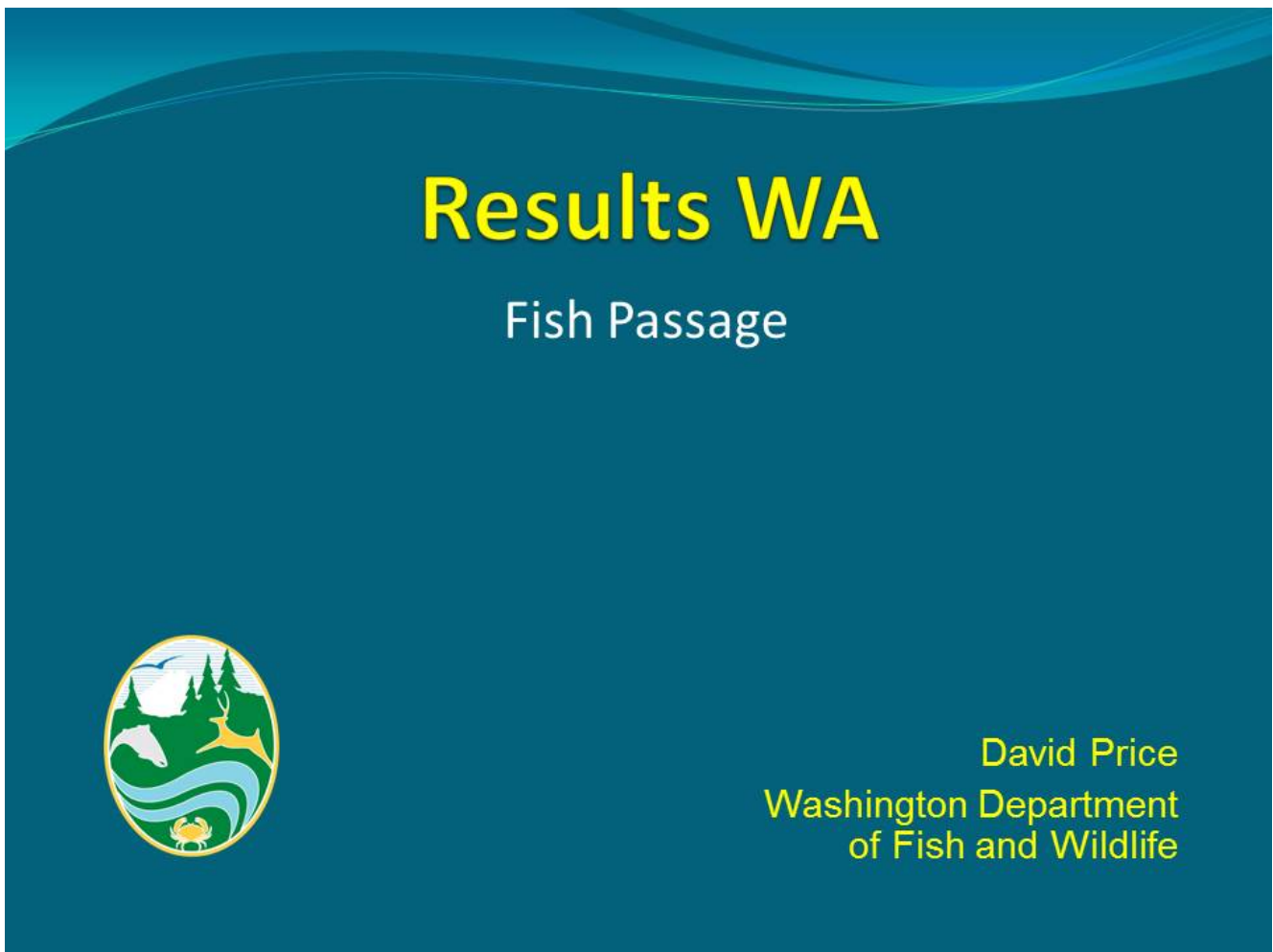




## 2.2.c.: Supplemental - Increase number of fish passage barriers corrected per year from 375 to 500 by 2016

Reported: December 2015



## Fish Passage - Goals

- Goal 2.2.c: Increase number of fish passage barriers corrected from 375 per year to 500 per year by 2016
- Goal 2.2.b: Increase miles of stream habitat opened from 350 miles per year to 450 miles per year by 2016

## Fish Passage – Data Explained

- Goals were established as the mean of both metrics (2000 – 2006)
- Performance measured 2007 and beyond
- Data are derived from WDFW and WDNR data systems
- Data are consistent and reliable and generally represent conservative estimates

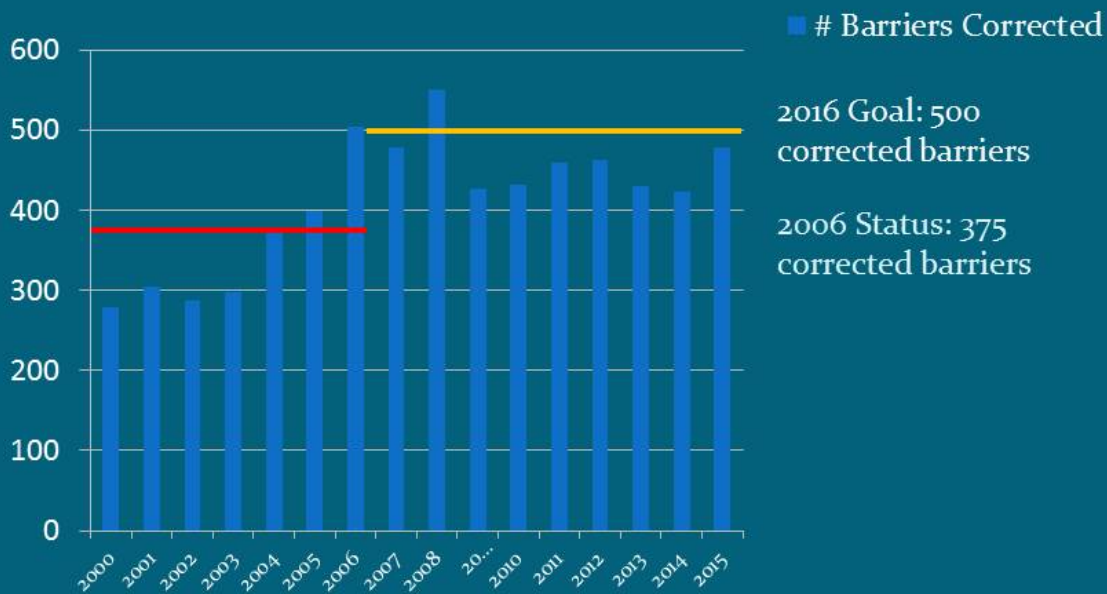
# Stream Miles Opened



December 21, 2015

4

# Fish Passage Barriers Corrected



December 21, 2015

5

# Fish Passage – Goal Status

- Barriers corrected – Goal not on track
  - 460 barriers corrected/yr over last 9 years (goal = 500)
  - Exceeded 2016 goal 1 year out of 9
  - Flat trend \*\*
- Stream habitat opened – Goal not on track
  - 411 miles opened/yr over last 9 years (goal = 450)
  - Exceeded 2016 goal 4 years out of 9
  - Uncertain trend

# Fish Passage – Future trends

- Road Maintenance program ends next year – should result in a drop in both barriers corrected and stream miles opened
- Fish Barrier Removal Board begins implementation in 2017 – should result in an increase in both barriers corrected and stream miles opened



# Fish Passage – It's the Fish



[Contact Us](#)

[Comment Policy](#)

[Give Us Your Feedback](#)

[Legislative Reports](#)

[Apply Lean](#)

[Foster Performance Audits](#)

[Measure Results](#)

[Gov. Inslee's New Strategic Framework](#)

[Video Message from the Governor](#)

[Printable Trifold about Results Washington](#)



Powered By  Seqrata