

This Socrata-powered site may be unavailable for routine maintenance from Saturday, July 21, 2018 5:00 PM PDT to Saturday, July 21, 2018 6:00 PM PDT .



## 4.4 and 4.4.b: Supplemental - Increase oak woodland and riparian habitat



# HABITAT PROTECTION

---

**WA Dept. of Fish & Wildlife**

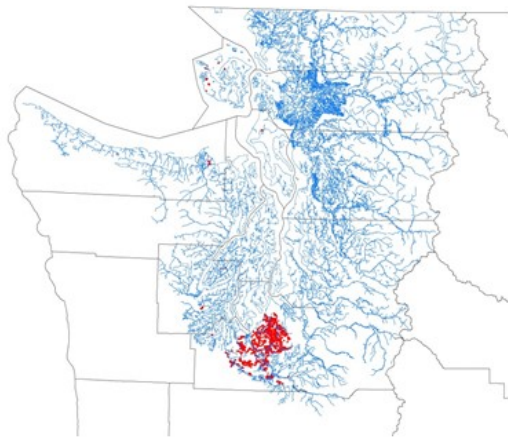
**Kenneth B. Pierce PhD**

**Timothy Quinn PhD**

**Oct 10, 2016**



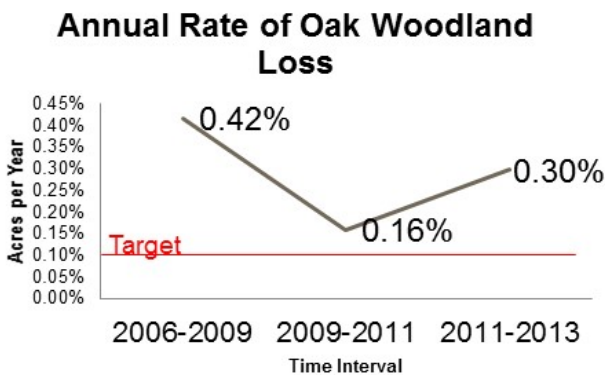
## Background:



Shore and Riparian habitat   
White oak woodland

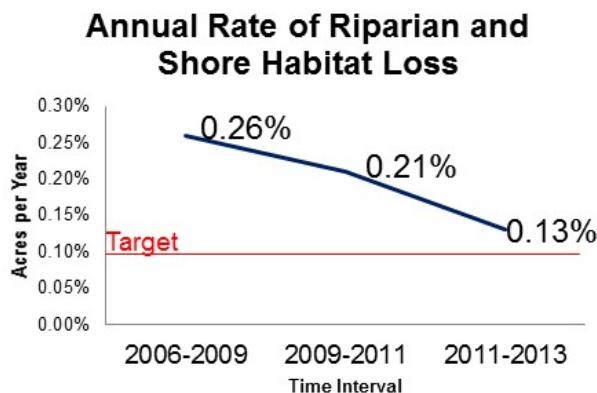
- WDFW's PHS program identifies important habitats and species to protect
- PHS information is used by local jurisdictions to develop Critical Area Ordinances (CAOs)
- CAOs, as part of the Growth Management Act, are the primary methods for conserving valuable habitat in areas other than forests

## Current State:



- WDFW measures land cover change throughout Puget Sound
- This indicator measures loss of White Oak woodland habitat
- The rate of change increased away from the target in the 2011-2013 time interval.

## Current State:



- WDFW measures land cover change throughout Puget Sound
- This indicator measures canopy loss on lands within 100' of a fish bearing stream or marine shoreline
- This indicator has continued to fall and is approaching the target.

## Problem/Opportunity:

- **Moving away from target.** Oak woodlands are a relatively rare system, mostly in private ownership. Single change events can have a large effect on year to year rates.
- **Moving towards target.** Riparian and Marine Shorelines are broadly distributed and have a primary place among CAOs and an increasingly large public awareness of their importance.
- This update is the last fully-funded assessment for these metrics. The 2013-2015 update has 50% funding provided by the Puget Sound Partnership.

[Contact Us](#)[Comment Policy](#)[Give Us Your Feedback](#)[Legislative Reports](#)[Apply Lean](#)[Foster Performance Audits](#)[Measure Results](#)[Gov. Inslee's New Strategic Framework](#)[Video Message from the Governor](#)[Printable Trifold about Results Washington](#)Powered By 